

the City Connection

VOL. 1, NO. 2

CITY OF ROSEBURG NEWSLETTER

ROSEBURG TRANSPORTATION SYSTEM PLAN MOVES FORWARD



for the city limits as well as the greater Roseburg area. Future street needs for motor vehicle traffic will be a major component, but specific planning to promote bicycle, pedestrian and transit travel will also be considered.

TSP's are required by the State Transportation Planning Rule to establish a prioritized, financially feasible plan for transportation improvements which accommodate future travel

A TSP (Transportation System Plan) is a 20-year plan for the City's transportation network. This Plan will examine all modes of transportation

demand on the roadway system and enhance the viability of non-motorized travel.

Roseburg community residents will find various forms of transportation that are relevant to their daily lives through much of the planning effort. Plan implementation may involve changes to the Land Use and Development Ordinance and Comprehensive Plan, engineering standards and alternative street designs. When adopted, the TSP will become the overall plan on which Roseburg's future street system development will be based.

The TSP will analyze the City's future travel demand based on growth estimated to occur by 2020. The location and type of land use will be used to estimate future traffic increases. The TSP project will identify alternative transportation improvements, evaluate and prioritize improvements, estimate improvement costs and identify potential funding mechanisms. Public workshops and additional newsletters will be used to keep the public updated on the study's progress and provide additional opportunity for ideas and feedback.

The City has contracted with Parametrix, Inc. to complete the bulk of the technical work for the TSP. Expectations are that the Plan will be completed by the end of October 1999. You may contact the City's consultant through e-mail at hroll@parametrix.com or Dan Huff in the Community Development Department at 440-1177 for a continued opportunity to comment throughout the study period.



DOWNTOWN ROSEBURG MASTER PLAN

Implementation



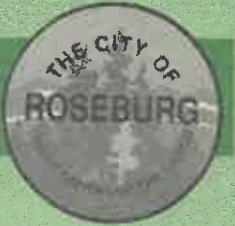
In the summer of 1998, Urban Design Studio was selected to conduct a Downtown Roseburg Master Plan. After a series of individual interviews, "person on the street" interviews and public forums, the citizens' and business owners/operators' ideas were incorporated into a Plan which includes design guidelines, development standards and a capital improvement plan, i.e. streetscapes, street lights, etc., for Downtown Roseburg.

The Downtown Development Board is currently prioritizing operational needs and the capital improvement program. The Planning Commission is in the process of establishing a new "Central Business District" land use designation which will incorporate the new standards. It is anticipated the City Council will adopt the Plan this summer.

Streetscape demonstration projects, which may include street lights, benches, trash cans, are planned for the coming year, as well as the return of Rose Street to two-way traffic. We will also be working with the Oregon Department of Transportation to incorporate signal and intersection changes on Stephens Street to allow for better access into the downtown area for car and foot traffic.

COME VISIT DOWNTOWN!

What's Inside



To The Roseburg Citizens:

The summer days are upon us, and I hope you are enjoying the warm weather and the many outdoor activities that the summer brings. As you can see, it is time to distribute another newsletter to inform you of what's happening within the City of Roseburg. We hope you find the newsletter informative as well as useful.

Many projects and activities are in progress or are currently being planned. A few of the major ones are listed in this newsletter. The City Staff and the City Council always welcome your suggestions, comments and concerns. Please feel free to call City Hall between the hours of 8:00 a.m. and 5:00 p.m. at 672-7701

Throughout the year we have many opportunities for citizens to get involved with their government. We have a number of commissions and subcommittees where your input and service would be greatly appreciated. Check at the City Hall, third floor, for openings

Our City Council meetings are the 2nd and 4th Mondays of each month starting at 7:00 p.m. We always have time for public input during the meetings and appreciate any comments you may have. If you cannot attend a meeting, feel free to call one of our City Councilors or myself. Your suggestions and comments are valuable.

Once again, enjoy the newsletter and have a great summer.

Larry Rich, Mayor

2. VIPs
3. Memorial & Y2K
4. Parks
5. Improvements
6. Fire Department
7. Ordinances & Resolutions
8. City Meeting Calendar

VOLUNTEERS IN POLICE SERVICE

The City received a federal grant which allowed the Police Department the opportunity to create a volunteer program comprised of retired and/or senior citizens. That program became "Volunteers in Police Service" (VIPS).

Crime prevention funds were used for the initial set up which amounted to special shoulder patches, breast patches, shirts, name tags, hats and magnetic door signs for marking vehicles by the volunteers. Member recruitment was done in conjunction the Retired Senior Volunteer Program (RSVP) which also provided a grant for foul weather jackets.

VIPS members are responsible for a number of activities which include distributing stolen property lists to local businesses, conducting Vacation House Checks, administering our B Home Program and developing the Police Assuring Senior Security Program (PASS). The PASS program provides limited in-home visits with shut in senior citizens to check their physical welfare, home security and general safety. If the shut-in is found to have a particular need, the volunteer makes a referral call to the appropriate social service agency. The PASS volunteers will also conduct a home security survey to determine any safety needs at the residence.

Since the program's inception, duties have been expanded to include foot patrols of Downtown Roseburg and the two shopping malls, handicapped parking enforcement, crowd and traffic control at major events such as Music on the Half Shell and Graffiti Night celebration, and department courier services. VIPS may have also been seen operating the radar reader board at various locations around Roseburg.

The VIPS Program and the City of Roseburg have been honored by the League of Oregon Cities for their innovation and service to the community and recognized in a number of publications including the "Oregon Police Chief" and Pennsylvania Police Chief magazines. The program has been looked to as a model for a number of other organizations in Oregon and states as far away as Ohio.



NUISANCE COMPLAINTS

Last December the City Council reinstated a full time position for a Compliance Officer in the Community Development Department. The Compliance Officer's job is to enforce certain areas of the Roseburg Municipal Code such as nuisances. Examples of nuisances are obnoxious vegetation, unattended or abandoned refrigerators or other containers accessible to children, posting and placement of signs without required permits, inoperative, wrecked, dismantled or abandoned vehicles, etc.

When a nuisance complaint is received, the Officer investigates the complaint. If a violation is found, the property receives a formal posting with a copy of the violation section. The property owner has ten days to remove the nuisance. Failure to do so results in a warning letter. If no further action is taken to remove the nuisance, the property owner and/or tenant are cited into Municipal Court.

Other duties of the Compliance Officer include working with groups for neighborhood clean-ups, assisting City departments in removing obstructions from the public way and abating derelict buildings.

You can contact the Compliance Officer in the Community Development Department on the third floor of City Hall or by calling 440-1175.

MAYOR AND CITY COUNCIL



Larry Rich, Mayor

**Councilor Ward I
Verna Ward**

**Councilor Ward I
Phil Gale**

**Councilor Ward II
Tom Ryan**

**Councilor Ward II
Paul Sykes**

**Councilor Ward III
Dan Hern**

**Councilor Ward III
Bob Free**

**Councilor Ward IV
Russ Shilling**

**Councilor Ward IV
Shirley Neal**

- Ward I: Voting Precincts 38, 39, 40
- Ward II: Voting Precincts 36, 37
- Ward III: Voting Precincts 44, 45, 46, 47, 47A
- Ward IV: Voting Precincts 41, 42, 43

CITY STAFF

Located at 900 SE Douglas unless otherwise noted
Web Page: <http://www.rosenet.net/~roseburg>
Email Address: roseburg@rosenet.net

City Manager Randy Wetmore		672-7701 ext 2
City Recorder Sheila Cox		672-7701 ext 2
Community Development Director Dan Huff		440-1177
Building Division		440-1175
Inspection Line		440-9616
Planning Division		440-1177
Zoning Line		440-1176
Finance Director Lance Colley		672-7701 ext 2
Fire Chief Ford Swauger	774 SE Rose	673-4459
Emergency		9-1-1
Parks and Golf Director Jim Dowd		672-7701 ext 2
Stewart Park Caretaker		673-8387
Stewart Park Golf Course		672-4592
Tennis Court Facility		673-3429
Personnel Director Barbara Gershon		672-7701 ext 2
24-Hour Jobline		440-1199
Police Chief Chris Brown	205 SE Jackson	673-6633
Emergency		9-1-1
Police Officer (Non-Emergency)		440-4471
Web Page	http://www.sorcom.com/~cops/	
Public Works Director Chris Berquist		672-7701 ext 2
Airport (Adventure Aviation)		673-5706
Utility Director Dick Hutton		672-7701 ext 2
After Hours Emergency		673-0397



The City of Roseburg would like to congratulate the General Marion Carl Memorial Committee on their extremely successful dedication ceremony. On June 12, 1999, the General Marion Carl Memorial was revealed to the public and dedicated in memory of the lost war hero. The dedication ceremony was the culmination of many hours of hard work by the General Marion Carl Memorial Committee, led by Chairman Jim Barnett. The committee successfully raised all of the funding and donation of time and materials necessary to make the memorial a reality. The memorial is located near the entrance to the Roseburg Regional Airport and is a beautiful addition to the airport grounds. If you have not seen the memorial, stop by and check it out. It really is something special!

General Marion Carl Memorial



In early 1998, City Staff began reviewing possible Year 2000 computer problem impacts on City services. Since that time suppliers have been contacted, computer applications have been tested, and equipment with imbedded chips have been investigated to assure that service can continue to be provided with minimal or no interruption.

If Y2K affected the production and distribution of electricity, the City services the public would notice most are the operation of street and traffic lights, the City's water treatment plant and eleven water-pumping stations. If the City is without power to operate the water system, the water available in reservoirs throughout the City will be sufficient for approximately three days.

In March of 1999, a representative of Pacific Power and Light made a presentation to the City Council regarding their efforts to assure that electric power will be available. Then and now, it appears that PP&L is on schedule to meet their goal of providing electrical power.

The City will continue to monitor this issue and take appropriate action to ensure all systems are in compliance. Some Internet sites with further information on this topic include:

<http://y2k.das.state.or.us>
www.sba.gov/y2k
www.cassandraproject.org/
www.frsb.org/fiservices/cdc/bulletins.html
headlines.yahoo.com/Full_Coverage/Tech/Year_2000_Problem

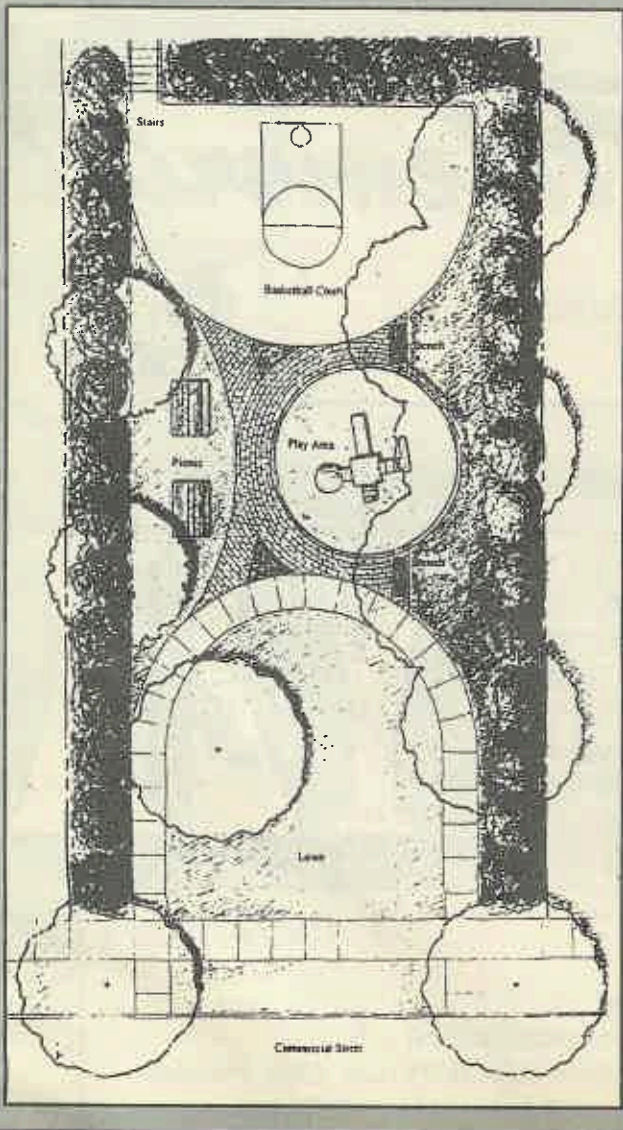
Y2K

COMMERCIAL STREET PARK RENOVATION

The Roseburg Area Chamber of Commerce Project Leadership Class of 1999 and the Parks Department are joining together to improve the Commercial Street Park. This small park has been in a state of disrepair for a number of years. The Leadership Class wanted to bring the park back to a state where it can be used and enjoyed by everyone, especially those who live in the neighborhood.

Using a short survey and an open house at the park, it was determined that a small basketball court, a play structure, picnic tables and landscaping would create a very nice small park for this area.

Project Leadership is assisting on the project not only through their own labor but also by gathering donations of materials and cash contributions. The remaining funds needed to complete the project will come from a portion of the park bond issue which was approved in November 1998.



STEWART PARK GOLF COURSE

Stewart Park Golf Course is the only nine-hole publicly owned course in Douglas County and is maintained by the City of Roseburg. The City operates the golf course as an enterprise fund and uses the fees to cover operating costs. Property taxes do not support the golf course, and fees generated from the course are not used to support other City departments.

A concessionaire manages the operation of the course. The City of Roseburg is pleased to announce Pat Huffer, a 16-year PGA Professional, became concessionaire at Stewart Park on April 1, 1999. Huffer operates the Pro Shop, driving range and the Caddy Shack Restaurant. The City employs two full time and two seasonal staff members to maintain the course's day to day maintenance.

Golf course policies are recommended to City Council by the Golf Course Commission which meets the third Monday of every month at noon in City Hall. Staff and the Commission identify and set priorities for improvements to the course. Currently, the Commission's primary project is a drainage system to remove surface water from the course so golfers can enjoy playing even in inclement weather.

The course is open for play seven days a week from 6:30 a.m. until dusk, except Mondays when the course opens at 10:00 a.m. Standard nine-hole rates are \$8.50 on weekdays and \$10.50 on weekends. Discounts and passes are also available. Contact the Pro Shop at 672-4592 for details and a tee time or the Golf Department in City Hall at 672-7701 for further information.

ROSTER OF PARK FACILITY ORGANIZED USERS

There are many recreational activities in Stewart Park which are organized by a tremendous number of volunteers who make these programs successful. The list below is provided for your information should you want to learn more about these recreational opportunities.

BASEBALL

Little League
(Ages 5-12)
Shawn Lybarger
673-4783

Babe Ruth
(Ages 13-15)
Tom Donegan
672-9795

American Legion
(Ages 16-19)
Leland Black
673-7853

SOFTBALL

ASA-Indian Fast Pitch
Pete Fullerton
Work 679-6751;
Home 672-9531

DC Men's Softball Association
Sid Toleno
672-4767

DC Women's Softball Association
Bobbi Brown
957-8309

Roseburg Church League
Greg Knee
459-6088

GOLF

Men's Golf Association
Andy Gaylor
679-5598

Women's Golf Association
Nancy Stockhoff
673-3929

BASKETBALL
Roseburg Church League
Tim Snyder
440-2817

HORSESHOES
Roseburg Horseshoe Club
Pat and Art Gee
459-9549

SOCCER
Roseburg Soccer Association
Frank Tarascio
673-0000

YMCA
Stephanie Roberts
440-9622

**Give us a call.
Come join in
the fun!**

TENNIS
Umpqua Valley Tennis Club
673-3429

WATER AND SEWER IMPROVEMENTS

In May, Arlyn Davis Construction of Sherwood, Oregon, completed the installation of water and sewer improvements on Lane, Kane and Hawthorne Streets. Over 3,750 feet of water main and 2,600 feet of sewer pipe was installed, at a total cost of \$580,000. The project was done jointly by the Roseburg Urban Sanitary Authority and the City of Roseburg Water Department. The new pipes replaced existing undersized mains that were in poor condition and subject to frequent leaks.



This installation is the first of a multi-phase project to improve domestic water and fire flows in the upper elevations of Terrace, Summit and Fisher Drives, Reservoir, Laurel, Kansas, Wildwood and Florida

Avenues and Parkwood Street. Future phases will include the installation of a new main between Reservoir Avenue and the recently completed 800,000-gallon Terrace Reservoir, and a new pump station and 600,000 gallon reservoir to replace the existing facilities on Reservoir Avenue.

Other projects in various stages of construction by the Water Department this summer include the installation of 980 feet of main on Airport Road, 2,200 feet of main on Stewart Parkway south of Valley View Drive, 1,600 feet of main on Bower Street and General Avenue and the repainting of the Fairhill Avenue reservoir.

WILDLIFE POND PARKING LOT PAVEMENT PROJECT

Those of you who enjoy visiting the Stewart Park Duck Pond now have a paved parking area. The 30,000 square foot parking lot contains two van accessible handicapped spaces and 45 regular spaces. Curbing and tree planter islands have been installed as well as a walk path along both sides of the parking area. Future improvements in the immediate area include the building of a skateboard park, restrooms, improved landscaping, seating benches, picnic tables, additional trails and a wildlife viewing station.



CITY NEEDS YOUR HELP

There are approximately 2,200 streetlights throughout Roseburg. We want your help in making sure they are all working. If you see a street light out, please call the Public Works Department at 672-7701, extension 236. When you call, give the identification number located on the pole or the street address that is nearest the malfunctioning light. Staff will then contact the appropriate company for repair. Thank you for your assistance.



PAVEMENT "FACELIFTS" ARE SCHEDULED

As part of the City of Roseburg's Pavement Management Program, thirty-five streets will get "facelifts" this summer. The goal of this program is to preserve the existing streets within the City in the most efficient way possible.

There are three pavement preservation methods that the City of Roseburg uses; overlays, slurry seals, and chip seals. An overlay is the addition of 1-1/2" to 2-1/2" of asphalt over an existing paved surface. Slurry seal is a very thin layer of rock with an asphalt emulsifier applied to a paved surface. Chip seal is a layer of asphalt liquid that is applied and then covered with rock to form a new surface. Overlays and slurry seals are used primarily as preventative maintenance to prolong the life of the paved surface. Chip seals are used both for pavement longevity and to upgrade gravel sections. The degree of deterioration of a given street is evaluated to determine the method used.

This year's program will focus on overlays and slurry seals. The following streets are scheduled for work this summer.

OVERLAYS

- | | |
|-------------------------|------------------------------|
| 1. Barager Avenue | Sunset to Todd |
| 2. Jackson Street | Rice to Orcutt |
| 3. Fairhaven Street | Myrtle to Harvard |
| 4. Rainbow Street | South end to Harvard |
| 5. Foothill Drive | West end to Harvard |
| 6. Fromdahl Court | Fromdahl to cul-de-sac |
| 7. Silver Court | Fromdahl to cul-de-sac |
| 8. Copper Court | Fromdahl to cul-de-sac |
| 9. Susan Street | Center to Sharp |
| 10. Riverview Drive | Jefferson to end of pavement |
| 11. Lester Street | Martin to Calkins |
| 12. Randall Court | Keasey to cul-de-sac |
| 13. Avoy Court | Moore to cul-de-sac |
| 14. Sunberry Drive | Troost to west end |
| 15. Hughwood Avenue | West end to phase I |
| 16. Brent Court | Kline to cul-de-sac |
| 17. Hawthorne Avenue | Main to Manzanita |
| 18. Killdeer Place | Sharp to Oriole |
| 19. Tanager Street | Sharp to Oriole |
| 20. Kane Street | End of Asphalt to Hawthorne |
| 21. Rose Street | Mosher to Washington |
| 22. Hazel Street | Moose to Harvard |
| 23. Moose Avenue | West end to cul-de-sac |
| 24. Garden Valley Blvd. | Mall entrance to Mulholland |
| 25. Whipple Street | West end to Jefferson |

SLURRY SEALS

- | | |
|--------------------|------------------------------------|
| 1. Kane Street | Lane to Douglas |
| 2. Main Street | Mosher to Douglas |
| 3. Pilger Street | Military to Harvard |
| 4. Kenwood Street | Crestview to Harvard |
| 5. Sanders Avenue | West end to Broccoli |
| 6. Hazel Street | Harvard to Sherwood |
| 7. Sharp Street | Central to Hickory |
| 8. Vale Court | Kline to cul-de-sac |
| 9. Lynnwood Street | Calkins to Moore |
| 10. Airport Road | Garden Valley to north end phase I |

Notice will generally be given to affected residents a day or two in advance. At that time, a door-hanger will be left indicating that all vehicles need to be removed from a section of street for a given amount of time. Residents whose streets are affected may be asked to park in their driveways or down the street and walk to their house for one day. Cooperation in this process is greatly appreciated by everyone involved.

HYDRANT FLUSHING

The Fire Department will be flushing fire hydrants during July, August and September. This annual testing is done to ensure the proper functioning and delivery of adequate water from the water mains when needed for fire control.

The schedule of dates and locations of the tests are listed below. With this information, persons desiring to draw fresh water for use during the flushing operations may do so. This will help reduce the possibility of drawing sediment filled water in the area of and on the day of the flushing.



Through July: East side of Roseburg from the river, south to the City limits and North to Malheur.

July 31 through August 18: West side of Roseburg from Washington Street Bridge to City limits.

August 19 through September 24: North Roseburg

Anyone requesting information regarding hydrant flushing may call the Roseburg Fire Department at 673-4459.

FIRE DEPARTMENT ADDS NEW VEHICLE

This new vehicle will improve the firefighting capabilities of the City's Fire Department. Rather than purchasing a "ready-to-go" brush rig, the department bid out the chassis, utility bed and compartments and a compressed air foam unit. By purchasing the individual components, several thousand dollars were saved. In addition, the City received assistance from the Douglas Fore Protective Association with the installation of the truck.

This truck will be used as a wildland firefighting engine and will be ready for this year's fire season.



NEW SELF INSPECTION PROGRAM

In the near future, the Fire Department will begin testing a new pilot program, Self-Inspection for Local Businesses. Several businesses that have a statistically lower incident of fire will be selected to try the new program. The program should meet goals common to both the owner/manager and the Fire Department. These goals include maintaining a reasonable level of fire and life safety standards while providing a minimum of business disruption. This concept would allow local businesses to meet the annual requirement for fire inspection through self-inspection. The program will be designed to have the Fire Department perform an

inspection of your business every third year. This will help us concentrate our inspection efforts on businesses or occupancies that pose a greater risk of fire.

BURN PERMITS

The City of Roseburg Fire Department allows yard debris (clippings, trimmings) in small piles to be burned twice a year. The first burn season is April 15 to May 15 and the second burn season is October 1 to October 31. No burn barrels are allowed within the City limits. Burning of any substance other than natural vegetation, leaves, tree limbs, etc. is prohibited. You must purchase a burn permit from the Fire Department. Permits are \$25 and can be purchased after the Fire Marshal has inspected the burn site. All permits can be issued either at the burn site or at 774 SE Rose. Burn permits are issued for seven days only unless specifically noted on the permit. A shovel and garden hose are required on site while burning. Open burning will not be conducted within 50 feet of any structure or other combustible material. An adult must be present while burning is taking place and no burning is allowed after dark. If you have any questions please feel free to contact Amy or Tony at 673-4459.

WEED ABATEMENT

Weed abatement season is fast approaching. Please remember to cut all your weeds and grass down. The Fire Department will once again be enforcing the City of Roseburg Weed Abatement Program. In accordance with the Roseburg Municipal Code, any

obnoxious vegetation that is found to exist between June 15 and September 30 on developed or undeveloped property within the Roseburg City limits will be considered a fire hazard and therefore a public nuisance to be abated. The term "obnoxious vegetation" includes the following:

1. Weeds, grass or legumes above a height of twelve inches.
2. Poison oak or poison ivy.
3. Vegetation or blackberry vines that:
 - a. are a fire hazard because they are near other combustibles;
 - b. extend into a public way; or
 - c. are used for habitation by trespassers.
4. Vegetation which is a vision obstruction.

If not abated by the person responsible for the property within ten days following a notice sent by the Fire Department, the City will abate such obnoxious vegetation and charge the person responsible for the property the cost of doing so.

For more information regarding the Weed Abatement Program, please contact Fire Marshal Tony Dimare at 673-4459.

VACATION HOUSE CHECKS

While on vacation, City of Roseburg residents can have their homes checked by a Roseburg Police Department volunteer. Call the Police Department at 673-6633 during regular business hours and answer a few questions. Our volunteers will check your house periodically during your absence, up to 30 days. The only restriction is that the house must not be empty, "for sale", or otherwise vacant. We encourage you to have an emergency contact list in case something "out of the ordinary" is found.



ORDINANCES & RESOLUTIONS

The following are the Ordinances and Resolutions passed by the Roseburg City Council during the second six months of fiscal year 1998/99.

"ORDINANCE": A written directive or act of a governing body. Ordinances have the full effect of law within the local government's boundaries, provided that they do not conflict with a state statute or constitutional provision. An ordinance has two readings at Council prior to being voted on by the Council. An ordinance becomes effective 30 days after the second reading, unless an emergency is declared which enables the Ordinance to become effective immediately.

ORDINANCE NO. 3036: "An Ordinance Amending the Roseburg Comprehensive Plan Map for Property Located East of Shakemill Road and North of Northbank Road in the Community of Wilbur" Adopted January 11, 1999.

ORDINANCE NO. 3037: "An Ordinance Amending the Roseburg Urban Growth Boundary and Comprehensive Plan Land Use Map for Property Known as the Douglas County Forest Products/Roseburg Resources Property Located on the North Side of Del Rio Road, Northwest of the Del Rio Road/I-5 Intersection" Adopted January 11, 1999.

ORDINANCE NO. 3038: "An Ordinance Amending Article 3, of Chapter 2 of Land Use and Development Ordinance No. 2981 As Amended" Adopted January 25, 1999.

ORDINANCE NO. 3039: "An Ordinance Amending the Roseburg Comprehensive Plan Map and Concurrent Zone Change for a Portion of the Property Known as the Jack and Tami Trowbridge Property Located at the Southern Terminus of NE Emerald Drive" Adopted February 8, 1999.

ORDINANCE NO. 3040: "An Ordinance Amending the Roseburg Zoning Map for Property Known as the Loomis Property Located on the Southeast Corner of NE Stephens and Imbler Streets" Adopted April 12, 1999.

ORDINANCE NO. 3041: "An Ordinance Amending Chapter 9.18 of the Roseburg Municipal Code by Requiring a Quitting Business Sale Permit After Advertising or Conducting a Quitting Business Sale for More Than 90 Days" Adopted April 26, 1999.

ORDINANCE NO. 3042: "An Ordinance Vacating a Portion of W Sherwood Avenue in the City of Roseburg" Adopted May 10, 1999.

ORDINANCE NO. 3043: "An Ordinance Vacating Portions of NE Thomas Street, Brooklyn Avenue and William Street in the City of Roseburg, and Declaring an Emergency" Adopted April 26, 1999.

ORDINANCE NO. 3044: "An Ordinance Amending the Roseburg Urban Growth Boundary and Comprehensive Plan Land Use Map for Property Known as the Skeels/Winchester Property Located on the South Side of Del Rio Road, North of the North Umpqua River, and Southwest of the Southern Pacific Railroad Road Right-of-Way/Del Rio Road Intersection" Adopted June 14, 1999.

ORDINANCE NO. 3045: "An Ordinance Amending the Roseburg Comprehensive Plan Land Use Map for Property Known as the Crowe Family/FCC Commercial Furniture Property Located on the West Side of Old Hwy. 99 and South of the Wilbur Road/Old Hwy. 99 Intersection" Adopted June 14, 1999.

"RESOLUTION": An order of a governing body; requires less legal formality than an Ordinance. Statutes or City Charter will specify which actions must be by Ordinance and which may be by Resolution. For cities, revenue-raising measures such as taxes, special assessments and service charges are always imposed by Ordinance; fee amendments, however, are made by Resolution. Prior to adoption, a Resolution only needs to be read before the City Council once (by title only, if no member of the Council objects).

RESOLUTION NO. 99-1: "A Resolution Authorizing Parks General Obligation Bonds" Adopted January 11, 1999.

RESOLUTION NO. 99-2: "A Resolution Rescinding Resolution No. 94-11 and Amending the City of Roseburg's Public Records/Information Request Policy" Adopted February 22, 1999.

RESOLUTION NO. 99-3: "A Resolution Supporting the Housing Authority of Douglas County Application for the Perry House Residence" Adopted March 8, 1999.

RESOLUTION NO. 99-4: "A Resolution Adopting Goals for the City of Roseburg for 1999-2000" Adopted March 22, 1999.

RESOLUTION NO. 99-5: "A Resolution Amending Resolution No. 92-13 Regarding the City of Roseburg Fee Schedule by Amending Community Development Fees" Adopted March 22, 1999.

RESOLUTION NO. 99-6: "A Resolution Amending Resolution No. 92-13 Regarding the City of Roseburg Fee Schedule by Decreasing the Quitting Business Sale Permit Fee" Adopted April 26, 1999.

RESOLUTION NO. 99-7: "A Resolution Exempting From Competitive Bid Acquisition of Computer and Operating System Upgrades for Water Treatment Plant" Adopted April 26, 1999.

RESOLUTION NO. 99-8: "A Resolution Rescinding Resolution No. 99-2 and Amending the City of Roseburg's Public Records/Information Request Policy" Adopted May 10, 1999.

RESOLUTION NO. 99-9: "A Resolution Authorizing 1998/99 Budget Transfers" Adopted June 14, 1999.

RESOLUTION NO. 99-10: A Resolution Adopting the 1999/2000 Budget; levying and Categorizing Taxes for Said Tax Year; Electing to Receive State Revenue Sharing; and Making Appropriations" Adopted June 28, 1999.

Complete copies of, or more information regarding, City Ordinances and Resolutions may be obtained through the City Recorder's Office in City Hall, 900 SE Douglas Avenue, Roseburg; by calling 672-7701, extension 217, or requested via e-mail sent to "roseburg@rosenet.net".

CITY MEETING CALENDAR

City Commissions conduct regular public meetings according to the following schedule:

Airport Commission	4th Tuesdays	noon	Conference Room
City Council	2nd & 4th Mondays	7:00 p.m.	Council Chambers
Downtown Development	3rd Wednesdays	8:00 a.m.	Conference Room
Economic Development	2nd Tuesdays	noon	Conference Room
Golf Course Commission	3rd Mondays	noon	Conference Room
Historic Resources Review	1st & 3rd Thursdays	1:00 p.m.	Conference Room
Parks & Recreation	1st Wednesdays	7:30 a.m.	Conference Room
Planning Commission	1st & 3rd Mondays	7:00 p.m.	Council Chambers
Public Works Commission	2nd Thursdays	noon	Conference Room
Utility Commission	2nd Thursdays	3:30 p.m.	Conference Room
Visitors & Convention	3rd Tuesdays	3:30 p.m.	Conference Room

AUGUST 1999

- 2 Planning 7 pm
- 4 Parks 7:30 am
- 5 Historic 1 pm
- 9 Council 7 pm
- 10 Economic noon
- 12 Public Works noon
- 12 Utility 3:30 pm
- 16 Golf noon
- 16 Planning 7 pm
- 17 Visitors 3:30 pm
- 18 Downtown 8 am
- 19 Historic 1 pm
- 23 Council 7 pm
- 24 Airport noon

SEPTEMBER 1999

- 1 Parks 7:30 am
- 2 Historic 1 pm
- 6 Closed for Labor Day
- 7 Planning 7 pm
- 9 Public Works noon
- 9 Utility 3:30 pm
- 13 Council 7 pm
- 14 Economic noon
- 15 Downtown 8 am
- 16 Historic 1 pm
- 20 Golf noon
- 20 Planning 7 pm
- 21 Visitors 3:30 pm
- 22 Downtown 8 am
- 27 Council 7 pm
- 28 Airport noon

OCTOBER 1999

- 4 Planning 7 pm
- 6 Parks 7:30 am
- 7 Historic 1 pm
- 11 Council 7 pm
- 12 Economic noon
- 14 Public Works noon
- 14 Utility 3:30 pm
- 18 Golf noon
- 18 Planning 7 pm
- 19 Visitors 3:30 pm
- 20 Downtown 8 am
- 21 Historic 1 pm
- 25 Council 7 pm
- 26 Airport noon

Depending upon the number of issues needing attention by the Commissions, special meetings may be scheduled or regular meetings may be cancelled. Upon final preparation, summaries of meeting agendas are published in the News Review's public meeting calendar and are available at City Hall.

CITIZEN'S GUIDE TO CITY COUNCIL MEETING

Regular City Council meetings are held the second and fourth Monday of each month at 7:00 p.m. in the City Council Chambers at 900 SE Douglas Avenue. Agency upcoming Council meetings are available in the City Recorder's Office the Friday prior to the meeting. Current agendas are also available at the meeting. In rare instances the Council may deal with agenda items out of order.

Citizens attending Council meetings may speak on any item on the agenda, unless the item is the subject of an executive session or a public hearing where comment has been taken and the hearing has closed. Citizens may speak when recognized by the chair and will be required to give their name and address for the official record. A minimum of 12 copies should be provided if you are submitting handouts to Council.

Toward the beginning of each meeting, time is set aside for Audience Participation. At this time, anyone wishing to address the City Council concerning items of interest included in the agenda may do so. The person addressing the Council shall, when recognized, give his/her name and address for the record. All remarks shall be directed to the whole City Council. The Council reserves the right to delay any action, if required, until such time when they are fully informed on the matter.

CITIZEN SUGGESTION BOX

What would YOU like to see published in the next CITY CONNECTION?

Please return suggestions to: City Manager's Office,
900 SE Douglas, Roseburg OR 97470.
Phone 672-7701/FAX 673-2856
Email roseburg@rosenet.net

HOW TO APPLY FOR A CITY JOB

(When An Opening Occurs)

WHICH JOBS: All job opportunities with the City of Roseburg are advertised with the Oregon Employment Department, the News-Review and the City JobLine at (541) 440-1199. Applications are accepted only for positions currently open.

HOW TO APPLY: Complete a separate application for each position you wish to apply for and send to the Personnel Department by the closing date listed in the job announcement. Applications received after the closing date will not be considered. Resumes are not accepted. Applications for the City become the property of the City of Roseburg and cannot be returned. Resumes are not accepted either in addition to or in lieu of the City of Roseburg application form. Faxed applications are not accepted.

SELECTION PROCESS: Applications are thoroughly reviewed and screened by the Personnel Department. Since these are competitive selection processes, applicants whose backgrounds appear to closely match the needs of the particular vacancy will be considered. The Personnel Department will select candidates for testing and/or interview. Due to the number of applicants and the limited number of job opportunities, not all applicants proceed in the recruitment process.

A job application is an important reflection on you. Make sure you emphasize the knowledge, skills and employment experiences that best prepare you for the type of work for which you are applying.

NOTIFICATION: Every person applying for a position is notified as to the status of their application. Notifications are sent to applicants who have not been selected for interview; who are interviewed but not selected; and to applicants who are selected.