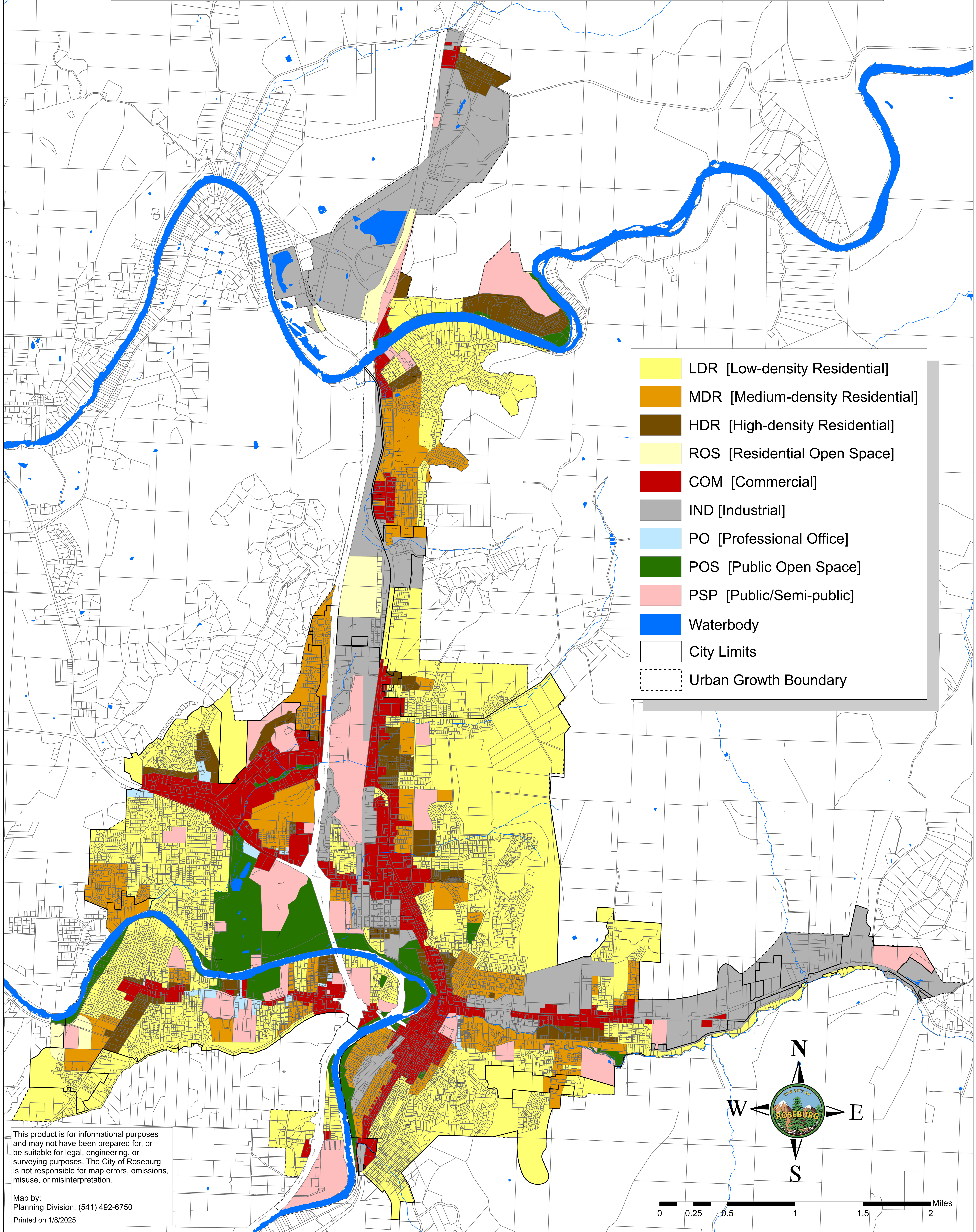


# Roseburg Comprehensive Plan Map



	LDR [Low-density Residential]
	MDR [Medium-density Residential]
	HDR [High-density Residential]
	ROS [Residential Open Space]
	COM [Commercial]
	IND [Industrial]
	PO [Professional Office]
	POS [Public Open Space]
	PSP [Public/Semi-public]
	Waterbody
	City Limits
	Urban Growth Boundary

This product is for informational purposes and may not have been prepared for, or be suitable for legal, engineering, or surveying purposes. The City of Roseburg is not responsible for map errors, omissions, misuse, or misinterpretation.

Map by:  
Planning Division, (541) 492-6750  
Printed on 1/8/2025

