

## Addendum 3

Client: City of Roseburg  
Project: Public Safety Center 3<sup>rd</sup> Floor Improvements  
Date: November 1, 2024  
To: Interested Bidder  
Prepared by: Curt Wilson, AIA; Principal, Wilson Architecture



This Addendum modifies the Project Manual, Specifications, and Drawings as follows:

### 1. General Information

- 1.1. The Pre-Bid Meeting was held on 10/18/2021. The meeting sign-up sheet is attached to this document.
- 1.2. Addendum 1 was issued on 10/11/2024.
- 1.3. Addendum 2 was issued on 10/24/2024
- 1.4. The bid opening date is November 5, 2024 at 2:00. Any references to other bid opening dates in the bidding information to be deleted.
- 1.5. Potential Prime Bidders

a.	DSL Builders	JJ Macedo	jjm@dsl-builders.com
b.	GBC Construction	Joel Freeman	joel@gbcconstruction.com
c.	Ryan Thomas Construction	Ryan Thomas	ryan@rthomasconstruction.com
d.	SB James Construction	Jonathan Fisher	jonathanfisher@sbjames.com
e.	Z Terrell and Sons	Zak Terrell	zakterrell@gmail.com
f.	Bridgeway Contracting	JJ Johansen	jjj@bridgewaycontracting.com

### 2. Changes to the Project Manual

- 2.1. Section 08 0607 - Door Hardware
    - a. Replace previously issued section with the attached section. The following items have been addressed on this sheet.
      - Door hardware type and quality modified to better align with the existing hardware.
      - Door hardware scheduled modified to list both Schlage and Corbin Russwin products.
      - Door Group 5 modified to describe new alarmed panic and related components.
  - 2.2. Section 08 1416 – Flush Wood Doors
    - a. Item 2.2.B.1 – Sound Resistant Doors: Change STC rating from 45 to 41.
  - 2.3. Section 10 2800 – Toilet Accessories
    - a. Item 2.5.A. Folding Shower Seat. Delete items 1-4 and replace with: “1. See Plumbing”.
    - b. Item 2.5.B. Grab Bars. Add Item 2 to read: “2. See Plumbing”.
-

### 3. Changes to the Drawings

#### 3.1. Sheet A113.3 – Floor Plan – Third Floor – NE

- a. Replace previously issued sheet with the attached sheet. The following items have been addressed on this sheet.
  - Keynote 13 added. Information applies to the north side of the north wall at the existing stair enclosure.
  - Extent of existing gyp board in NW corner.

#### 3.2. Sheet A122.3 – Ceiling Plan – Second Floor – NE

- a. Replace previously issued sheet with the attached sheet. The following items have been addressed on this sheet.
  - Sheet note added to address coordination with plumbing improvements above the ceiling.

#### 3.3. Sheet A123.3 – Ceiling Plan – Third Floor – NE

- a. Replace previously issued sheet with the attached sheet. The following items have been addressed on this sheet.
  - Ceiling access hatch in Room 356.B added.

#### 3.4. Sheet 129.3 – Roof Plan – NE

- a. Add General Note a to read: “a. SEE DETAIL 2/A151 FOR ROOF REPAIRS AT NEW CURBS AND OTHER VERTICALE PENETRATIONS NOT PIPES, AND SEE DETAIL 3/A151 FOR ROOF REPAIR AND FLASHINGS AT PIPE PENETRATIONS.”

#### 3.5. Sheet A151 – Details

- a. Replace previously issued sheet with the attached sheet. The following items have been addressed on this sheet.
  - Add Details 2 and 3.

#### 3.6. Sheet A170 – Finish Schedule

- a. Replace previously issued sheet with the attached sheet. The following items have been addressed on this sheet.
  - Finish Schedule. Room 358 – Open Office 3. Change the Wall Material on the North, East, and West walls from “GB” to “EXST GB”.
  - Finish Schedule. Room 356.B – Shower B. Change the Wall Material on the West wall from “GB/TILE” to “EXST GB/TILE”.
  - Add Detail 3.

#### 3.7. Sheet A171 – Interior Elevations

- a. Modify Keynote 2 to read: “2. EXST WINDOW SILL. SEE DETAIL 3/A170.”

#### 3.8. Sheet A180 – Door Schedule

- a. Replace previously issued sheet with the attached sheet. The following items have been addressed on this sheet.

- Information added for Doors 356.1, 356.C.1, and 359.1

b.

4. Approved Product Substitutions

- 4.1. Multiple light fixture products submitted by ALR.

**End of Addendum**

5. Attachments

- 5.1. Replacement sheets identified above.

This page intentionally  
blank

**SECTION 08 0607**

**DOOR HARDWARE SCHEDULE**

*Addendum 3 Note: The Door Hardware Schedule has reorganized into separate lists for Schlage products and Corbin Russwin products, and the type and quality level of the components has been adjusted to better align with the existing hardware. Note: The Corbin Russwin ML2000 Series and DC800 Series matches the existing hardware. Existing keying is Schlage Primus LFIC.*

**List 1 – Corbin Russwin Line**

<b>Manufacturer List</b>		<b>Finish List</b>	
<u>Code</u>	<u>Name</u>	<u>Code</u>	<u>Description</u>
CR	Corbin Russwin	26D	Satin Chrome
AL	Alarm Lock Systems	32D	Satin Stainless Steel
HA	HES	626	Satin Chromium Plated
JO	L. E. Johnson Products, Inc.	630	Satin Stainless Steel
		EN	Sprayed Finish, Aluminum
MC	McKinney	GRAY	Gray
NO	Norton	US28	Aluminum - Clear Anodized
PE	Pemko	US26D	Chromium Plated, Dull
RO	Rockwood	US32D	Stainless Steel, Dull
		689	Aluminum

Column Headings

<u>Quant.</u>	<u>Component</u>	<u>Product Description</u>	<u>Finish</u>	<u>Mfr</u>
<b>GROUP 1</b>	<b>Interior - Office</b>			
3	Hinges	T4A3786 4 1/2 x 4 1/2 NRP	26D	MC
1	Lockset - Office Func	ML2051 LSA x SA114 x LC	626	CR
1	Cylinder	20-787 x B520-309	626	SC
1	Wall Stop	409	US32D	RO
1	Seals	S88 D 17'		PE
<b>GROUP 2</b>	<b>Interior – Shower Room</b>			
3	Hinges	T4A3786 4 1/2 x 4 1/2 NRP	26D	MC
1	Privacy w/ Occupancy Indicator	ML2065 SA x LC x SA114 x M19V	626	CR
1	Cylinder	20-787 x B520-309	626	SC
1	Closer	DC8210	689	CR
1	Auto Door Bottom			
1	Kick Plate	K1050 10" x 34"	US32D	RO
1	Wall Stop	409	US32D	RO
1	Seals	S88 D 17'		PE
<b>GROUP 3</b>	<b>Interior – Store Room</b>			
3	Butt Hinge	T4A3786 4 1/2 x 4 1/2 NRP	26D	MC
1	Lockset – Storeroom Func.	ML2057 LSA x SA114 x LC	626	CR
1	Cylinder	20-787 x B520-309	626	SC
1	Closer	411x HEDA	AL	LC
3	Door Silencer	608	GRY	RO

**GROUP 4 Interior – Existing Office Area Door**

1	Closer	DC8210	689	CR
Balance of hardware to remain.				

**GROUP 5 Interior – Stairwell – Note, the following is based on CR products, match with Schlage**

1	Exit Device	ED5200A x M61 x M35	630	CR
1	Power Supply	784-9V		CR
1	Trim	L9905ET LHR	630	CR
1	Cylinder	20-709	626	SC
1	Cup/Cam Assembly	720F68-8		CR
1	Harness (run inside bar skin)	QC-C400P		MC
1	Sex Bolt (to fill exposed hole)	SN-134	626	CR

*Note: The access control card reader is existing. The design intent with the new hardware is to provide an alarm when the door is opened from the hallway. Presenting a prox card to the card reader is necessary to turn off or temporarily disable the alarm.*

*Remove existing hardware that is replace by the items above. Balance of hardware to remain.*

**List 2 – Schlage Line****Manufacturer List**

<u>Code</u>	<u>Name</u>
AC	Accurate Lock and Hardware
AL	Alarm Lock Systems
HA	HES
JO	L. E. Johnson Products, Inc.
LCN	LCN
MC	McKinney
NO	Norton
PE	Pemko
RO	Rockwood

**Finish List**

<u>Code</u>	<u>Description</u>
26D	Satin Chrome
32D	Satin Stainless Steel
626	Satin Chromium Plated
630	Satin Stainless Steel
EN	Sprayed Finish, Aluminum
GRAY	Gray
US28	Aluminum - Clear Anodized
US26D	Chromium Plated, Dull
US32D	Stainless Steel, Dull

Column Headings

Quant.	Component	Product Description	Finish	Mfr
--------	-----------	---------------------	--------	-----

**GROUP 1 Interior - Office**

3	Hinges	T4A3786 4 1/2 x 4 1/2 NRP	26D	MC
1	Lockset - Office Func	L9053J 03A	626	SC
1	Cylinder	20-787	626	SC
1	Wall Stop	WS406/407CCV	US32D	IV
1	Seals	S88 D 17'		PE

**GROUP 2 Interior – Shower Room**

3	Hinges	T4A3786 4 1/2 x 4 1/2 NRP	26D	MC
1	Privacy w/ Occupancy Indicator	L9456J 03A OS-OCC L583-363	626	SC
1	Cylinder	20-787	626	SC
1	Closer	411x HEDA	AL	LC
1	Auto Door Bottom			

1	Kick Plate	8400 10" x 34"	US32D	IV
1	Wall Stop	WS406/407CCV	US32D	IV
1	Seals	S88 D 17'		PE
<b>GROUP 3 Interior – Store Room</b>				
3	Butt Hinge	T4A3786 4 1/2 x 4 1/2 NRP	26D	MC
1	Lockset – Storeroom Func.	L9080J 03A	626	SC
1	Cylinder	20-787	626	SC
1	Closer	411x HEDA	AL	LC
3	Door Silencer	SR64	GRY	IV
<b>GROUP 4 Interior – Existing Office Area Door</b>				
1	Closer	411x HEDA	AL	LC
	Balance of hardware to remain.			
<b>GROUP 5 Interior – Stairwell – See the CR List, match with Schlage</b>				

**END OF SECTION**

This page intentionally  
blank





### GENERAL NOTES - FLOOR PLAN

- SEE SHEET A160.1 FOR WALL ASSEMBLIES ASSEMBLIES.
- SEE SHEET 2/A160.2 FOR FLOOR AND CEILING ASSEMBLIES AND ADDITIONAL WALL FRAMING INFORMATION.
- DIMENSIONS FROM FACE OF STUD UNLESS NOTED OTHERWISE.
- DIMENSIONS AT OPENINGS TO ROUGH OPENING UNLESS NOTED OTHERWISE.
- SEE SHEET G001 FOR WALL LEGEND AND ADDITIONAL INFORMATION.

### KEYNOTES - FLOOR PLAN #

- EXST WALL
- EXST DOOR
- EXST WINDOW
- CASEWORK, SEE INTERIOR ELEVATIONS AND FINISH SCHEDULE.
- WRAPPED OPENING AS DETAILED.
- SEE 2/A161 FOR FRAMING AND WALL FINISH AT JAMB AT NEW OPENING IN THE EXISTING WALL.
- REPLACE EXST INSULATED GLAZING UNIT WITH NEW SPANDREL-COATED INSULATED GLAZING UNIT. EXST FRAME TO REMAIN. FIELD VERIFY WINDOW SIZE, CONFIGURATION, AND OPERATION. SEE SHEET A180 FOR MORE INFORMATION.
- FLOORING TRANSITION. SEE 1/170. LETTER IDENTIFIES TYPE.
- EXST CONDUIT RACEWAY TO ROOF. PROTECTION FROM DAMAGE.
- EXTEND THIS WALL TO ROOF STRUCTURE, SIMILAR TO 10/A161.
- EXTEND THIS WALL TO ROOF STRUCTURE, SIMILAR TO 7/A161.
- FEC. SEE SHEET G001.
- COORDINATE ROUTING OF NEW WIRING FOR NEW POWER AND DATA DEVICES IN THIS WALL WITH ELECTRICAL. PATCH WALL AND MATCH EXISTING SURFACE TEXTURE. NOTE, THIS IS 1-HR RATED WALL.

### FLOOR ASSEMBLY LEGEND

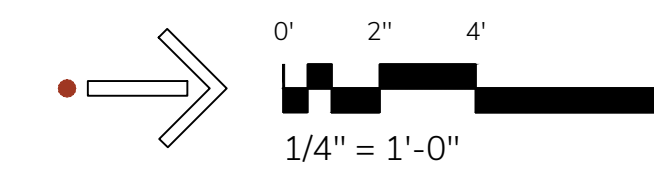
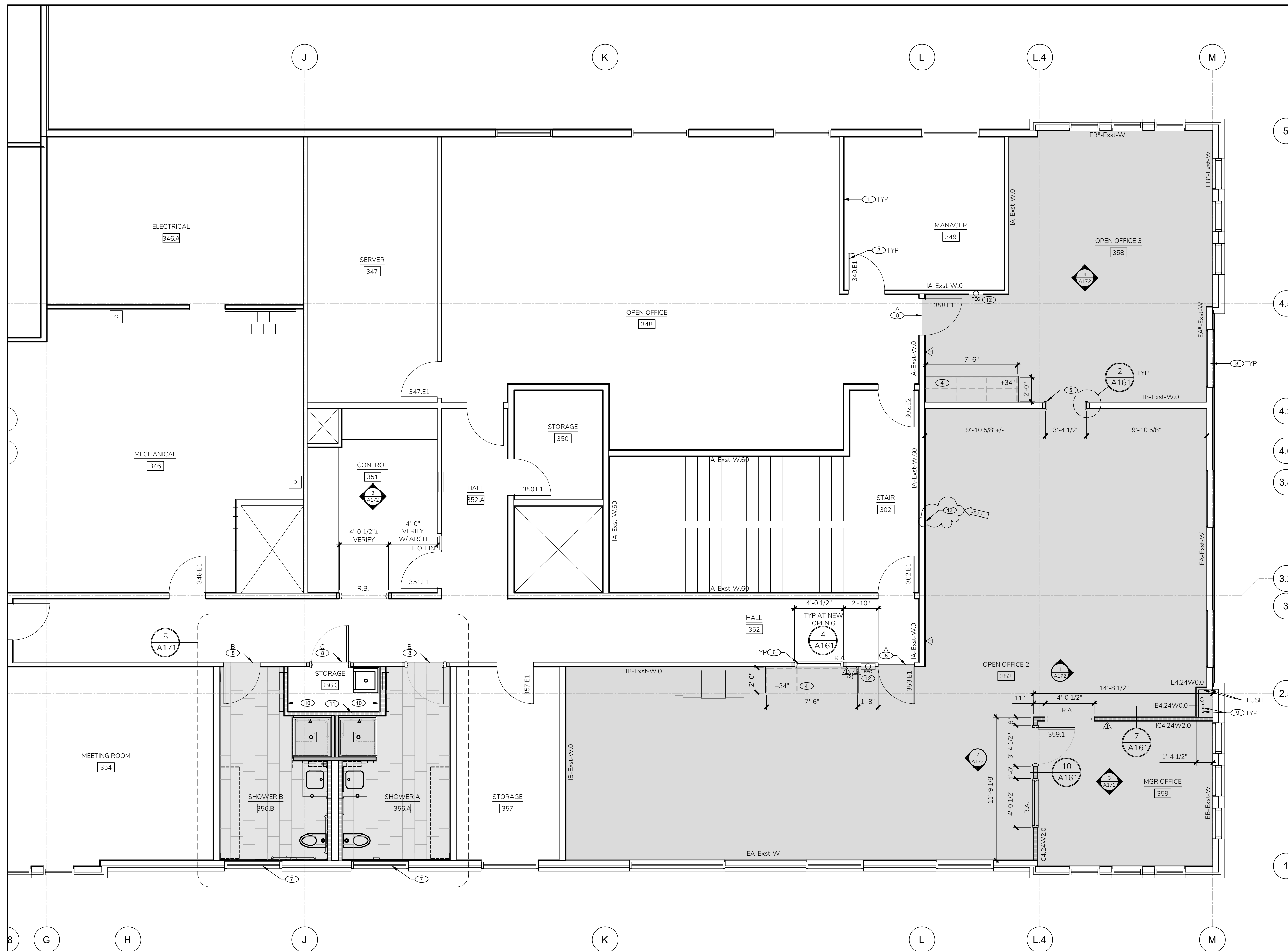
- FLOOR ASSEMBLY A
- FLOOR ASSEMBLY B
- FLOOR ASSEMBLY - EXISTING. EXISTING FLOOR COVERING TO REMAIN.

Construction Documents  
City of Roseburg  
PSC 3rd Floor Improvements

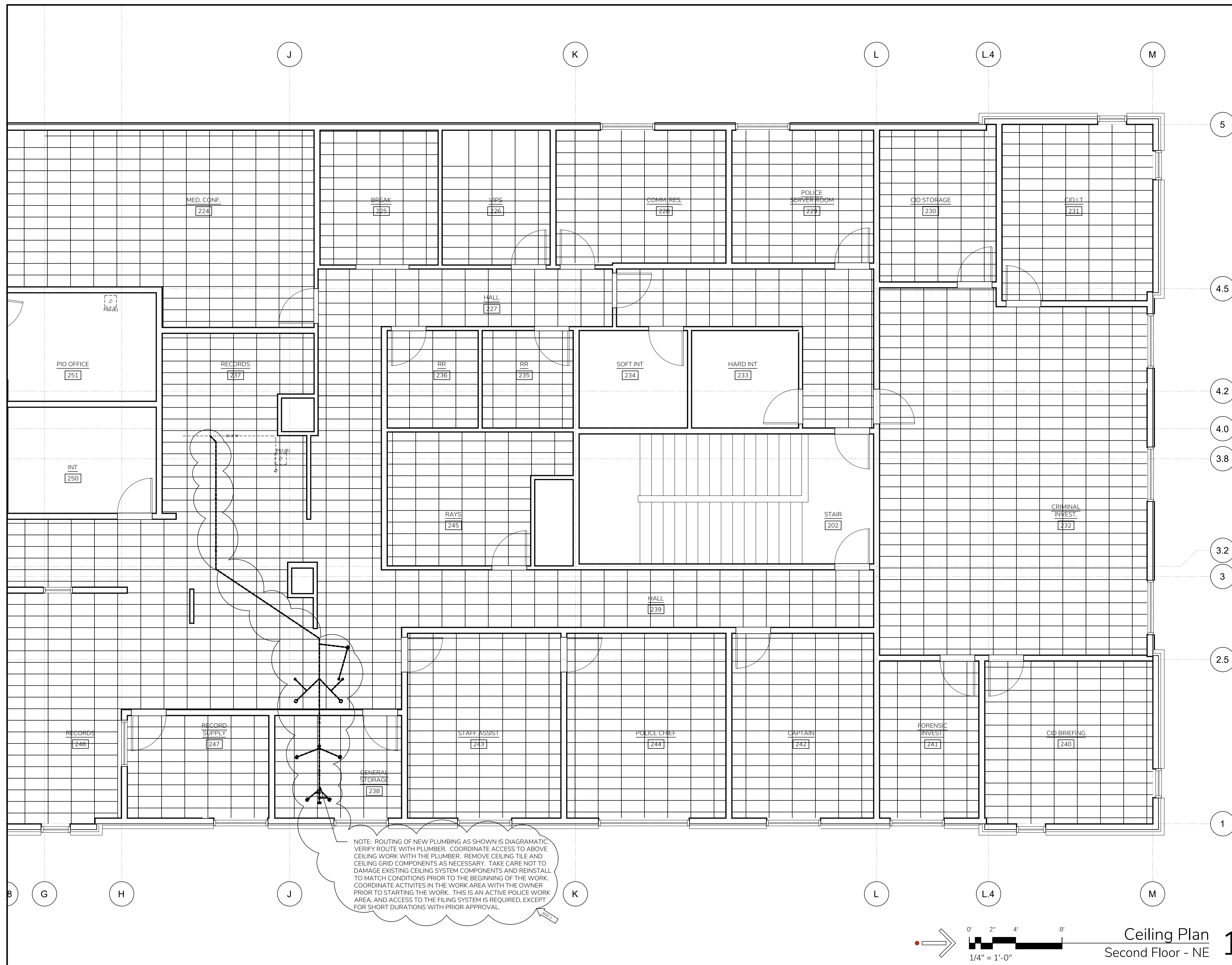
PROJECT: 22022 Floor Plan - Third Floor - NE

CHECKED: CW  
DATE: 10.03.2024 REVISIONS: ADD 03 - 11/01/2024

A113.3

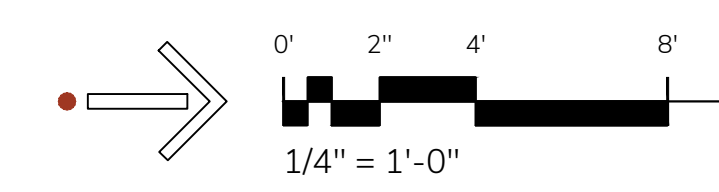


Floor Plan 1  
Third Floor - NE



NOTE: ROUTING OF NEW PLUMBING AS SHOWN IS DIAGRAMATIC. VERIFY ROUTE WITH PLUMBER. COORDINATE ACCESS TO ABOVE CEILING WORK WITH THE PLUMBER. REMOVE CEILING TILE AND CEILING GRID COMPONENTS AS NECESSARY. TAKE CARE NOT TO DAMAGE EXISTING CEILING SYSTEM COMPONENTS AND REINSTALL TO MATCH CONDITIONS PRIOR TO THE BEGINNING OF THE WORK. COORDINATE ACTIVITIES IN THE WORK AREA WITH THE OWNER PRIOR TO STARTING THE WORK. THIS IS AN ACTIVE POLICE WORK AREA, AND ACCESS TO THE FILING SYSTEM IS REQUIRED, EXCEPT FOR SHORT DURATIONS WITH PRIOR APPROVAL.

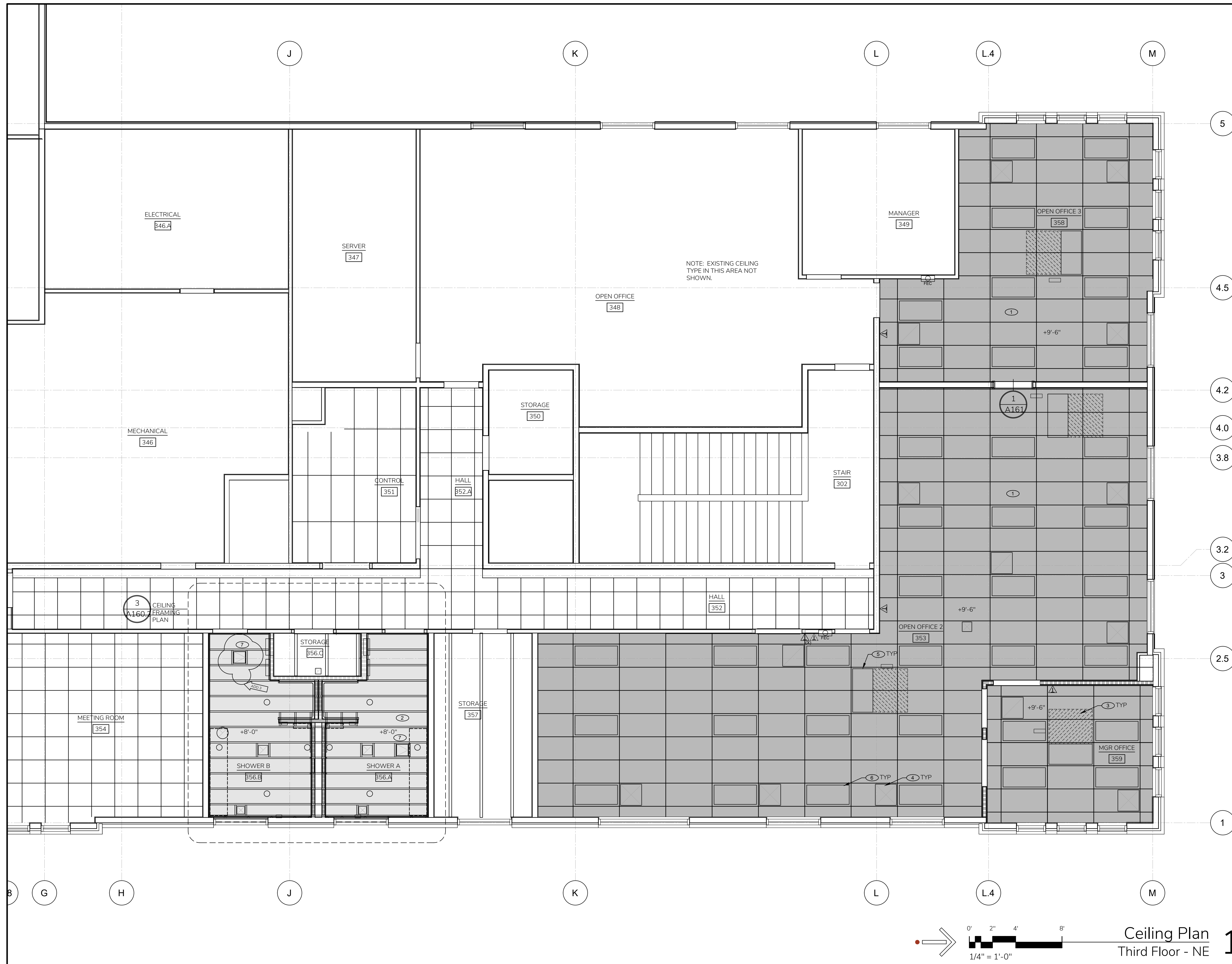
Construction Documents  
City of Roseburg  
PSC 3rd Floor Improvements



Ceiling Plan  
Second Floor - NE **1**

PROJECT: 22022 Ceiling Plan - Second Floor - NE  
CHECKED: CW  
DATE: 10.03.2024 REVISIONS: ADD 03 - 11/01/2024

A122.3



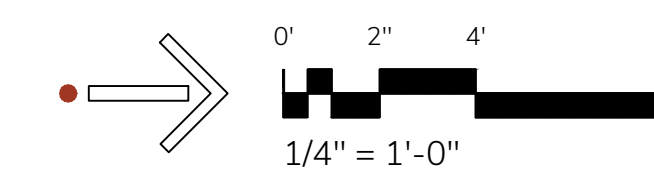
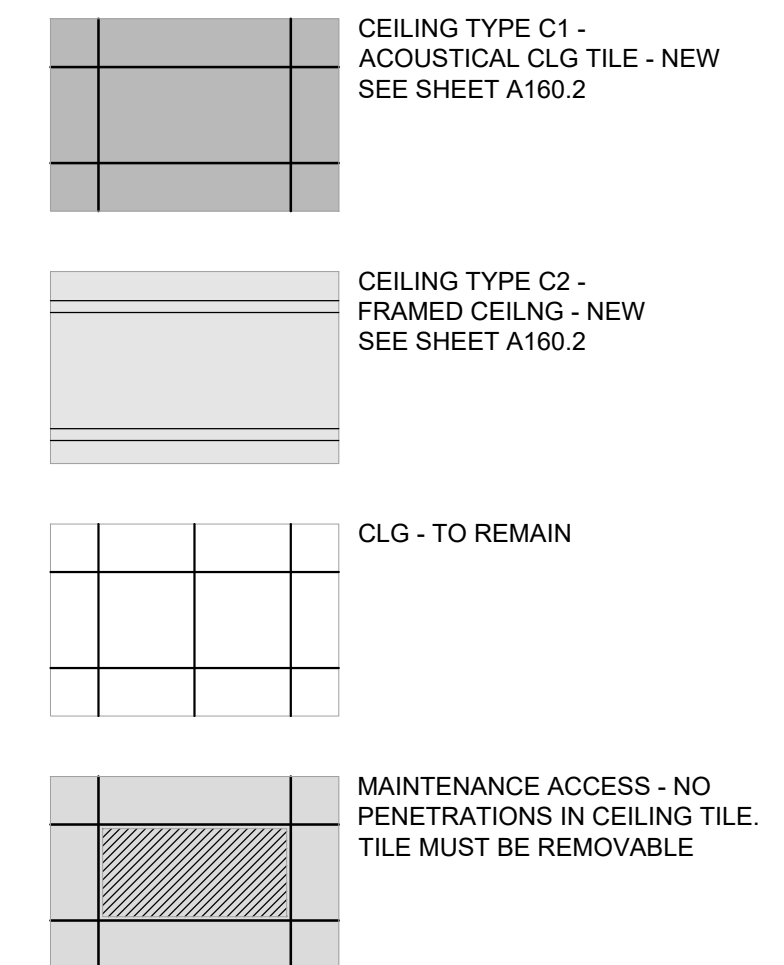
### GENERAL NOTES - CEILING PLAN

- SEE SPECIFICATION SECTION 02 4100 - DEMOLITION FOR DEMOLITION-RELATED NOTES.
- PROTECT EXISTING ELEMENTS NOT SCHEDULED NOR NECESSARY FOR REMOVAL TO ACCOMMODATE NEW WORK.
- REPRESENTATION OF EXISTING CEILING AS SHOWN HERE IS DIAGRAMMATIC. VERIFY EXISTING CEILING LAYOUT AND REMOVE CEILING SYSTEM COMPONENTS AS NECESSARY TO ACCOMMODATE NEW WORK AND TO RETAIN THE INTEGRITY OF THE EXST CEILING GRID TO REMAIN. SALVAGE ALL COMPONENTS FOR REINSTALLATION.
- SEE A121 FOR CEILING LEGEND.
- SEE A122 FOR LIGHT FIXTURE TYPES.

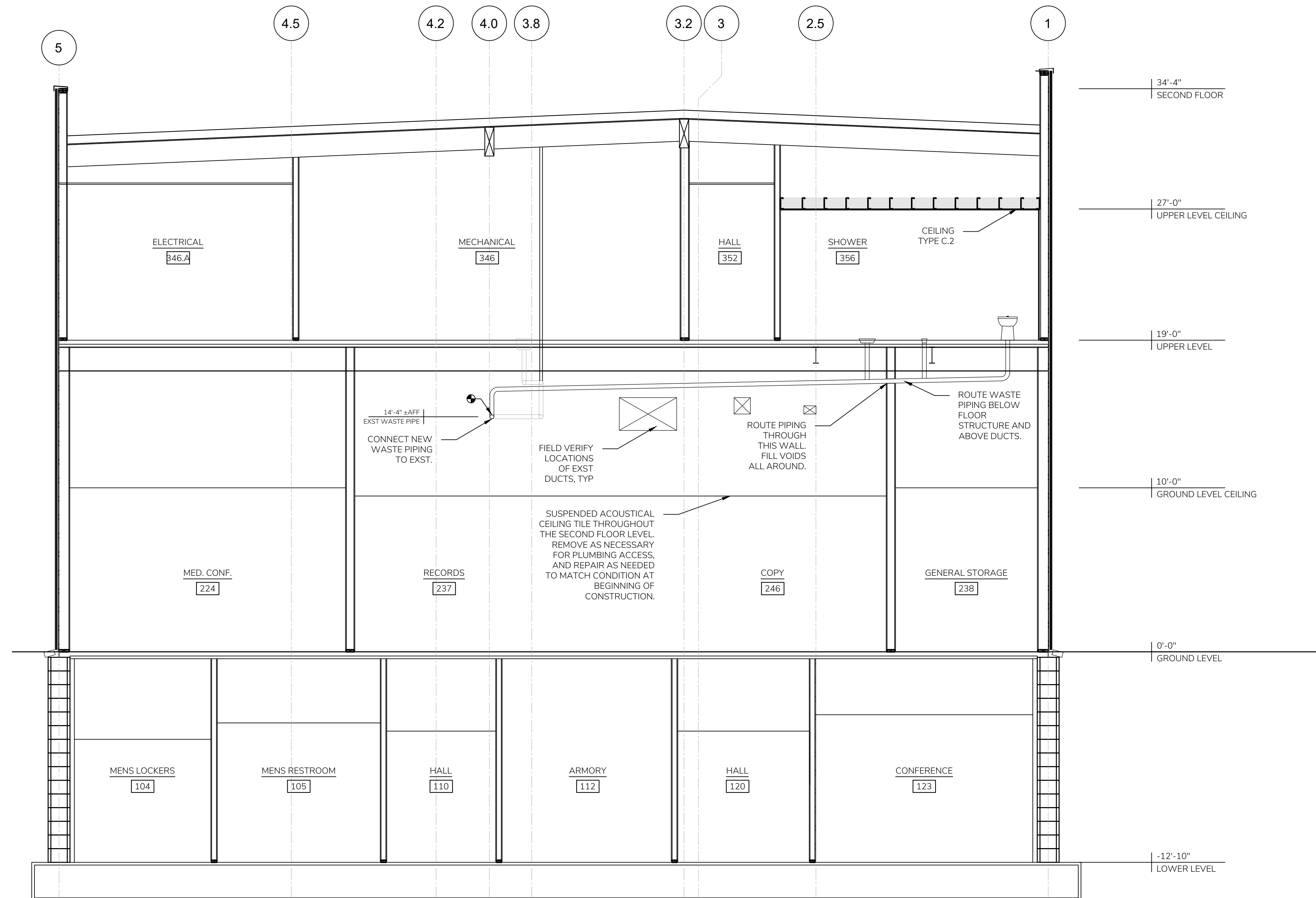
### KEYNOTES - CEILING PLAN

- CEILING TYPE C1.
- CEILING TYPE C2.
- ABOVE CEILING ACCESS AREA. DO NOT PROVIDE ELEMENTS, SUCH AS OCCUPANCY SENSORS, OR FIRE SPRINKLER HEADS IN CEILING TILES IN THIS AREA.
- SUPPLY OR RETURN GRILLE. SEE MECHANICAL.
- MECHANICAL UNIT ABOVE CEILING. SEE MECHANICAL.
- LIGHT FIXTURE. SEE ELECTRICAL.
- CEILING MOUNT ACCESS PANEL (12"x12"). VERIFY LOCATION WITH MECHANICAL.

### LEGEND - CEILING PLAN



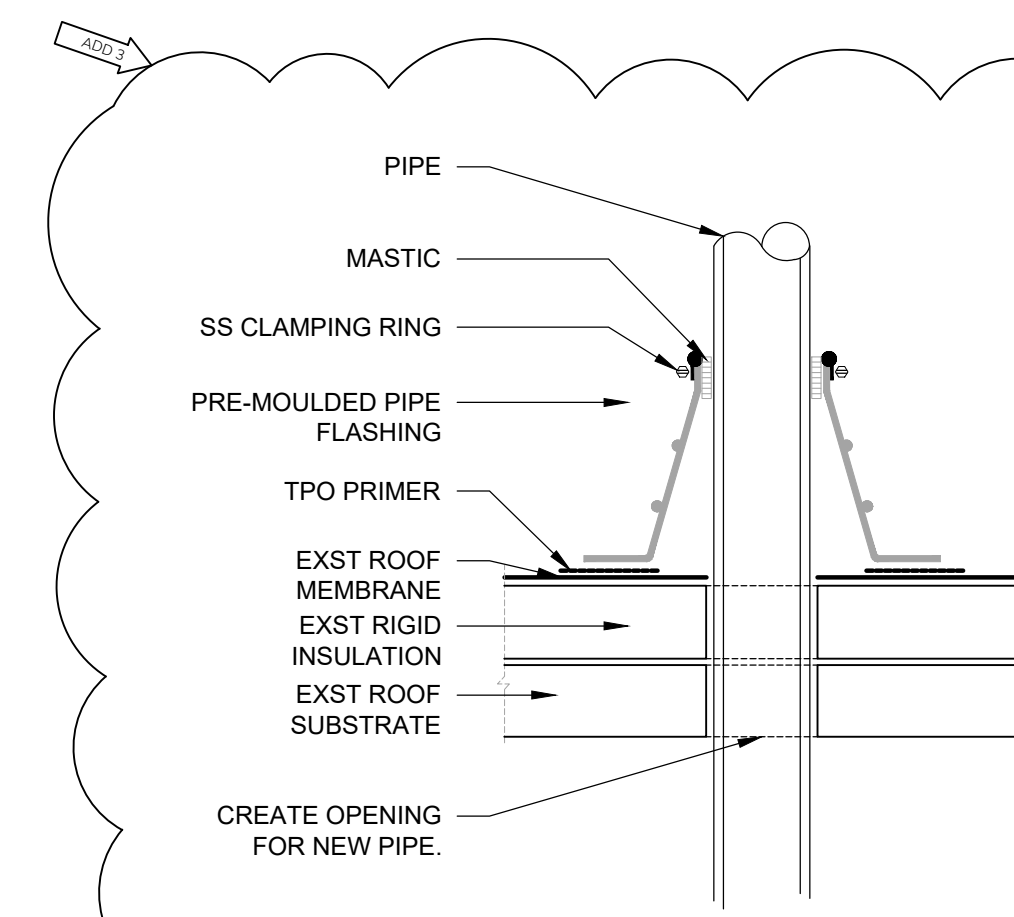




**GENERAL NOTES**

a. ---

Section 1  
1/4" = 1'-0"

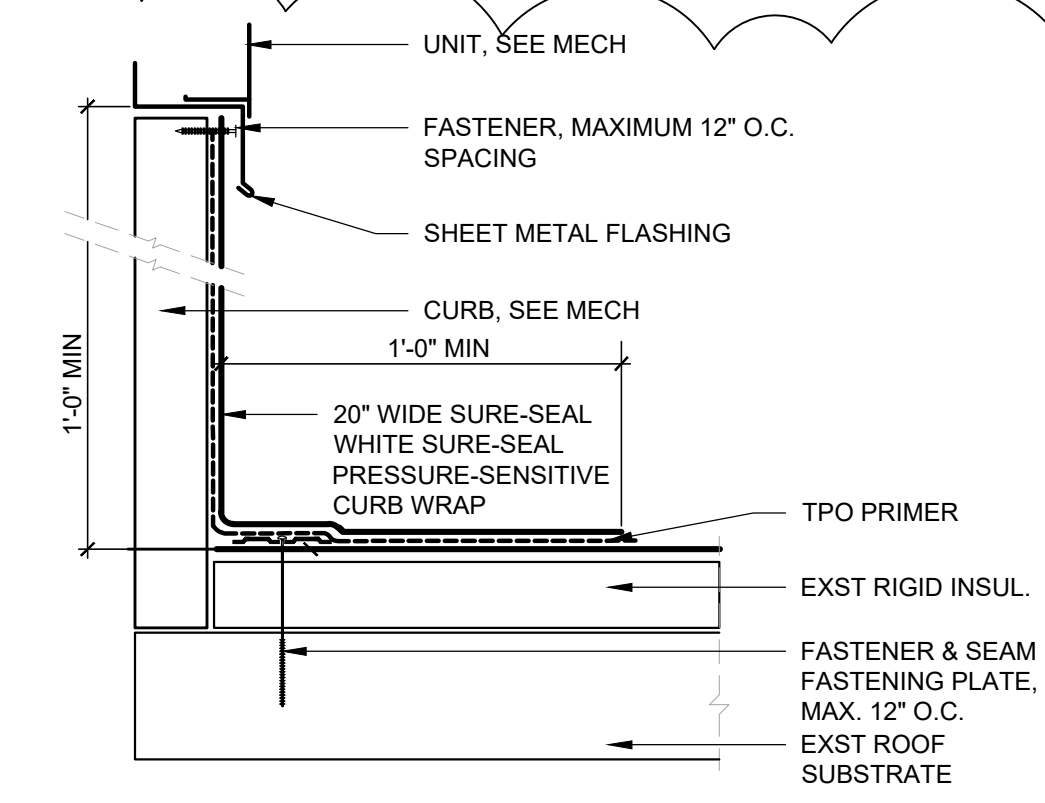


**NOTES:**

1. REMOVE ALL LEAD AND OTHER FLASHING BEFORE INSTALLING PRESSURE-SENSITIVE PIPE SEAL.
2. TEMPERATURE OF THE PIPE PENETRATION MUST NOT EXCEED 180°F (82°C).
3. PRE-MOLDED PIPE FLASHING MUST HAVE INTACT RIB AT THE TOP EDGE REGARDLESS OF PIPE DIAMETER.
4. DECK FLANGES OF THE PRESSURE-SENSITIVE PIPE SEAL SHALL NOT BE OVERLAPPED, CUT OR APPLIED OVER ANY ANGLE CHANGE.
5. WHEN A FIELD SPlice INTERSECTS A PIPE SEAL, APPLY SURE-WHITE LAP SEALANT ALONG THE EDGE OF THE MEMBRANE SPLICE COVERING THE EXPOSED SPLICE TAPE 1/2" (1.5cm) IN EACH DIRECTION FROM THE SPLICE INTERSECTION & OVERLAY WITH A 7"X9" (18cm X 23cm) T-JOINT COVER.
6. ON MECHANICALLY-FASTENED ROOFING SYSTEMS, ADDITIONAL MEMBRANE SECUREMENT IS REQUIRED.

Detail Reference: Carlisle TPO U-13D 2024  
3 = 1'-0"

**New Membrane to Exst**  
Subtitle 3



**NOTES:**

1. SEAM FASTENING PLATES/FASTENERS MAY BE INSTALLED INTO THE VERTICAL SUBSTRATE.
2. IF THE VERTICAL SPLICE ON THE CURB FLASHING IS NOT LOCATED AT THE CORNER, A 6" (15cm) WIDE PRESSURE-SENSITIVE UNCURED OR A T-JOINT FLASHING, IN CONJUNCTION WITH TPO PRIMER MUST BE CENTERED OVER FIELD SPLICE AT ANGLE CHANGE.
3. WHEN MECHANICAL FASTENERS ARE USED TO PENETRATE THE METAL COUNTER-FLASHING, USE EPMD WASHERS (BY OTHERS). APPLY WATER CUT-OFF MASTIC UNDER THE COUNTER-FLASHING OR APPLY SEALANT ON THE FASTENERS' HEADS

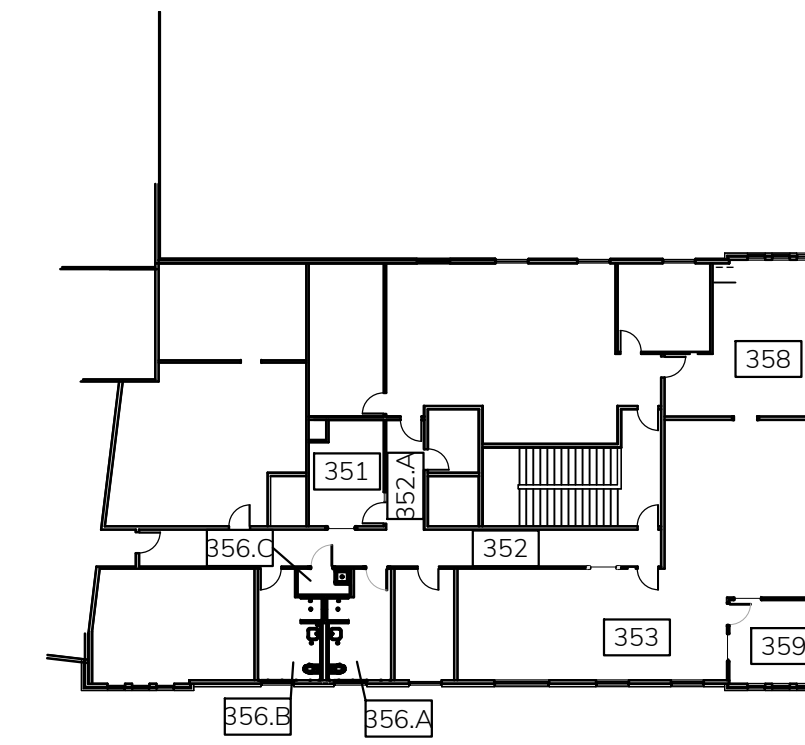
2 = 1'-0"

**Roof Repair at New Curb in Exst Roofing**  
Subtitle 2

Construction Documents  
City of Roseburg  
PSC 3rd Floor Improvements

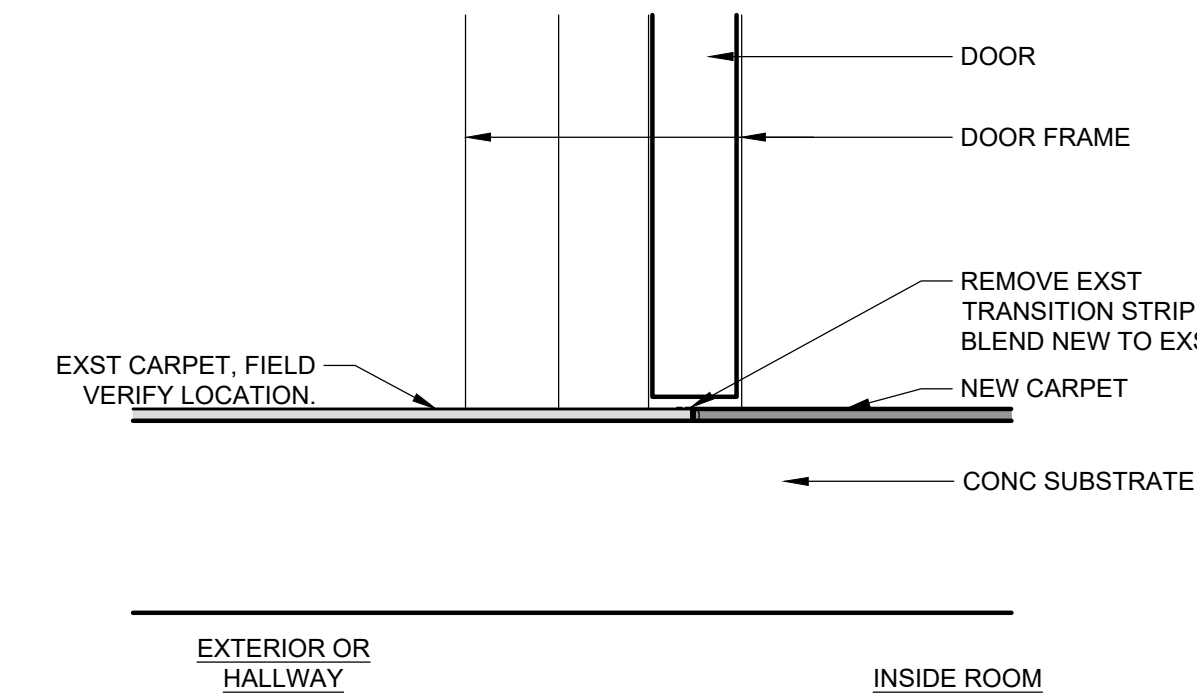
FINISH SCHEDULE

IDENTIFICATION		FLOOR		BASE		WALL				CEILING		CASEWK	NOTES	RM #				
RM #	LOCATION	MAT	FIN	MAT	FIN	NORTH		EAST		SOUTH		WEST		MAT	FIN	TYPE		
302	STAIR	EXST		EXST		EXST GB	EXST	EXST GB	EXST	EXST GB	EXST	EXST GB	EXST	EXST			④	302
346	MECHANICAL	EXST		EXST		EXST GB	EXST	EXST GB	EXST	EXST GB	EXST	EXST GB	EXST	EXST			⑤	346
346.A	ELECTRICAL	EXST		EXST		EXST GB	EXST	EXST GB	EXST	EXST GB	EXST	EXST GB	EXST	EXST			⑤	346.A
347	SERVER	EXST		EXST		EXST GB	EXST	EXST GB	EXST	EXST GB	EXST	EXST GB	EXST	EXST			⑤	347
348	OPEN OFFICE	EXST		EXST		EXST GB	EXST	EXST GB	EXST	EXST GB	EXST	EXST GB	EXST	EXST			④	348
349	MANAGER	EXST		EXST		EXST GB	EXST	EXST GB	EXST	EXST GB	EXST	EXST GB	EXST	EXST			④	349
350	STORAGE	EXST		EXST		EXST GB	EXST	EXST GB	EXST	EXST GB	EXST	EXST GB	EXST	EXST			④	350
351	CONTROL	EXST CARPET	EXST	EXST RB	EXST	EXST GB	EXST	EXST GB	EXST	EXST GB	EXST	EXST GB	EXST	EXST ACT	EXST		② ③	351
352	HALL	EXST CARPET	EXST	EXST RB	EXST	EXST GB	PAINT	EXST GB	PAINT	EXST GB	PAINT	EXST GB	PAINT	EXST ACT	EXST		③	352
352.A	HALL	EXST CARPET	EXST	EXST RB	EXST	EXST GB	PAINT	EXST GB	PAINT	EXST GB	PAINT	EXST GB	PAINT	EXST ACT	EXST			352.A
353	OPEN OFFICE 2	CAR TILE	FAC	RB	FAC	GB	PAINT	GB	PAINT	GB	PAINT	GB	PAINT	TILE	FAC	TYPE A		353
354	MEETING ROOM	EXST		EXST		EXST GB	EXST	EXST GB	EXST	EXST GB	EXST	EXST GB	EXST	EXST			④	354
356.A	SHOWER A	TILE	FAC	TILE	FAC	GB/TILE	PAINT/FAC	GB/TILE	PAINT/FAC	GB/TILE	PAINT/FAC	GB/TILE	PAINT/FAC	GB	PAINT	TYPE A	①	356.A
356.B	SHOWER B	TILE	FAC	TILE	FAC	GB/TILE	PAINT/FAC	GB/TILE	PAINT/FAC	GB/TILE	PAINT/FAC	EXST GB/TILE	PAINT/FAC	GB	PAINT	TYPE A	① ③	356.B
356.C	STORAGE	EXST CONC	EXST	RB	FAC	GB	PAINT	GB	PAINT	GB	PAINT	EXST GB	PAINT	OPEN TO STRUCT.	NA		③ ⑥	356.C
357	STORAGE	EXST		EXST		EXST GB	EXST	EXST GB	EXST	EXST GB	EXST	EXST GB	EXST	EXST			⑤	357
358	OPEN OFFICE 3	CAR TILE	FAC	RB	FAC	EXST GB	PAINT	EXST GB	PAINT	EXST GB	PAINT	EXST GB	PAINT	TILE	FAC	TYPE A		358
359	MANAGER OFFICE	CAR TILE	FAC	RB	FAC	GB	PAINT	GB	PAINT	GB	PAINT	GB	PAINT	TILE	FAC			359



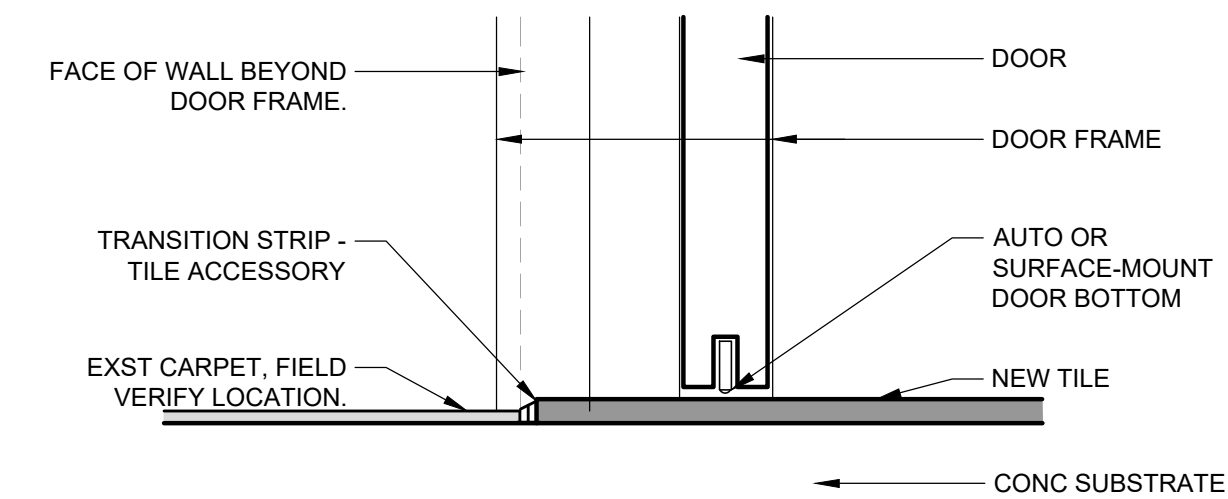
Key Plan

NTS



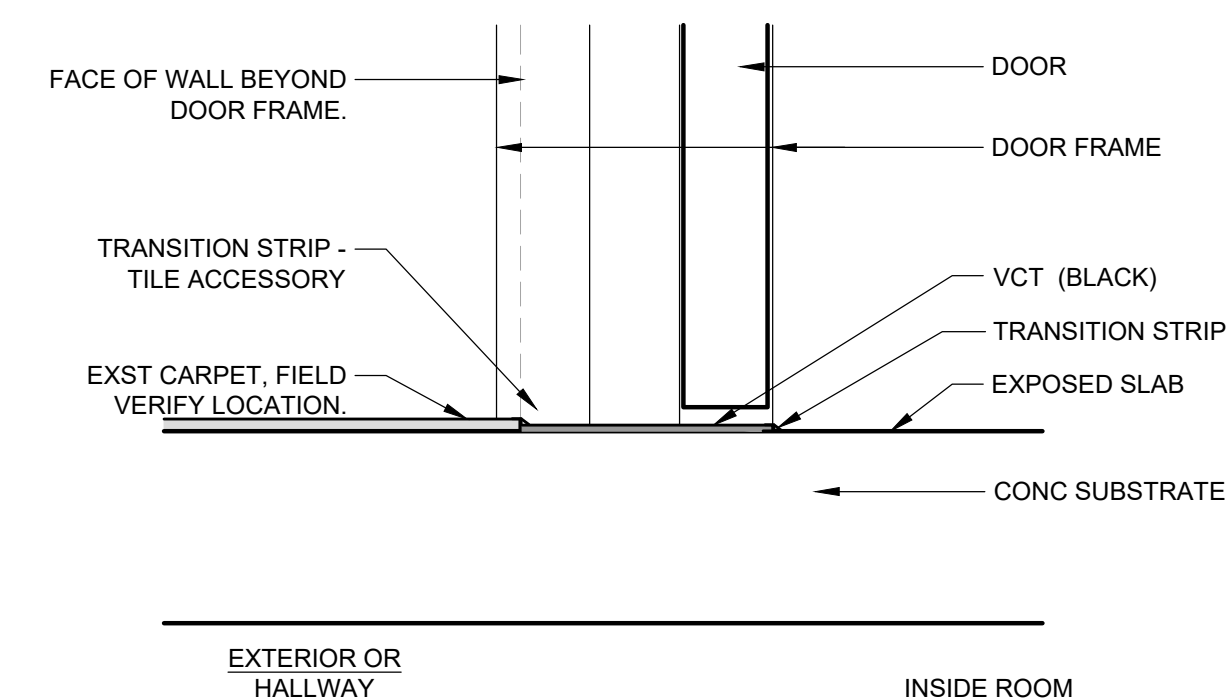
Transition Under Door 1A  
Floor Transition Diagrams - Section 1A

3" = 1'-0"



Transition at Hall Side 1B  
Floor Transition Diagrams - Section 1B

3" = 1'-0"



Transition with Filler Strip 1C  
Floor Transition Diagrams - Section 1C

3" = 1'-0"

GENERAL NOTES

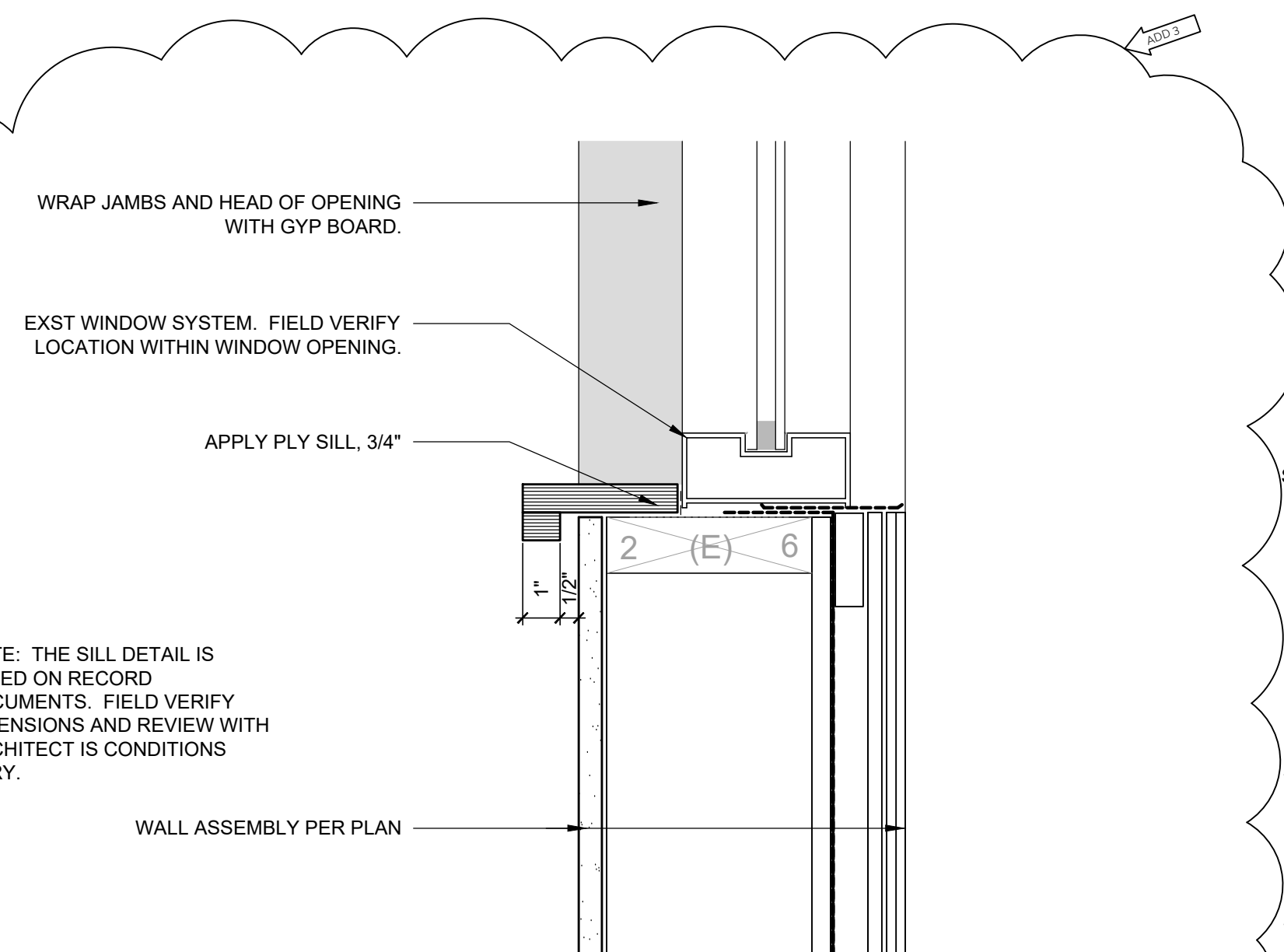
- a. KEYNOTE 2 ON THIS SHEET APPLIES TO ALL WORK ON THE SECOND FLOOR.

KEYNOTES - FINISH PLAN

- SEE INTERIOR ELEVATIONS FOR EXTENT OF WALL TILE AND GYP BOARD ON EACH WALL.
- AT WALL(S) WITH REPAIRED GYP BOARD, BLEND INTO EXST WALL FINISH/TEXTURE.
- MINIMIZE DISRUPTION TO EXST FINISH TO REMAIN AT HALLWAY SIDE OF OPENING FOR NEW DOOR OR RELITE.
- NO WORK ANTICIPATED IN THIS ROOM.
- THE ONLY WORK PLANNED FOR THIS ROOM IS PLUMBING, ELECTRICAL, AND/OR MECHANICAL. CLEAN UP WHEN COMPLETE, AND REPAIR ANY DAMAGE. IF ANY SEGMENT OF THE WALL REQUIRES PAINTING DUE TO WORK OF THIS CONTRACT, PAINT ENTIRE WALL.
- SEE 1C/A170 FOR FLOOR TRANSITION AT DOOR OPENING.

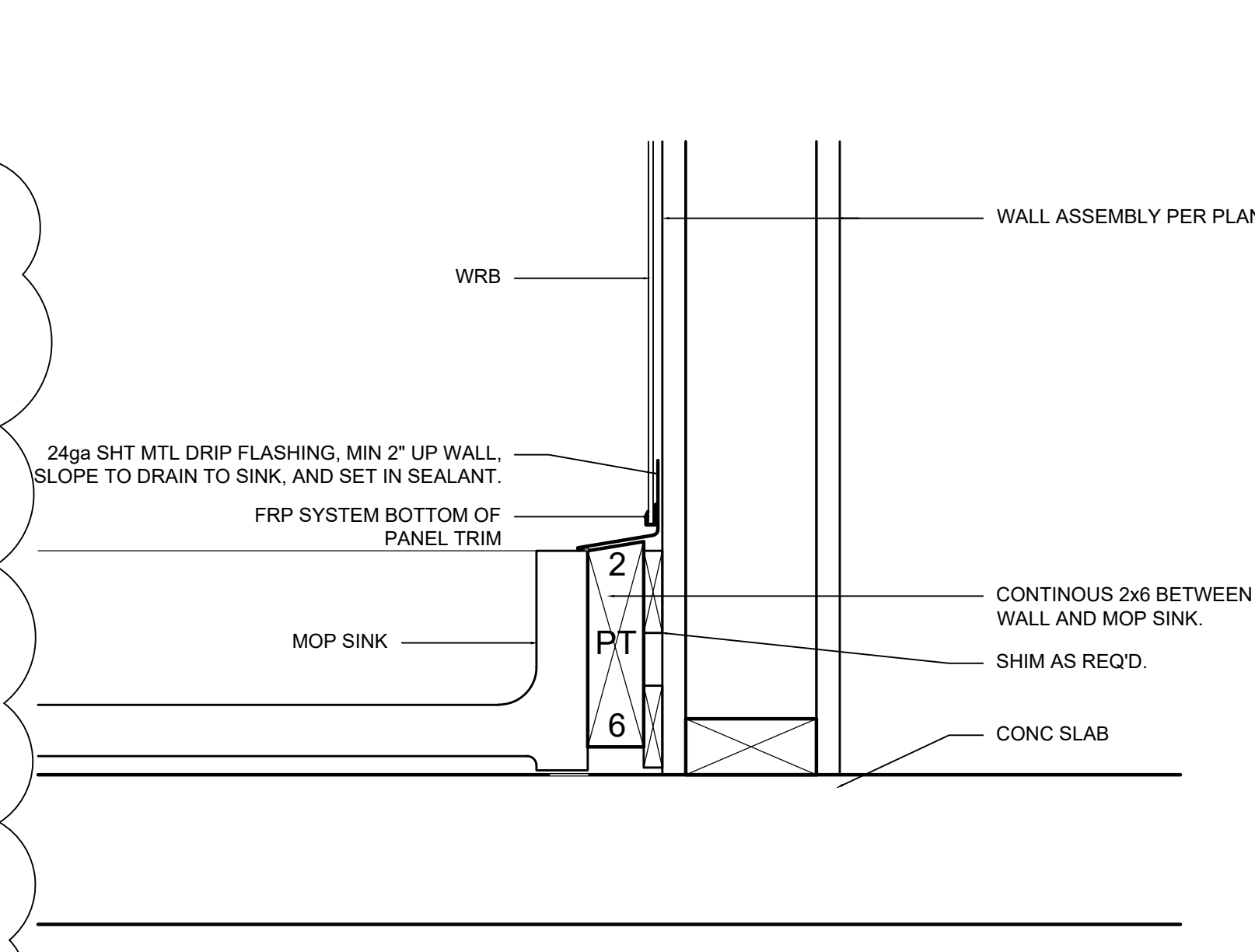
CASEWORK TYPES

- TYPE A
- CABINET P. LAM
  - COUNTER P. LAM
  - UPPER P. LAM (WHERE APPLICABLE)



Interior Finishes at Window Opening Section 3

3" = 1'-0"

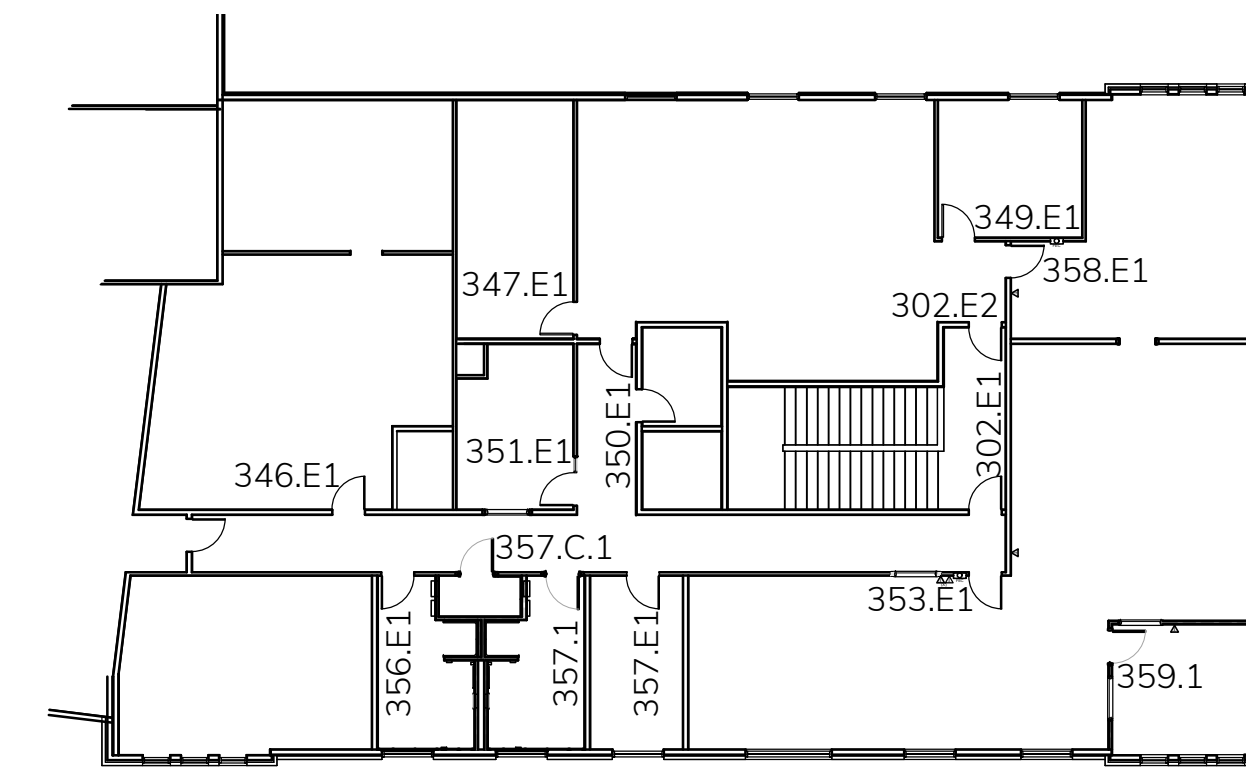


Flashing at Bottom of FRP Panel to Mop Sink Section 2

3" = 1'-0"

DOOR SCHEDULE

IDENTIFICATION			STATUS	PERFORMANCE			CHARACTERISTICS									HARDWARE GROUP	NOTES	MARK		
MARK	LOCATION			FIRE RATING (minute)		SMOKE	SOUND	THERMAL	NOM. DIMENSIONS			DOOR			FRAME					
	RM #	ROOM NAME		DOOR	FRAME				WIDTH	HEIGHT	TYPE	MATER.	FIN.	TYPE	MATER.				FIN.	
302.E1	302	STAIR	EXISTING	1 HR	1 HR	NA	NA	NA	3'-0"	7'-0"	B	WD	FAC	1	HM	PAINT	GROUP 5	--	302.E1	
351.E1	351	CONTROL	EXISTING	--	--	--	--	--	3'-0"	7'-0"	A	WD	FAC	1	HM	PAINT	--	--	351.E1	
353.E1	353	OPEN OFFICE 2	EXISTING	--	--	--	--	--	3'-0"	7'-0"	A	WD	FAC	1	HM	PAINT	GROUP 4	--	353.E1	
356.E1	356.B	SHOWER B	EXISTING	--	--	--	--	--	--	--	A	--	--	1	HM	PAINT	--	--	356.E1	
356.1	356.A	SHOWER A	NEW	--	--	--	YES	--	3'-0"	7'-0"	A	WD	--	1	HM	PAINT	GROUP 2	--	356.1	
356.C.1	356.C	STORAGE	NEW	--	--	--	NA	--	3'-0"	7'-0"	A	WD	--	1	HM	PAINT	GROUP 3	--	356.2	
357.E1	357	STORAGE	EXISTING	--	--	--	--	--	3'-0"	7'-0"	A	WD	FAC	1	HM	--	--	--	357.E1	
358.E1	358	OPEN OFFICE 3	EXISTING	--	--	--	--	--	--	--	A	--	--	1	HM	PAINT	--	--	358.E1	
359.1	359	MANAGER OFFICE	NEW	--	--	--	YES	--	3'-0"	7'-0"	A	WD	--	1	HM	PAINT	GROUP 1	--	359.1	
--	--	--	--	--	--	--	--	--	--	--	--	--	--	HM	--	--	--	--	--	

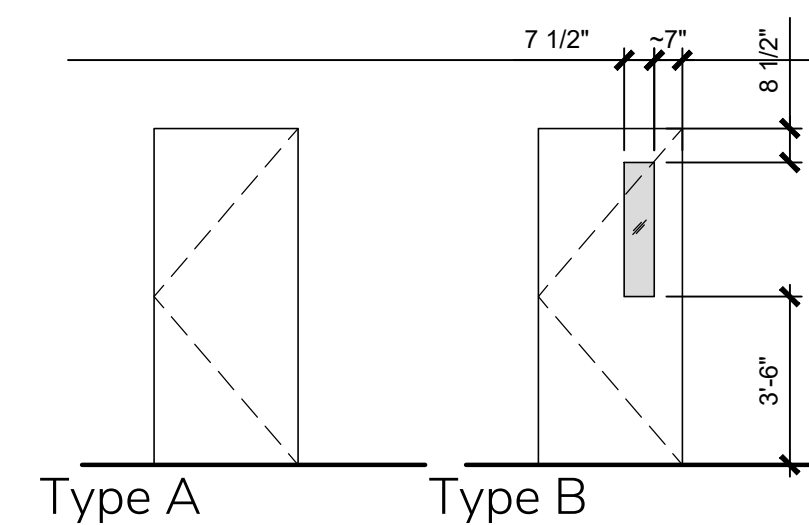
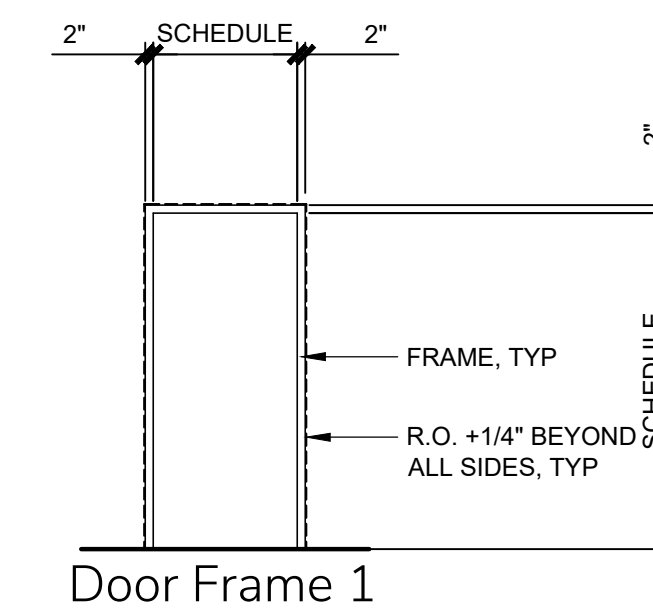
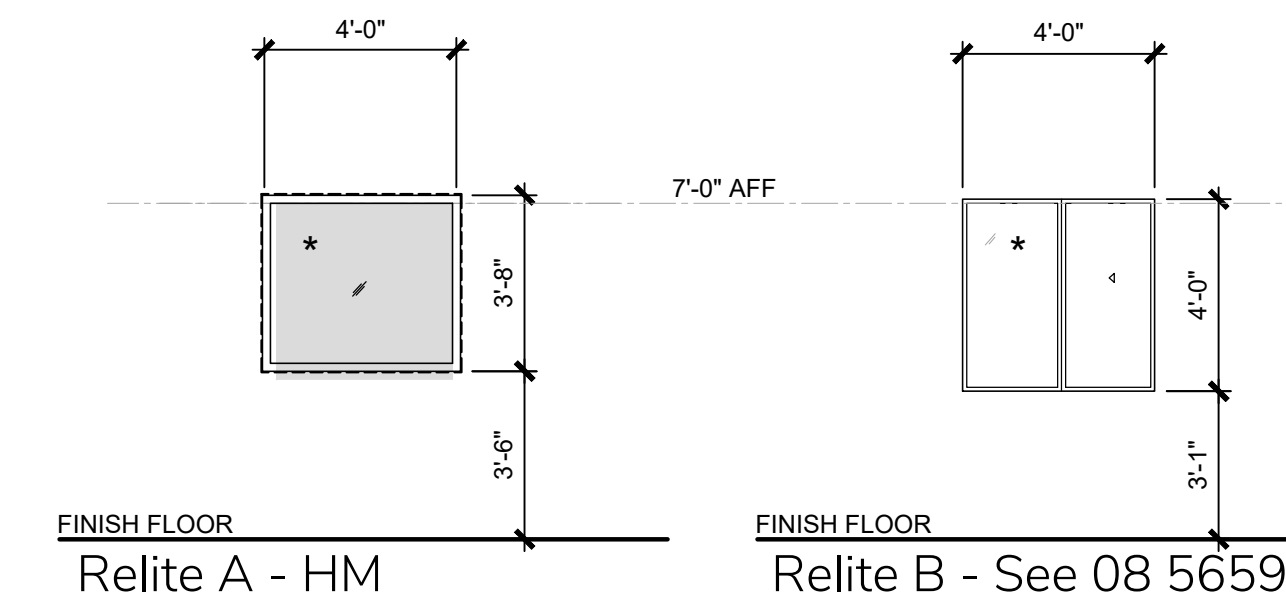


Key Plan

NTS

GENERAL NOTES

a. --



Frame, Door, and Relite Type

1/4" = 1'-0"

1