

C:\Users\15093\OneDrive - Fischer Project Solutions\Projects\Roseburg\026-Douglas Ave Pavement Repair\CAD\_WORKING\G-01 - COVER SHEET.dwg G-01 6/17/2024 5:52 PM 15093 24.1s (LMS Tech)



# 2024 SE DOUGLAS AVENUE PAVEMENT REPAIRS

## PROJECT NO. 24PW09

### JUNE 2024

#### INDEX OF DRAWINGS

##### GENERAL

1	G-01	COVER SHEET
2	G-02	LEGEND & ABBREVIATIONS
3	G-03	GENERAL NOTES

##### PAVEMENT REPAIR PLANS

4	C-01	SE DOUGLAS AVE - STA 1+00 TO STA 6+50
---	------	---------------------------------------

##### CURB RAMP PLANS

5	C-02	SE ROSE ST AND SE DOUGLAS AVE	(BID SCHEDULE A)
6	C-03	SE JACKSON ST AND SE DOUGLAS AVE	(BID SCHEDULE B)
7	C-04	SE MAIN ST AND SE DOUGLAS AVE	(BID SCHEDULE C)

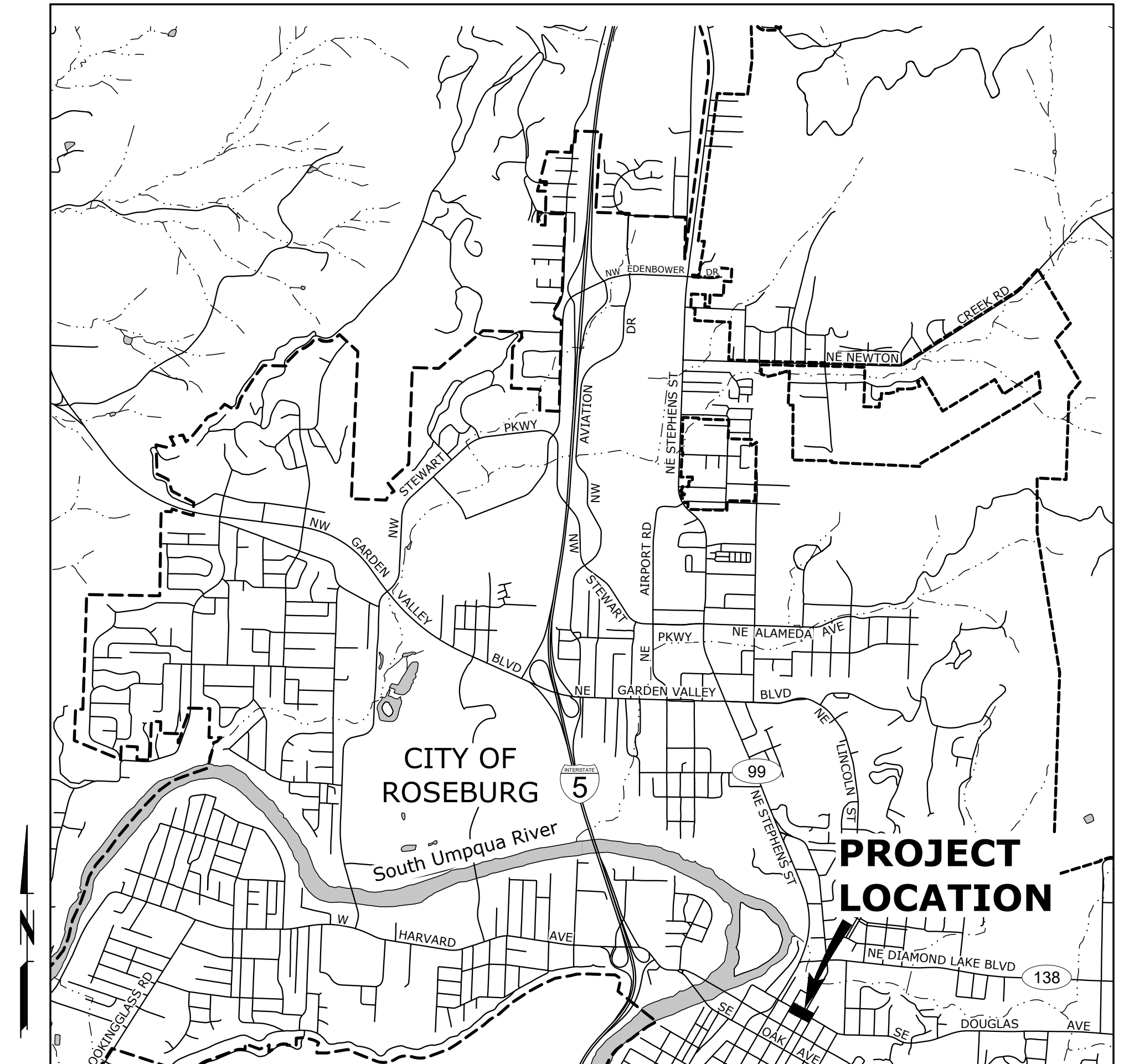
##### DETAILS

8	D-01	DETAILS
9	D-02	DETAILS
10	D-03	DETAILS

#### STANDARD DRAWINGS LIST

##### ODOT STANDARD DRAWINGS:

RD258	VALVE BOX AND OPERATOR EXTENSION ASSEMBLY
RD366	CONCRETE INLETS TYPE CG-1, CG-2
RD371	CONCRETE INLET BASE TYPE CG-3
RD700	CURBS
RD720	CURB LINE SIDEWALKS
RD722	SIDEWALK JOINTS AND TRANSITION PANELS
RD900	CURB RAMP COMPONENTS AND LEGEND
RD902	DETECTABLE WARNING SURFACE DETAILS
RD904	DETECTABLE WARNING SURFACE PLACEMENT FOR CURB RAMP
RD920	PARALLEL CURB RAMP
RD930	COMBINATION CURB RAMP
RD960	UNIQUE CURB RAMP
RD1010	INLET PROTECTION TYPE 2, 3, 6, 7, 10 AND 11
TM200	SIGN INSTALLATION DETAILS
TM500	PAVEMENT MARKING STANDARD DETAIL BLOCKS
TM501	PAVEMENT MARKING STANDARD DETAIL BLOCKS
TM502	PAVEMENT MARKING STANDARD DETAIL BLOCKS
TM503	PAVEMENT MARKING STANDARD DETAIL BLOCKS
TM515	PAVEMENT MARKERS
TM530	INTERSECTION PAVEMENT MARKINGS (CROSSWALK, STOP BAR & BIKE LANE STENCIL)
TM531	TURN ARROW MARKING DETAILS
TM539	MEDIAN AND LEFT TURN CHANNELIZATION DETAILS
TM560	ALIGNMENT LAYOUT: GENERAL
TM561	ALIGNMENT LAYOUT: LEFT TURN LANE, CENTERLINE & MEDIANS
TM677	SIGN MOUNTS
TM800	TABLES, ABRUPT EDGE, AND PCMS DETAILS
TM810	TEMPORARY PAVEMENT MARKING
TM820	TEMPORARY BARRICADES
TM821	TEMPORARY SIGN SUPPORTS
TM822	TEMPORARY SIGN SUPPORTS
TM841	INTERSECTION WORK ZONE DETAILS
TM842	SIGNALIZED INTERSECTION DETAILS
TM843	MULTI-LANE SIGNALIZED INTERSECTION DETAILS
TM844	TEMPORARY PEDESTRIAN ACCESSIBLE ROUTES
TM845	TEMPORARY SIDEWALK RAMPS



VICINITY MAP

SCALE: 1"=2,000'



5500 MEADOWS RD. #250 LAKE OSWEGO, OR 97035  
WWW.CENTURYWEST.COM 503.419.2130



Know what's below.  
Call before you dig.

ATTENTION: OREGON LAW REQUIRES THE CONTRACTOR TO FOLLOW THE RULES ADOPTED BY THE OREGON UTILITY NOTIFICATION CENTER. THOSE RULES ARE SET FORTH IN OAR 952-001-0010 THROUGH OAR 952-001-0090. THE CONTRACTOR MAY OBTAIN COPIES OF THE RULES BY CALLING THE UTILITY NOTIFICATION CENTER. (NOTE: THE TELEPHONE NUMBER FOR THE OREGON UTILITY NOTIFICATION CENTER IS 503-246-6699.)

# LEGEND

	EXISTING	PROPOSED
COMMUNICATION LINE	--- T --- T ---	
CONCRETE	—————	
GAS LINE	--- G --- G ---	
RIGHT-OF-WAY LINE (APPROX)	— — — — —	
SANITARY SEWER LINE	--- SS --- SS ---	
STORM SEWER LINE	--- STS --- STS ---	
WATER LINE	--- W --- W ---	
COMMUNICATION MANHOLE	⊕	
ELECTRICAL JUNCTION BOX	⊞	
FIRE HYDRANT	⊕	
GAS METER	⊞	
GUY WIRE	←	
LAMP POST	☀	
SANITARY SEWER CLEANOUT	⊙	
SANITARY SEWER MANHOLE	⊕	
SIGN	—	—
STORM SEWER INLET	⊞	
STORM SEWER MANHOLE	⊕	
TRASH BIN	⊞	
UTILITY POLE	⊞	
WATER METER	⊞	
WATER VALVE	⊙	

# ABBREVIATIONS

@	ABANDON(ED)	HMAC	HOT MIX ASPHALT CONCRETE	SQ	SQUARE
ABAN	ASPHALTIC CONCRETE	HDPE	HIGH DENSITY POLYETHYLENE	SQ FT	SQUARE FOOT
AC	ASPHALTIC CONCRETE PAVEMENT	HORIZ	HORIZONTAL	SS	SANITARY SEWER
ACP	AVERAGE DRY WEATHER FLOW	HWY	HIGHWAY	SSC	STAINLESS STEEL CLAMPS
ADWF	AGGREGATE	HP	HIGH PRESSURE	SSCO	SANITARY SEWER CLEANOUT
AGG	ALUMINUM	ID	IDENTIFICATION/INSIDE DIAMETER	SSMH	SANITARY SEWER MANHOLE
AL	AMERICAN NATIONAL STANDARDS INSTITUTE	IE	INVERT ELEVATION	SST	STAINLESS STEEL
ANSI	APPROXIMATE(LY)	IH	IRRIGATION HEAD	ST	STREET
APPROX	APPROVED	INSTL	INSTALL	STA	STATION
APPVD	AMERICAN PUBLIC WORKS ASSOCIATION	IR	IRON ROD	STD	STANDARD
APWA	ASSEMBLY	J	JUNCTION	STL	STEEL
ASSY	AIR RELEASE VALVE	LAT	LATERAL	STPR	STORM POINT REPAIR
ARV	AVENUE	LF	LINEAR FEET	S/W	SIDEWALK
AVE	AMERICAN WATER WORKS ASSOCIATION	LN	LANE	T/TEL	TELEPHONE
AWWA		LP	LOW PRESSURE	TB	THRUST BLOCK
		LS	LONG SLEEVE	TBD	TO BE DETERMINED
		LT	LEFT	TBM	TEMPORARY BENCH MARK
				TC	TOP OF CURB
BFILL	BACKFILL			TCM	TRAFFIC CONTROL MEASURES
BLDG	BUILDING	MAINT	MAINTAIN	TCP	TRAFFIC CONTROL PLAN
BLVD	BOULEVARD	MATL(S)	MATERIAL(S)	TS	TRAFFIC SIGNAL
BLVD	BENCHMARK	MAX	MAXIMUM	TEMP	TEMPORARY
BM	BOTTOM	MFR(S)	MANUFACTURER(S)	THK	THICK/THICKNESS
BTM	BETWEEN	MH(S)	MANHOLE(S)	THRU	THROUGH
BETW		MHMAC	MINOR HOT MIX ASPHALT CONCRETE	TV	TELEVISION
		MIN	MINIMUM	TYP	TYPICAL
		MJ	MECHANICAL JOINT		
C/L	CENTER LINE	MON(S)	MONUMENT(S)	USDOT	UNITED STATES DEPARTMENT OF TRANSPORTATION
CB	CATCH BASIN	MUTCD	MANUAL ON UNIFORM TRAFFIC CONTROL DEVICES		
CCTV	CLOSED CIRCUIT TELEVISION	NB	NORTHBOUND	VERT	VERTICAL(LY)
CDF	CONTROLLED DENSITY FILL	NO	NUMBER	VCP	VITRIFIED CLAY PIPE
CI	CAST IRON	NOM	NOMINAL		
CIPP	CURED IN PLACE PIPE	NTS	NOT TO SCALE	W	WATER
CG	CURB/GUTTER			WB	WESTBOUND
CL	CLASS	OC	ON CENTER	WM	WATER METER
CLR	CLEAR	OD	OUTSIDE DIAMETER	WZ	WORK ZONE
CLSM	CONTROLLED LOW STRENGTH MATERIAL	ODOT	OREGON DEPARTMENT OF TRANSPORTATION	W/	WITH
CND	CONDUIT	OVHD	OVERHEAD LINE	W/IN	WITHIN
CO	CLEANOUT			W/O	WITHOUT
COMM	COMMUNICATIONS	P	POWER		
CONC	CONCRETE	PC	POINT OF CURVATURE		
CONN	CONNECTION	PCC	POINT OF COMPOUND CURVATURE		
CONST	CONSTRUCT/CONSTRUCTION	PCMS	PORTABLE CHANGEABLE MESSAGE SIGN		
COORD	COORDINATE	PCVC	POINT OF CURVATURE ON VERTICAL CURVE		
COP	COPPER	PE	PLAIN END		
COR	CITY OF ROSEBURG	PED	PEDESTRIAN		
CP	CONCRETE PIPE	PERF	PERFORATED		
CPLG	COUPLING	PERM	PERMANENT		
CR	CRUSHED ROCK	PI	POINT OF INTERSECTION		
CT	COURT	PIVC	POINT OF INTERSECTION ON VERTICAL CURVE		
CHKV	CHECK VALVE	PK	PARKING		
CY	CUBIC YARD	P/L	PROPERTY LINE		
		PL	PLACE		
		PRESS	PRESSURE		
		PROP	PROPOSED		
		PS	PUMP STATION		
		PSI	POUNDS PER SQUARE INCH		
		PT	POINT OF TANGENCY		
		PV	PLUG VALVE		
		PVC	POLYVINYL CHLORIDE		
		PVMT	PAVEMENT		
		PW	PUBLIC WORKS		
		R	RADIUS		
		R&R	REMOVE AND REPAIR		
		RCP	REINFORCED CONCRETE PIPE		
		RD	ROAD/ROOF DRAIN		
		RDCR	REDUCER		
		REHAB	REHABILITATE/REHABILITATION		
		REINF	REINFORCE(D)(ING)(MENT)		
		REQ'D	REQUIRED		
		RESTR	RESTRAIN(ED)		
		RET	RETAINING		
		RT	RIGHT		
		R/W	RIGHT OF WAY		
		SB	SOUTHBOUND		
		SCHED	SCHEDULE		
		SD	STORM DRAIN		
		SDMH	STORM DRAIN MANHOLE		
		SHT(S)	SHEET(S)		
		SLP	SLOPE		
		SPECS	SPECIFICATIONS		
		SPL	SPOOL		
		SPR	SANITARY POINT REPAIR		

C:\Users\15093\OneDrive - Fischer Project Solutions\Projects\Roseburg\026-Douglas Ave Pavement Repair\CAD\WORKING\G-02-LEGEND & ABBREVIATIONS.dwg, 6/18/2024 7:33 AM, Anthony Fischer

NO.	DATE	BY	REVISION

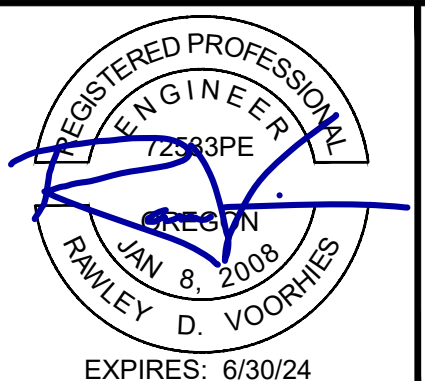
SCALE	
PLAN	
	HORIZ.
PROFILE	
	VERT.
ONE INCH (REF)	

DESIGNED:  
R. VOORHIES

DRAWN:  
A. FISCHER

CHECKED:  
R. VOORHIES

CWE PROJECT NO.  
40193.0XX.01



**CENTURY WEST**  
ENGINEERING

5500 MEADOWS RD. #250 | LAKE OSWEGO, OR 97035  
WWW.CENTURYWEST.COM | 503.419.2130

**900 SE DOUGLAS AVE.**  
**ROSEBURG, OR 97470**

**CITY PROJECT #: 24PW09**  
**CITY PROJECT MANAGER**  
**RYAN HERINCKX**

**LEGEND & ABBREVIATIONS**

**2024 SE DOUGLAS AVENUE PAVEMENT REPAIRS**  
**JUNE 2024**

SHEET NO.  
**G-02**

**2 OF 10**

## GENERAL NOTES

- ALL WORK AND MATERIALS SHALL CONFORM TO THE 2021 EDITION OF THE OREGON CHAPTER APWA STANDARD SPECIFICATIONS FOR PUBLIC WORKS CONSTRUCTION.
- IT SHALL BE THE RESPONSIBILITY OF THE CONTRACTOR TO OBTAIN AND PAY FOR ALL APPLICABLE PERMITS, LICENSES AND CERTIFICATES RELATIVE TO THE TRADES TO COMPLETE THE PROJECT AND FOR THE USE OF SUCH WORK WHEN COMPLETED. COMPLIANCE SHALL BE AT ALL LEVELS, FEDERAL, STATE, COUNTY, AND LOCAL, RELATING TO THE PERFORMANCE OF THE WORK.
- IT SHALL BE THE RESPONSIBILITY OF THE CONTRACTOR TO VERIFY ALL UTILITY LOCATIONS PRIOR TO CONSTRUCTION AND ARRANGE FOR THE RELOCATION OF ANY UTILITIES IN CONFLICT WITH THE PROPOSED CONSTRUCTION. THE LOCATIONS, DEPTH AND DESCRIPTION OF EXISTING UTILITIES SHOWN WERE COMPILED FROM AVAILABLE RECORDS. THE ENGINEER OR UTILITY COMPANIES DO NOT GUARANTEE THE ACCURACY OR THE COMPLETENESS OF SUCH RECORDS. ADDITIONAL UTILITIES, OTHER THAN THOSE SHOWN, MAY EXIST WITHIN THE WORK AREA.
- OREGON LAW REQUIRES THAT THE RULES ADOPTED BY OREGON UTILITY NOTIFICATION CENTER BE FOLLOWED. THOSE RULES ARE SET FORTH IN OAR 952-001-0010 THROUGH OAR 952-001-0090. YOU MAY OBTAIN COPIES OF THE RULES BY CALLING THE CENTER OR ACCESSING VIA INTERNET AT WWW.CALLBEFOREYOUTDIG.ORG. CALL BEFORE YOU DIG - 811.
- THE CONTRACTOR SHALL MAKE PROVISIONS TO KEEP ALL EXISTING UTILITIES IN SERVICE AND PROTECT THEM DURING CONSTRUCTION. CONTRACTOR SHALL IMMEDIATELY REPAIR OR REPLACE ANY DAMAGED UTILITIES USING MATERIALS AND METHODS APPROVED BY THE UTILITY OWNER. NO SERVICE INTERRUPTIONS SHALL BE PERMITTED WITHOUT PRIOR WRITTEN AGREEMENT WITH THE UTILITY PROVIDER.
- CONTRACTOR SHALL NOTIFY THE ENGINEER AND THE CITY OF ROSEBURG 48 HOURS IN ADVANCE OF STARTING CONSTRUCTION AND 24 HOURS BEFORE RESUMING WORK AFTER SHUTDOWNS, EXCEPT FOR NORMAL RESUMPTION OF WORK FOLLOWING SATURDAYS, SUNDAYS, OR HOLIDAYS.
- CONTRACTOR SHALL REMOVE AND DISPOSE OF CONCRETE, ASPHALT CEMENT, TOPSOIL, AND OTHER MATERIAL IN THE WORK LIMITS AND WHERE INDICATED ON THE PLANS. MATERIAL SHALL BE DISPOSED OF IN SUCH A MANNER AS TO MEET ALL APPLICABLE REGULATIONS. CONTRACTOR SHALL ENSURE RECIPIENTS OF FILL MATERIALS REMOVED OFFSITE ARE PERMITTED TO RECEIVE SAID MATERIALS REGARDLESS OF THE RECEIVING JURISDICTION.
- UNLESS OTHERWISE APPROVED BY THE ENGINEER, LIMIT HOURS WORK RELATED TO PAVEMENT REPAIRS AND RESTRIPIING TO 7:00PM TO 9:00AM, SUNDAY-THURSDAY NIGHT SHIFT. ALL OTHER WORK SHALL BE LIMITED TO 6:00AM TO 9:00PM MONDAY - FRIDAY DAY SHIFT UNLESS INDICATED OTHERWISE. SEE SECTION 00220 OF THE SPECIAL PROVISIONS, INCLUDING 00220.40(E) FOR ALLOWABLE LANE CLOSURES AND ADDITIONAL RESTRICTIONS.
- THE CONTRACTOR SHALL KEEP AN APPROVED SET OF PLANS ON THE PROJECT SITE AT ALL TIMES.
- IT IS THE CONTRACTOR'S RESPONSIBILITY TO VISIT THE SITE AND VERIFY ALL EXISTING CONDITIONS BEFORE THE START OF WORK. THE CONTRACTOR SHALL TAKE ALL NECESSARY FIELD MEASUREMENTS AND OTHERWISE VERIFY ALL DIMENSIONS AND EXISTING CONSTRUCTION CONDITIONS INDICATED AND/OR SHOWN ON THE PLANS. SHOULD ANY ERROR OR INCONSISTENCY EXIST, THE CONTRACTOR SHALL NOT PROCEED WITH THE WORK AFFECTED UNTIL REPORTED TO THE ENGINEER FOR CLARIFICATION OR CORRECTION.
- ANY INSPECTION BY THE CITY, COUNTY, STATE, FEDERAL AGENCY OR ENGINEER SHALL NOT, IN ANY WAY, RELIEVE THE CONTRACTOR FROM ANY OBLIGATION TO PERFORM THE WORK IN COMPLIANCE WITH THE APPLICABLE CODES, REGULATIONS, CITY STANDARDS AND PROJECT CONTRACT DOCUMENTS.
- CONTRACTOR SHALL COORDINATE ALL IMPROVEMENT LIMITS WITH THE ENGINEER ONSITE PRIOR TO BEGINNING WORK. NO PAYMENT WILL BE MADE FOR EXTRA WORK THAT IS CONSTRUCTED BEYOND THE APPROVED CONSTRUCTION LIMITS.
- AT THE END OF EACH WORK DAY, THE CONTRACTOR SHALL CLEAN UP THE PROJECT AREA AND LEAVE IT IN A NEAT AND SECURED MANNER. UPON COMPLETION OF THE PROJECT, THE CONTRACTOR SHALL LEAVE THE PROJECT AREA FREE FROM ALL DEBRIS AND UNUSED MATERIALS.
- PROPERTY LINES SHOWN ON PLAN SHEETS ARE APPROXIMATE AND FOR GENERAL DELINEATION PURPOSES ONLY AND ARE NOT MEANT TO REPRESENT THE ACTUAL PROPERTY BOUNDARIES.
- THE CONTRACTOR SHALL BE SOLELY RESPONSIBLE FOR COMPLYING WITH ALL CONSTRUCTION SAFETY, HEALTH AND OTHER RULES AND REGULATIONS FROM OSHA, DEQ, STATE, AND LOCAL REGULATING AGENCIES FOR SAFETY AND INSTALLATION OF THE WORK INCLUDING, BUT NOT LIMITED TO, SHORING, BRACING, ERECTION/INSTALLATION, FALL PROTECTION, GUARDRAILS, ETC.
- REPLACE CURBS, SIDEWALKS, AND/OR DRIVEWAY APRONS THAT ARE DAMAGED AS A RESULT OF CONSTRUCTION OPERATIONS. REPLACE FULL SECTIONS TO THE NEAREST EXISTING CONSTRUCTION JOINT. REPLACEMENT WILL BE CONSIDERED INCIDENTAL TO THE WORK.
- ALL CONSTRUCTION SURVEY AND STAKING REQUIRED FOR THE PROJECT SHALL BE PROVIDED BY THE CONTRACTOR. THE CONTRACTOR SHALL DEVELOP AND MAKE ALL DETAIL SURVEYS NECESSARY FOR LAYOUT AND CONSTRUCTION INCLUDING EXACT COMPONENT LOCATION (SUCH AS EXISTING STRIPING, SYMBOLS, DETECTOR LOOPS, ETC), WORKING POINTS, LINES, AND ELEVATIONS. PRIOR TO CONSTRUCTION, THE FIELD LAYOUT SHALL BE REVIEWED BY THE ENGINEER. THE CONTRACTOR SHOULD ASSUME THAT ALL SURVEY STAKING IS TO BE COMPLETED USING INFORMATION CONTAINED IN THE PLANS AND SPECIFICATIONS OR FROM EXISTING ONSITE FEATURES. INFORMATION OR CLARIFICATION BY THE ENGINEER MAY BE AVAILABLE UPON REQUEST, BUT IS NOT GUARANTEED.
- THE CONTRACTOR SHALL HAVE THE RESPONSIBILITY TO CAREFULLY PRESERVE BENCHMARKS, REFERENCE POINTS AND STAKES, AND IN THE CASE OF DESTRUCTION THEREOF BY THE CONTRACTOR RESULTING FROM ITS NEGLIGENCE, THE CONTRACTOR SHALL BE CHARGED WITH THE EXPENSE AND DAMAGE RESULTING THEREOF AND SHALL BE RESPONSIBLE FOR ANY MISTAKES THAT MAY BE CAUSED BY THE UNNECESSARY LOSS OR DISTURBANCE OF SUCH MARKS, REFERENCE POINTS AND STAKES.
- CONTRACTOR IS RESPONSIBLE FOR SURVEYING AND REPLACING ALL MONUMENTS DISTURBED BY PAVING OR CONCRETE WORK PURSUANT TO ORS 209.150, AND FOR PREPARING AND FILING A RECORD OF SURVEY TO THE COUNTY SURVEYOR'S OFFICE PURSUANT TO ORS 209.250.
- COORDINATE WITH OTHER CONTRACTORS WITHIN THE PROJECT LIMITS COMPLETING WORK. IF APPLICABLE, SEE THE GENERAL CONDITIONS OF THE SPECIFICATIONS FOR CONTACT INFORMATION.

- PROTECT FRESHLY POURED CONCRETE CURBS AND SIDEWALK FROM VANDALISM OR OTHER DAMAGE FOR A MINIMUM OF TWENTY-FOUR (24) HOURS OR UNTIL CURED ENOUGH TO SUPPORT TYPICAL USE, WHICHEVER IS LONGER. ANY CURB OR SIDEWALK DAMAGED BY VANDALISM OR OTHER CAUSES SHALL BE REPLACED AT NO COST TO THE CITY.
- CONTRACTOR SHALL RESTORE ALL DISTURBED LANDSCAPING AND IRRIGATION. PLACE TOPSOIL, AGGREGATE, AND/OR BARK MULCH WHERE SHOWN.
- FURNISH AND PLACE DOWELS TO JOIN NEW CONCRETE WALKS, CURBS AND DRIVEWAYS TO EXISTING CONCRETE AS DIRECTED.

## EROSION CONTROL NOTES

- ALL EROSION AND SEDIMENT CONTROL MEASURES ARE TO BE PLACED PRIOR TO ANY DISTURBANCE CAUSED BY GRADING AND SHALL CONFORM TO THE REQUIREMENTS OF STATE AND FEDERAL REGULATIONS AND TO THE SPECIFIC REQUIREMENTS CONTAINED IN THE SPECIFICATIONS.
- EXISTING INLETS AND CATCH BASINS THAT MAY RECEIVE RUNOFF FROM THE PROJECT AREA ARE TO BE PROTECTED PRIOR TO CONSTRUCTION. ALL INLETS AND CATCH BASINS ARE TO BE PROTECTED IN ACCORDANCE WITH ODOT/APWA STANDARDS FOR EROSION AND SEDIMENT CONTROL.
- IN THE EVENT OF ANY EROSION CONTROL MEASURE FAILURE, IMMEDIATE ACTION SHALL BE TAKEN TO REPAIR, REPLACE, OR CONSTRUCT ADDITIONAL MEASURES AS REQUIRED TO ENSURE ADEQUATE EROSION CONTROL PROTECTION.
- ALL EROSION CONTROL MEASURES SHALL BE INSPECTED REGULARLY, PARTICULARLY DURING AND AFTER STORM EVENTS, TO ENSURE ADEQUATE PERFORMANCE. MAINTENANCE AND INSPECTION LOGS SHALL REMAIN ON SITE AND SHALL BE AVAILABLE TO THE CITY OF ROSEBURG UPON REQUEST.
- ALL PESTICIDES, PETROLEUM PRODUCTS, CHEMICALS OR OTHER POTENTIAL POLLUTANTS SHALL BE ADMINISTERED RESPONSIBLY WITH DISPOSAL AND SPILLS HANDLED IN ACCORDANCE WITH ALL LOCAL, STATE AND FEDERAL REQUIREMENTS.

## PAVING NOTES

- TRIM VEGETATION AS NEEDED PRIOR TO PAVING TO ENSURE ALL VEGETATION IS CLEAR OF PAVING OPERATIONS.
- ALL EDGES REMAINING AFTER PAVEMENT REMOVAL SHALL BE VERTICAL TO ACCEPT THE SUCCEEDING FULL DEPTH ASPHALT LIFT.
- ALL JOINTS BETWEEN NEW ASPHALTIC CONCRETE AND EXISTING OR NEW ASPHALTIC CONCRETE AND CONCRETE SHALL BE TACKED AND SAND SEALED.
- PROVIDE MINOR ADJUSTMENTS IN GRADE OF NEW A.C. AS REQUIRED TO FACILITATE DRAINAGE INTO STORM DRAINAGE FACILITIES. NO PONDING SHALL OCCUR BETWEEN CATCH BASINS FOLLOWING CONSTRUCTION.
- THE MAXIMUM EXPOSURE AT DRIVEWAYS SHALL BE 3/4-INCH.
- WHERE PAVEMENT IS TO BE REPLACED TO MATCH EXISTING GRADE ADJACENT TO EXISTING CURB, CONTRACTOR SHALL MARK EXISTING CURB FLOW LINE WITH PAINT PRIOR TO A.C. SURFACING REMOVAL.
- COORDINATE WITH CITY STAFF FOR IN-GROUND VALVE, MANHOLE OR VAULT ADJUSTMENT OF FRANCHISE UTILITY ASSETS.

## SIGNING AND STRIPING NOTES

- ALL SIGNING AND PAVEMENT MARKING MATERIAL AND WORKMANSHIP SHALL CONFORM TO THE REQUIREMENTS AND SPECIFICATIONS OF THE MANUAL ON UNIFORM TRAFFIC CONTROL DEVICES (MUTCD), AND 2021 APWA STANDARD SPECIFICATIONS.
- LOCATIONS SHOWN FOR EXISTING SIGNS AND PAVEMENT MARKINGS ARE APPROXIMATE. CONTRACTOR SHALL REPLACE EXISTING PAVEMENT MARKINGS WITH SAME SIZE, STYLE AND LOCATION, UNLESS OTHERWISE SPECIFIED. ALL TRAFFIC SIGN POSITIONS AND PAVEMENT MARKINGS LAYOUT SHALL BE REVIEWED IN THE FIELD BY THE ENGINEER PRIOR TO INSTALLATION.
- ALL LONGITUDINAL STRIPING SHALL BE PAINT. ALL PAVEMENT MARKINGS, INCLUDING CROSSWALKS, STOP BARS, BIKE SYMBOLS, AND ARROWS, AND STORM INLET MARKINGS SHALL BE THERMOPLASTIC. CONTRACTOR IS RESPONSIBLE FOR LAYOUT AND STAKING OF ALL STRIPING AND PAVEMENT MARKINGS.
- CONTRACTOR SHALL FIELD VERIFY AND DOCUMENT THE TYPE AND LOCATION OF ALL EXISTING STRIPING AND PAVEMENT MARKINGS, BY SURVEYING OR OTHER APPROVED METHOD, PRIOR TO CONSTRUCTION. INSTALL NEW LONGITUDINAL STRIPING AND PAVEMENT MARKINGS TO MATCH PRE-CONSTRUCTION LAYOUT. THE FINAL LOCATIONS AND QUANTITIES OF STRIPING AND OR PAVEMENT MARKINGS MAY BE ALTERED BY ENGINEER.
- CONTRACTOR SHALL INSTALL NEW RAISED PAVEMENT MARKERS PER ODOT STANDARD DRAWINGS 502 AND 515.
- TEMPORARY FLEXIBLE PAVEMENT MARKERS ARE ALLOWED PRIOR TO STRIPING FOR A MAXIMUM PERIOD OF 14 CALENDAR DAYS.
- CONTRACTOR SHALL OBTAIN CITY APPROVAL OF STRIPING LAYOUT A MINIMUM OF 72 HOURS BEFORE STRIPING.
- LANE DIMENSIONS SHALL BE MEASURED FROM CENTER OF STRIPE OR FROM EDGE OF PAVEMENT OR CURB TO CENTER OF STRIPE.

## TRAFFIC CONTROL NOTES

- TRAFFIC CONTROL/DETOUR PLANS SHALL BE PREPARED BY THE CONTRACTOR. THE DRAFT CONCEPT TRAFFIC CONTROL PLAN MUST BE APPROVED BY THE CITY PRIOR TO THE PRE-CONSTRUCTION CONFERENCE. THIS PLAN DOES NOT RELIEVE THE CONTRACTOR FROM SUBMITTING DETAILED TRAFFIC CONTROL PLANS AS REQUIRED DURING CONSTRUCTION.
- THE CONTRACTOR SHALL PROVIDE TEMPORARY PROTECTION AND DIRECTION OF TRAFFIC IN ACCORDANCE WITH THE MANUAL OF UNIFORM TRAFFIC CONTROL DEVICES, ODOT STANDARD DRAWINGS, ODOT STANDARD SPECIFICATIONS, AND CONTRACT SPECIAL PROVISIONS.
- USE TEMPORARY PAVEMENT MARKERS, BARRIERS, BARRICADES, AND SIGNS AS REQUIRED TO SAFELY DETOUR PEDESTRIAN AND VEHICULAR TRAFFIC AROUND CONSTRUCTION. LABEL TYPE AND LOCATION FOR ALL ITEMS ON TRAFFIC CONTROL PLANS.
- APPROPRIATE METHODS OF PEDESTRIAN AND VEHICULAR TRAFFIC CONTROL, INCLUDING FLAGGERS, SHALL BE EMPLOYED BY THE CONTRACTOR TO THE EXTENT DEEMED NECESSARY BY THE TRAFFIC CONTROL SUPERVISOR AND AS APPROVED BY THE CITY AND THE ENGINEER TO PROTECT WORKERS OR THIRD PARTIES AND SAFELY ACCOMMODATE TRAFFIC THROUGH THE WORK ZONE.
- THE CONTRACTOR SHALL COORDINATE ACCESS TO DRIVEWAYS WITH PROPERTY OWNERS. ACCESS TO ROADWAY APPROACHES WITHIN THE PROJECT LIMITS SHALL BE MAINTAINED AT ALL TIMES. TRAFFIC PLATES SHALL BE USED, AND SECURED IN A MANNER ACCEPTABLE TO THE CITY, ACROSS ALL TRENCHES BLOCKING DRIVEWAYS TO PROVIDE ACCESS AT ALL TIMES. AT NO TIME SHALL CONTRACTORS DETAIN OR DELAY EMERGENCY VEHICLES.
- THE CONTRACTOR SHALL COORDINATE ACCESS FOR SERVICES INCLUDING, BUT NOT LIMITED TO, MAIL DELIVERY, TRASH PICKUP, SCHOOL TRANSPORTATION, AND ANY OTHER SPECIAL TRANSPORTATION SERVICES THAT EXIST WITHIN THE PROJECT AREA.
- EXISTING SIGNS THAT CONFLICT WITH CONSTRUCTION SIGNING SHALL BE COVERED OR REMOVED DURING CONSTRUCTION AND REPLACED AFTER CONSTRUCTION.
- PROVIDE ACP WEDGES FOR LONGITUDINAL AND TRANSVERSE JOINTS ACCORDING TO 00620.40(d), 00744.44 AND 00744.45.
- THE CONTRACTOR SHALL PROVIDE SAFE, STABLE, AND ACCESSIBLE ACCESS TO ALL DRIVEWAY AND PEDESTRIAN PATHS CONNECTING TO FRONT DOORS AT ALL TIMES. TEMPORARY INTERRUPTIONS IN ACCESS SHALL BE COORDINATED BY THE CONTRACTOR WITH THE PROPERTY OWNER OR OCCUPANT AS REQUIRED.
- CONTRACTOR SHALL FURNISH PORTABLE CHANGEABLE MESSAGE SIGN AT WORK ZONES ON ARTERIAL ROADS IN ACCORDANCE WITH THE SPECIFICATIONS.

## SITE RESTORATION NOTES

- RESTORE ALL DISTURBED SURFACES TO PRE-CONSTRUCTION CONDITION OR BETTER. MATCH EXISTING SURROUNDING MATERIALS.
- CONTRACTOR TO RECONFIGURE EXISTING IRRIGATION SYSTEMS AS NEEDED. COORDINATE WITH ADJACENT PROPERTY OWNERS.

## SIDEWALK RAMP GENERAL NOTES

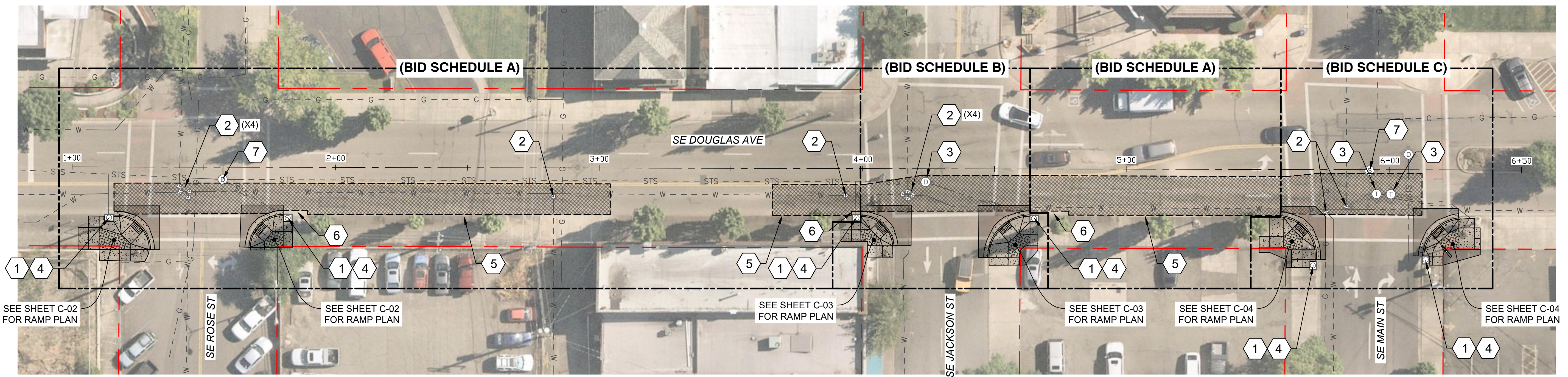
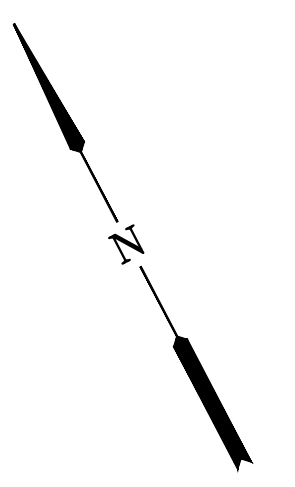
- CONTRACTOR SHALL BE RESPONSIBLE FOR MEETING ALL AMERICANS WITH DISABILITIES (ADA) REQUIREMENTS AS DEFINED BY THE PUBLIC RIGHTS-OF-WAY ACCESSIBILITY GUIDELINES (PROWAG). DETAILS AND DIMENSIONS SHOWN ARE APPROXIMATE ONLY AND INTENDED AS A GUIDE FOR INITIAL LAYOUT PURPOSES ONLY AND ARE NOT COMPLETE. CONTRACTOR SHALL TAKE ALL NECESSARY FIELD MEASUREMENTS AND OTHERWISE VERIFY ALL DIMENSIONS TO MEET ADA REQUIREMENTS. SHOULD ANY ERROR OR INCONSISTENCY EXIST, THE CONTRACTOR SHALL NOT PROCEED WITH THE WORK AFFECTED UNTIL REPORTED TO THE ENGINEER FOR CLARIFICATION OR CORRECTION.
- COMPLETE SIDEWALK CONSTRUCTION PRIOR TO FINAL PAVING OF STREET.
- ALL SURVEY AND STAKING NECESSARY FOR CONSTRUCTION SHALL BE PROVIDED BY THE CONTRACTOR. THE CONTRACTOR SHALL DEVELOP AND MAKE ALL DETAIL SURVEYS NECESSARY FOR LAYOUT AND CONSTRUCTION. COMPLETE ALL SURVEY STAKING AS NEEDED USING INFORMATION CONTAINED IN THE PLANS AND ADJUSTED AS NECESSARY TO MEET ADA REQUIREMENTS. ADDITIONAL INFORMATION OR CLARIFICATION BY THE ENGINEER MAY BE AVAILABLE UPON REQUEST, BUT IS NOT GUARANTEED. SURVEYED FIELD LAYOUT SHALL BE REVIEWED BY THE ENGINEER PRIOR TO DEMOLITION AND AGAIN PRIOR TO CONCRETE PLACEMENT.
- ADA RAMP CLOSURES SHALL BE LIMITED TO 10 CALENDAR DAYS. SUBMIT TRAFFIC CONTROL PLAN AND PEDESTRIAN DETOUR PLAN FOR RAMP CLOSURES. PLAN SHALL INCLUDE, BUT IS NOT LIMITED TO, WORK AREA PROTECTION, SIDEWALK CLOSURES AND DETOURS.



Know what's below.  
Call before you dig.

C:\Users\15093\OneDrive - Fischer Project Solutions\Projects\Roseburg\026-Douglas Ave Pavement Repair\CADD\_WORKING\G-03 - GENERAL NOTES.dwg 6/18/2024 7:34 AM Anthony Fischer

NO.	DATE	BY	REVISION	SCALE	DESIGNED: R. VOORHIES				<b>900 SE DOUGLAS AVE. ROSEBURG, OR 97470</b>  <b>CITY PROJECT #: 24PW09 CITY PROJECT MANAGER RYAN HERINCKX</b>	<b>GENERAL NOTES</b>  <b>2024 SE DOUGLAS AVENUE PAVEMENT REPAIRS</b>  <b>JUNE 2024</b>		SHEET NO.
				PLAN	DRAWN: A. FISCHER							G-03
				PROFILE	CHECKED: R. VOORHIES							
				ONE INCH (REF)	CWE PROJECT NO. 40193.0XX.01					3 OF 10		



**PAVEMENT REPAIR PLAN**  
1" = 20'

**LEGEND:**

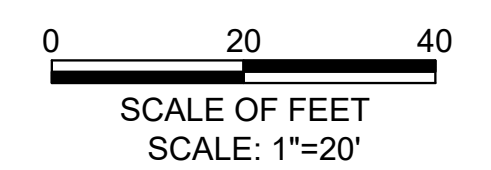
LIMITS OF 20" ASPHALT CONCRETE PAVEMENT REPAIR. SEE DETAIL 1, SHEET D-01.

**GENERAL NOTES:**

1. APPLY LANE CLOSURES PER APPLICABLE ODOT STANDARD DRAWING OR APPROVED TRAFFIC CONTROL PLAN.
2. REPLACE IN-KIND ALL STRIPING, PAVEMENT SYMBOLS AND RAISED PAVEMENT MARKERS AFFECTED BY CONSTRUCTION OPERATIONS, EXCEPT FOR STAMPED BRICK PATTERN WITHIN CROSSWALKS. STAMPED BRICK PATTERN IN CROSSWALKS DOES NOT NEED TO BE REPLACED.
3. 20" ASPHALT CONCRETE PAVEMENT REPAIRS SHALL BE COMPLETED AS NIGHT WORK AND BE LIMITED TO 5 CONSECUTIVE WEEKDAYS. SEE TECHNICAL PROVISIONS FOR ADDITIONAL INFORMATION REGARDING WORK HOURS AND ALLOWABLE LANE CLOSURES.

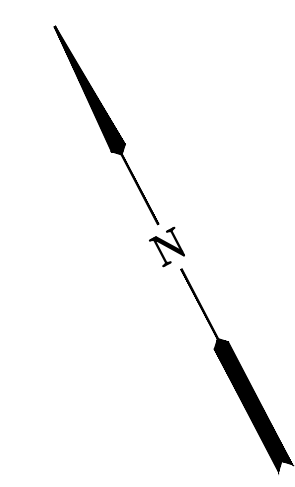
**CONSTRUCTION KEYED NOTES:**

- INSTALL INLET PROTECTION TYPE 10, SEE ODOT STANDARD DRAWING RD1010.
- RESET VALVE BOX TO FINISH GRADE
- IF NECESSARY, ADJUST EXISTING MANHOLE TO ANTICIPATED FINISH GRADE PRIOR TO PAVING OPERATIONS. SEE DETAIL 1/D-03.
- INSTALL STORM DRAIN MARKING STENCIL, SEE DETAIL 2/D-01.
- PRESERVE AND PROTECT EXISTING CURB.
- PRESERVE AND PROTECT EXISTING CURB AND GUTTER.
- PRESERVE AND PROTECT EXISTING MANHOLE.



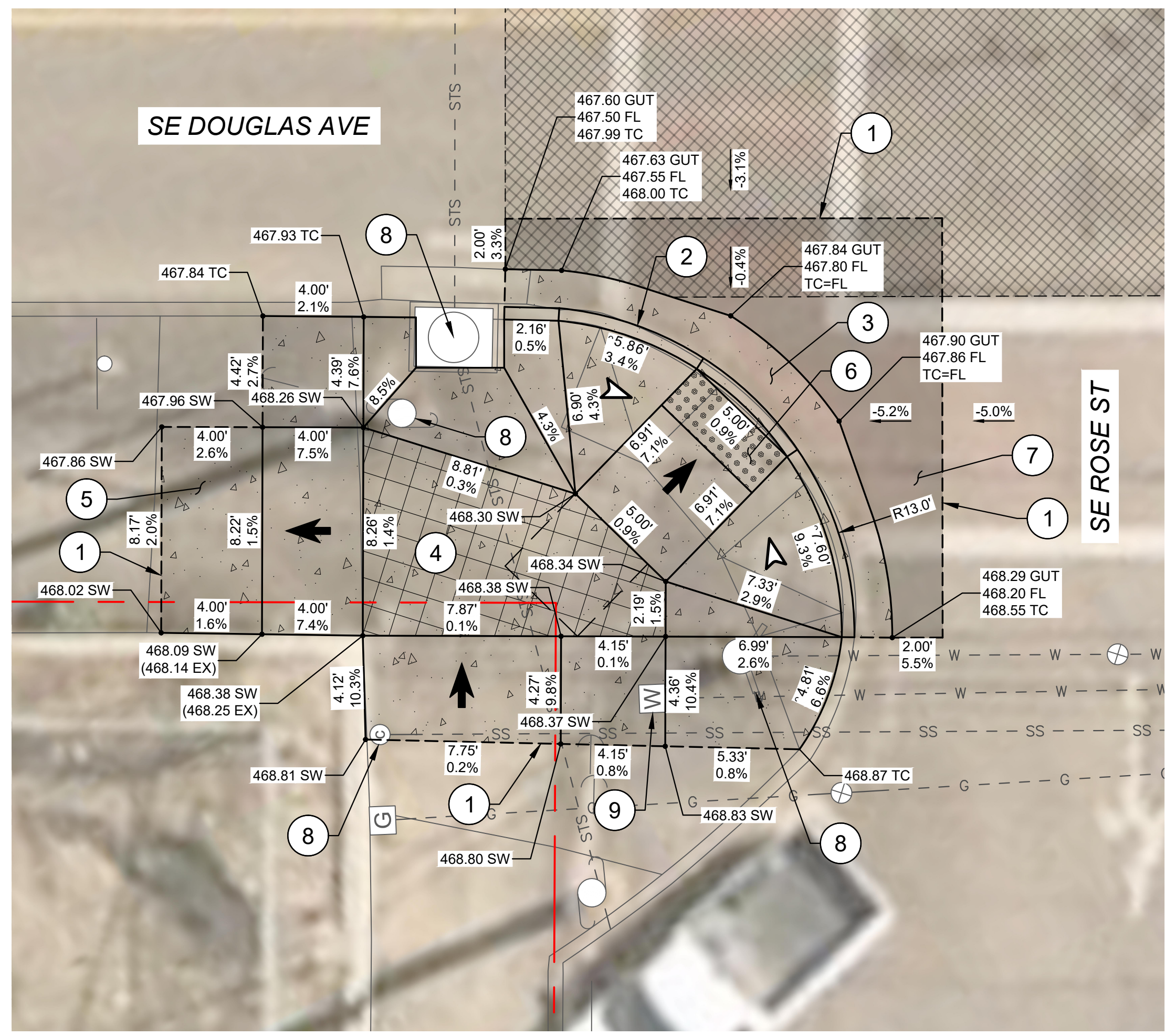
<table border="1" style="width: 100%; border-collapse: collapse;"> <thead> <tr> <th style="width: 5%;">NO.</th> <th style="width: 5%;">DATE</th> <th style="width: 5%;">BY</th> <th style="width: 5%;">REVISION</th> </tr> </thead> <tbody> <tr><td> </td><td> </td><td> </td><td> </td></tr> <tr><td> </td><td> </td><td> </td><td> </td></tr> <tr><td> </td><td> </td><td> </td><td> </td></tr> <tr><td> </td><td> </td><td> </td><td> </td></tr> </tbody> </table>	NO.	DATE	BY	REVISION																	<table border="1" style="width: 100%; border-collapse: collapse;"> <thead> <tr> <th colspan="2">SCALE</th> </tr> </thead> <tbody> <tr> <td style="width: 50%;">PLAN</td> <td style="width: 50%;">1" = 20'</td> </tr> <tr> <td> </td> <td> </td> </tr> <tr> <td>PROFILE</td> <td>HORIZ. / VERT.</td> </tr> <tr> <td> </td> <td> </td> </tr> <tr> <td colspan="2" style="text-align: center;">ONE INCH (REF)</td> </tr> </tbody> </table>	SCALE		PLAN	1" = 20'			PROFILE	HORIZ. / VERT.			ONE INCH (REF)		<p>DESIGNED: R. VOORHIES</p> <p>DRAWN: A. FISCHER</p> <p>CHECKED: R. VOORHIES</p> <p>CWE PROJECT NO. 40193.0XX.01</p>		<p><b>CENTURY WEST</b> ENGINEERING</p> <p>5500 MEADOWS RD. #250   LAKE OSWEGO, OR 97035 WWW.CENTURYWEST.COM   503.419.2130</p>	<p><b>THE CITY OF ROSEBURG</b></p> <p>900 SE DOUGLAS AVE. ROSEBURG, OR 97470</p> <p>CITY PROJECT #: 24PW09 CITY PROJECT MANAGER RYAN HERINCKX</p>	<p><b>PAVEMENT REPAIR PLAN</b> SE DOUGLAS AVE - STA 1+00 TO STA 6+50</p> <p><b>2024 SE DOUGLAS AVENUE PAVEMENT REPAIRS</b> JUNE 2024</p>	<p>SHEET NO.</p> <p align="center"><b>C-01</b></p> <p align="right"><b>4 OF 10</b></p>
NO.	DATE	BY	REVISION																																				
SCALE																																							
PLAN	1" = 20'																																						
PROFILE	HORIZ. / VERT.																																						
ONE INCH (REF)																																							

C:\Users\15093\OneDrive - Fischer Project Solutions\Projects\Roseburg\2024-Douglas Ave Pavement Repair\CAD\_WORKING\C-01.dwg 6/18/2024 7:43 AM Anthony Fischer

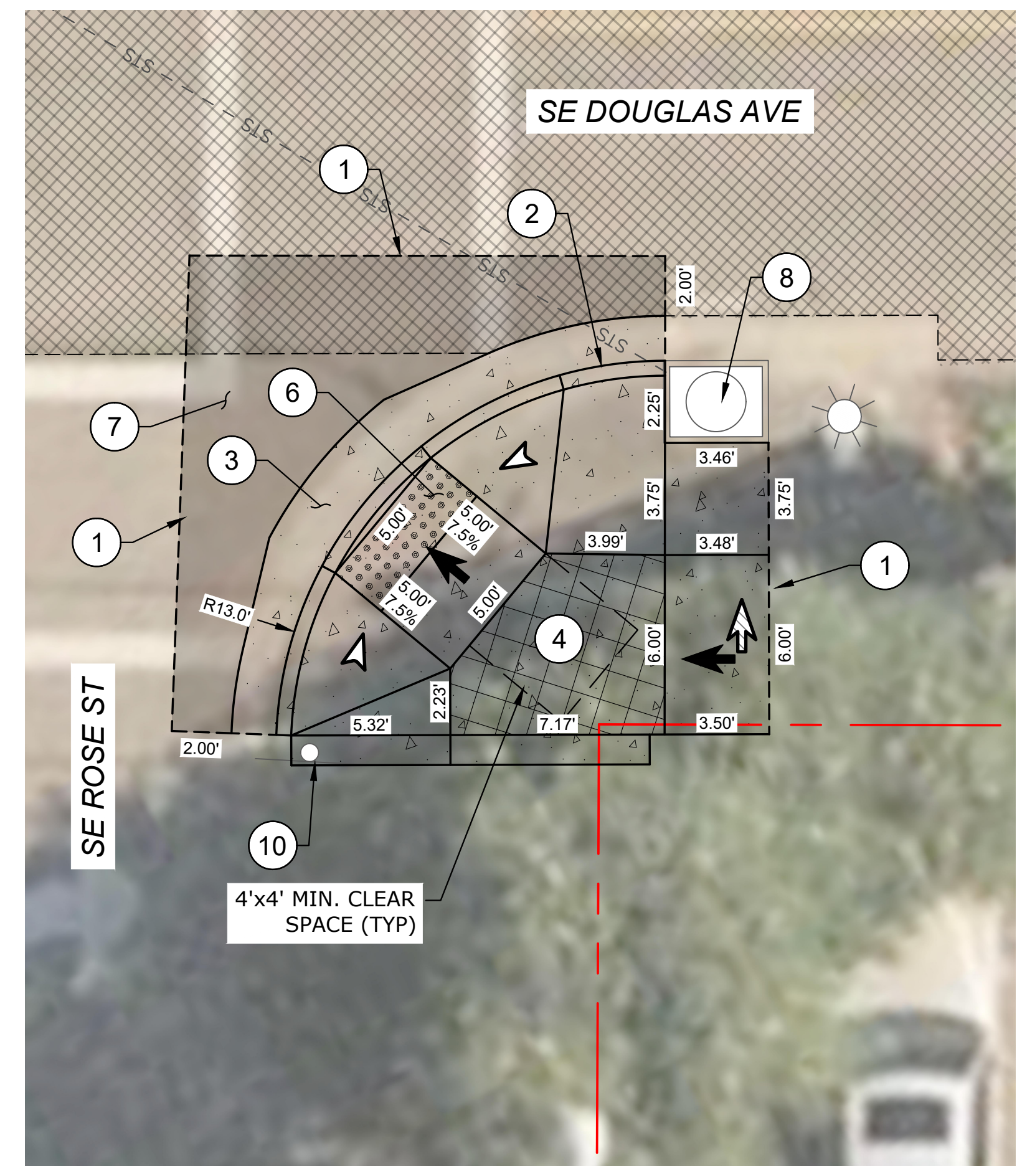


**CONSTRUCTION KEYED NOTES:**

- 1 SAWCUT AND MATCH EXISTING.
- 2 CONSTRUCT STANDARD CURB AND GUTTER, SEE ODOT STD. DRG. RD700.
- 3 CONSTRUCT 2' GUTTER AT CURB RAMP LANDING/THROAT, SEE DETAIL 3/D-02.
- 4 CONSTRUCT CURB RAMP, SEE ODOT SERIES RD900 STD. DRGS. AND DETAIL 2/D-02.
- 5 CONSTRUCT TRANSITION SIDEWALK PANEL, SEE ODOT STD. DRG. RD722.
- 6 INSTALL YELLOW DETECTABLE WARNING SURFACE, SEE ODOT STD. DRG. RD904.
- 7 RESTORE EXISTING ROADWAY. SEE DETAIL 1/D-02.
- 8 PRESERVE AND PROTECT IN PLACE.
- 9 RESET EXISTING METER BOX TO FINISH GRADE.
- 10 REMOVE, SALVAGE, AND REINSTALL EXISTING SIGN.



**RAMP PLAN - SW CORNER  
ROSE ST AND DOUGLAS AVE**  
1" = 4'

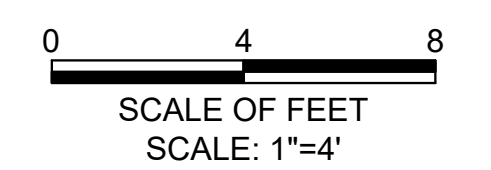


**RAMP PLAN - SE CORNER  
ROSE ST AND DOUGLAS AVE**  
1" = 4'

**NOTE:**  
THE RAMP LAMP LAYOUT SHOWN IS BASED ON AERIAL IMAGERY AND GIS LINEWORK. HORIZONTAL AND VERTICAL INFORMATION AVAILABLE TO THE CONTRACTOR IS NOT SURVEY GRADE. CONTRACTOR SHALL PLAN TO VERIFY LAYOUT IN FIELD WITH ENGINEER.

**LEGEND:**

- LIMITS OF CONCRETE CURB RAMP WORK
- LIMITS OF PAVEMENT REGADING FOR RAMP INSTALLATION
- LIMITS OF 20" PAVEMENT REPAIR, SEE SHEET C-01
- CURB RAMP LANDING NO GRADE BREAKS 1.5% MAX DESIGN SLOPE (2.0% MAX CONSTRUCTED)
- TRUNCATED DOME DETECTABLE WARNING SURFACE
- SAWCUT
- RAMP RUNNING SLOPE 7.5% MAX DESIGN (8.3% MAX CONSTRUCTED)
- CROSS SLOPE 1.5% MAX DESIGN (2.0% MAX CONSTRUCTED)
- FLARE SLOPE (10% MAX CONSTRUCTED)

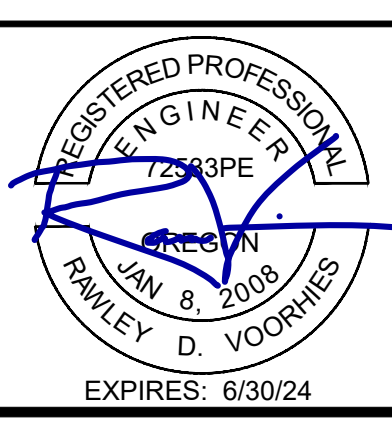


C:\Users\15093\OneDrive - Fischer Project Solutions\Projects\Roseburg\2024-Douglas Ave Pavement Repair\CADD\WORKING\2024-Douglas Ave Pavement Repair\C-02 TO C-04 - RAMP PLANS.dwg 6/18/2024 7:44 AM Anthony Fischer

NO.	DATE	BY	REVISION

SCALE	
PLAN	1" = 4'
HORIZ.	
VERT.	
ONE INCH (REF)	

DESIGNED:  
R. VOORHIES  
DRAWN:  
A. FISCHER  
CHECKED:  
R. VOORHIES  
CWE PROJECT NO.  
40193.OXX.01

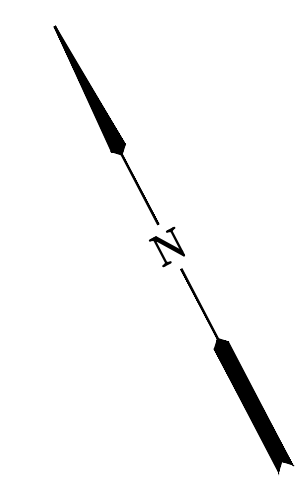


**CENTURY WEST ENGINEERING**  
5500 MEADOWS RD. #250 LAKE OSWEGO, OR 97035  
WWW.CENTURYWEST.COM 503.419.2130

**THE CITY OF ROSEBURG**  
900 SE DOUGLAS AVE. ROSEBURG, OR 97470  
CITY PROJECT #: 24PW09  
CITY PROJECT MANAGER RYAN HERINCKX

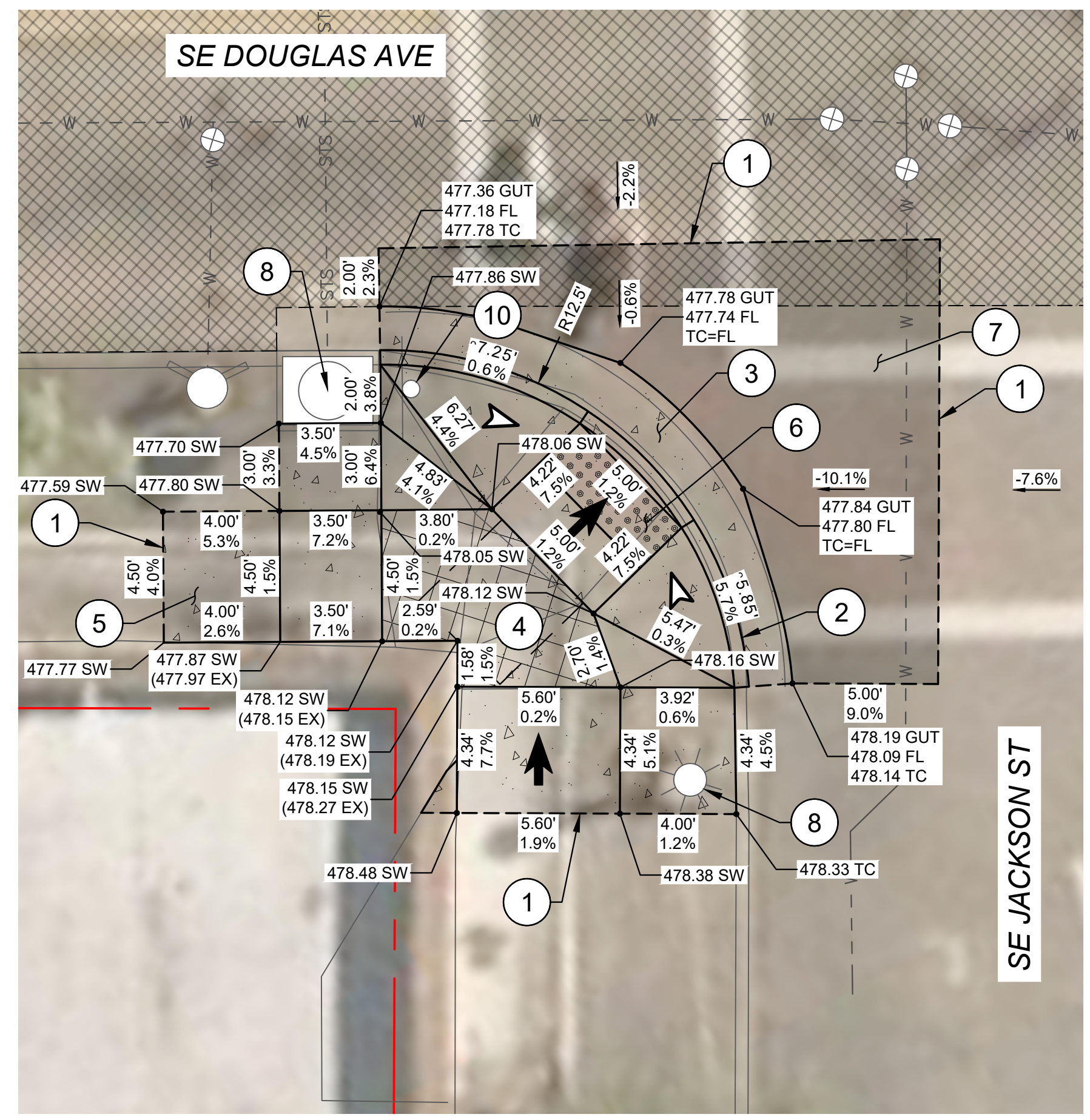
**RAMP PLANS  
SE ROSE ST & SE DOUGLAS AVE  
(BID SCHEDULE A)**  
2024 SE DOUGLAS AVENUE PAVEMENT REPAIRS  
JUNE 2024

SHEET NO.  
**C-02**  
5 OF 10

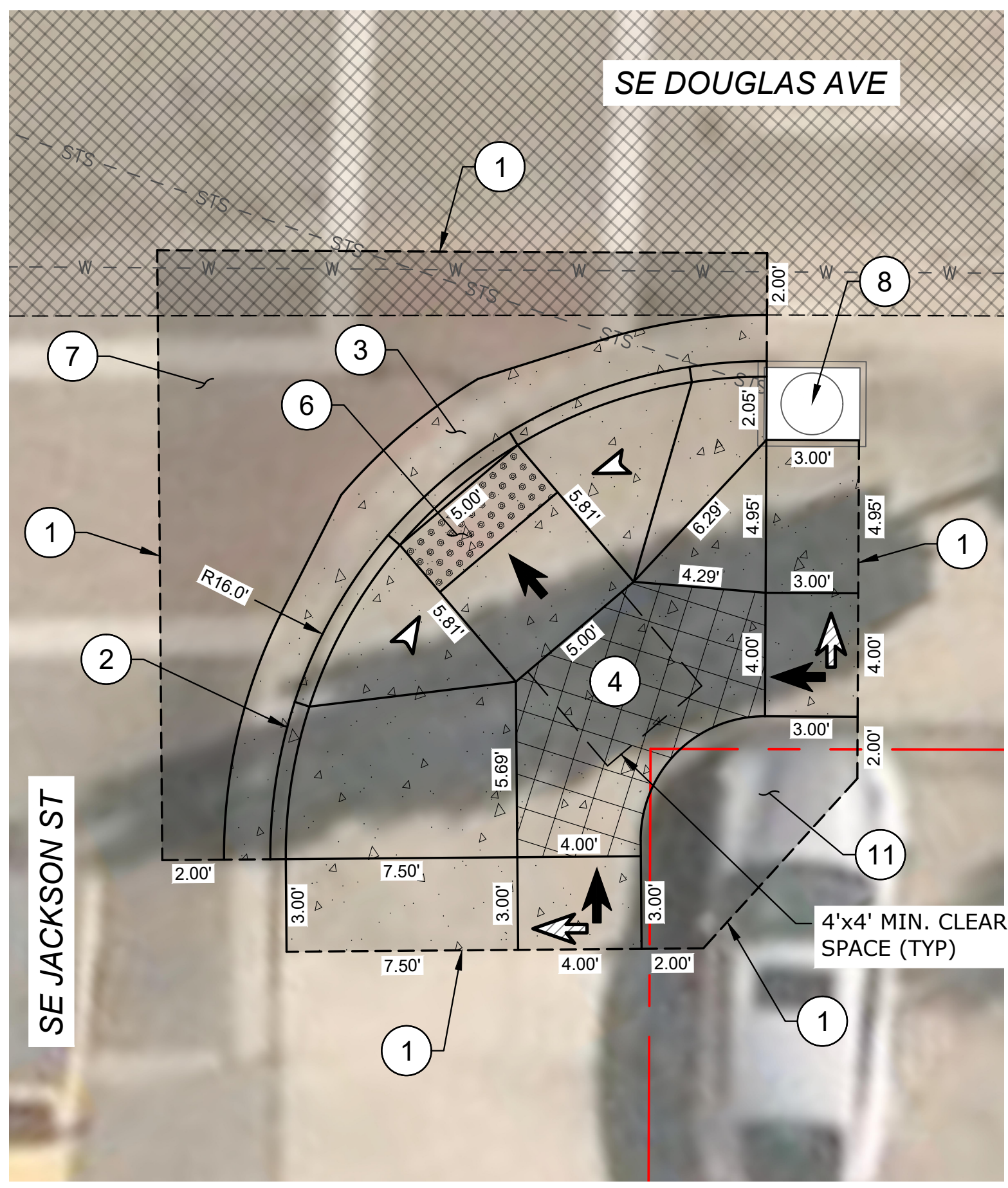


**CONSTRUCTION KEYED NOTES:**

- 1 SAWCUT AND MATCH EXISTING.
- 2 CONSTRUCT STANDARD CURB AND GUTTER, SEE ODOT STD. DRG. RD700.
- 3 CONSTRUCT 2' GUTTER AT CURB RAMP LANDING/THROAT, SEE DETAIL 3/D-02.
- 4 CONSTRUCT CURB RAMP, SEE ODOT SERIES RD900 STD. DRGS. AND DETAIL 2/D-02.
- 5 CONSTRUCT TRANSITION SIDEWALK PANEL, SEE ODOT STD. DRG. RD722.
- 6 INSTALL YELLOW DETECTABLE WARNING SURFACE, SEE ODOT STD. DRG. RD904.
- 7 RESTORE EXISTING ROADWAY. SEE DETAIL 1/D-02.
- 8 PRESERVE AND PROTECT IN PLACE.
- 10 REMOVE, SALVAGE, AND REINSTALL EXISTING SIGN.
- 11 RESTORE EXISTING PARKING LOT, 4" ACP OVER 4" AGG BASE (3/4"-0").



**RAMP PLAN - SW CORNER  
JACKSON ST AND DOUGLAS AVE**  
1" = 4'

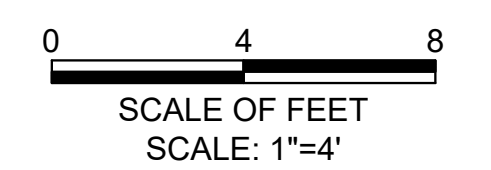


**NOTE:**  
THE RAMP LAMP LAYOUT SHOWN IS BASED ON AERIAL IMAGERY AND GIS LINEWORK. HORIZONTAL AND VERTICAL INFORMATION AVAILABLE TO THE CONTRACTOR IS NOT SURVEY GRADE. CONTRACTOR SHALL PLAN TO VERIFY LAYOUT IN FIELD WITH ENGINEER.

**RAMP PLAN - SE CORNER  
JACKSON ST AND DOUGLAS AVE**  
1" = 4'

**LEGEND:**

- LIMITS OF CONCRETE CURB RAMP WORK
- LIMITS OF PAVEMENT REGRADE FOR RAMP INSTALLATION
- LIMITS OF 20" PAVEMENT REPAIR, SEE SHEET C-01
- CURB RAMP LANDING NO GRADE BREAKS 1.5% MAX DESIGN SLOPE (2.0% MAX CONSTRUCTED)
- TRUNCATED DOME DETECTABLE WARNING SURFACE
- SAWCUT
- RAMP RUNNING SLOPE 7.5% MAX DESIGN (8.3% MAX CONSTRUCTED)
- CROSS SLOPE 1.5% MAX DESIGN (2.0% MAX CONSTRUCTED)
- FLARE SLOPE (10% MAX CONSTRUCTED)

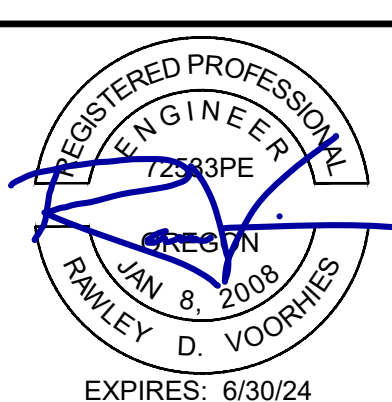


C:\Users\15093\OneDrive - Fischer Project Solutions\Projects\Roseburg\2024-Douglas Ave Pavement Repair\CAD WORKING\02 TO C-04 - RAMP PLANS.dwg 6/18/2024 7:45 AM Anthony Fischer

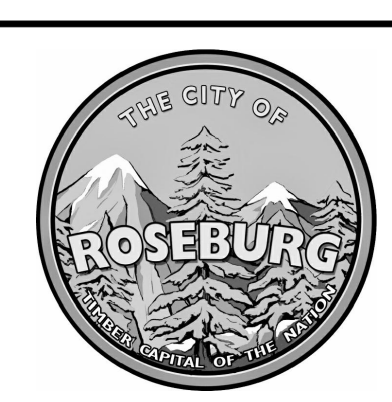
NO.	DATE	BY	REVISION

SCALE	
PLAN	1" = 4'
PROFILE	HORIZ. VERT.
ONE INCH (REF)	

DESIGNED:  
R. VOORHIES  
DRAWN:  
A. FISCHER  
CHECKED:  
R. VOORHIES  
CWE PROJECT NO.  
40193.0XX.01



**CENTURY WEST ENGINEERING**  
5500 MEADOWS RD. #250 LAKE OSWEGO, OR 97035  
WWW.CENTURYWEST.COM 503.419.2130



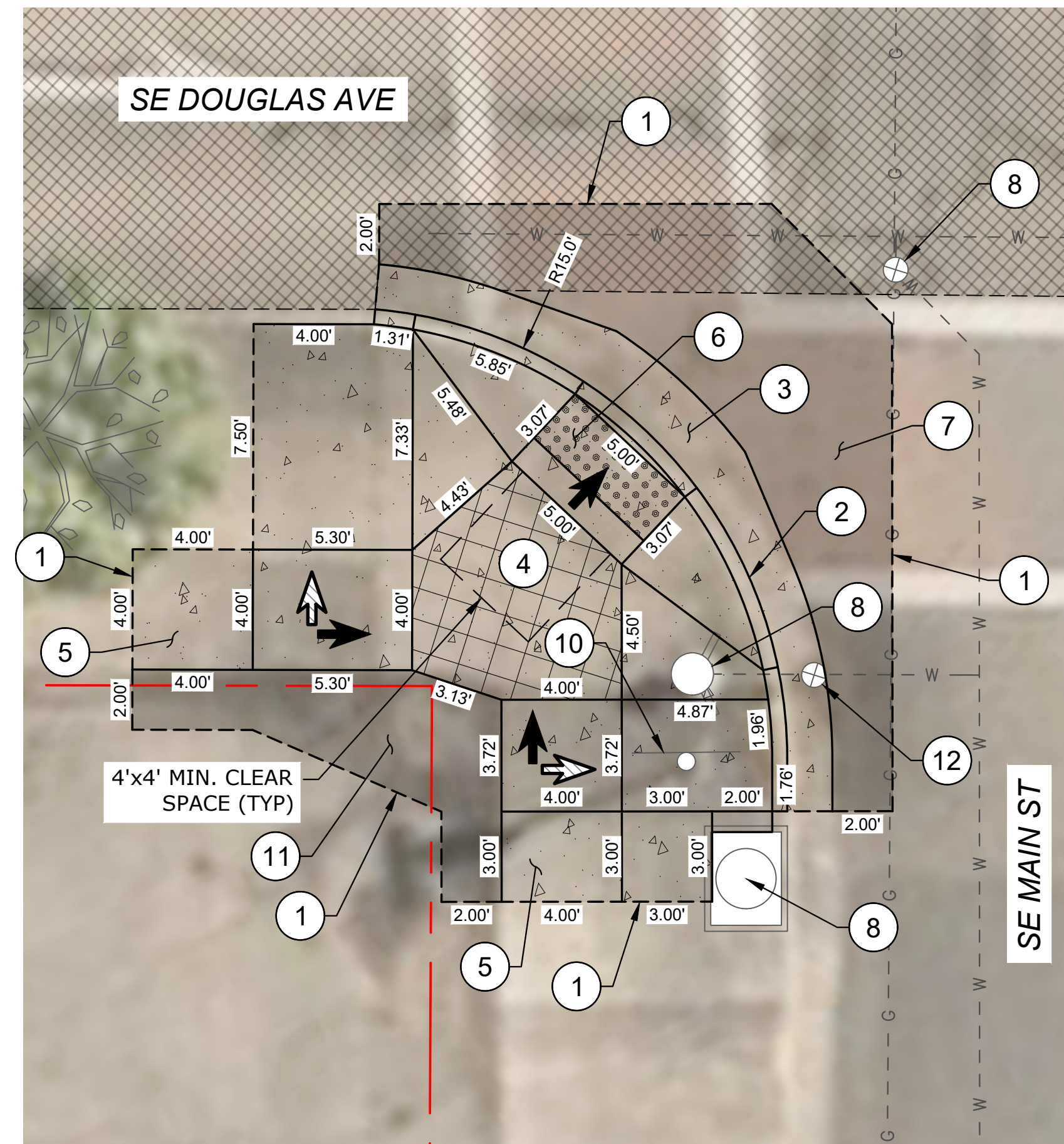
**900 SE DOUGLAS AVE.  
ROSEBURG, OR 97470**  
CITY PROJECT #: 24PW09  
CITY PROJECT MANAGER  
RYAN HERINCKX

**RAMP PLANS  
SE JACKSON ST & SE DOUGLAS AVE  
(BID SCHEDULE B)**  
**2024 SE DOUGLAS AVENUE PAVEMENT REPAIRS  
JUNE 2024**

SHEET NO.  
**C-03**  
**6 OF 10**

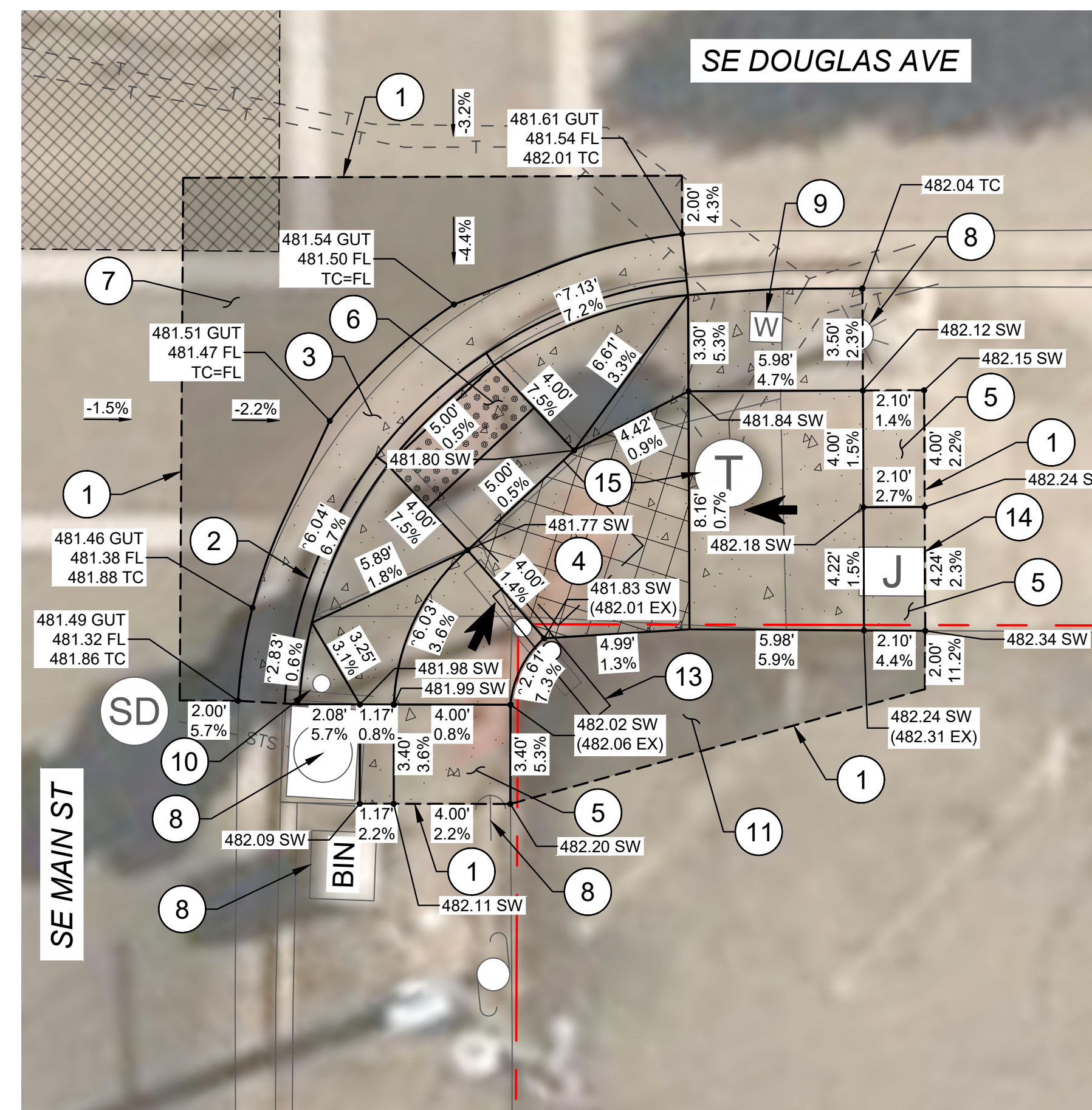
**CONSTRUCTION KEYED NOTES:**

- 1 SAWCUT AND MATCH EXISTING.
- 2 CONSTRUCT STANDARD CURB AND GUTTER, SEE ODOT STD. DRG. RD700.
- 3 CONSTRUCT 2' GUTTER AT CURB RAMP LANDING/THROAT, SEE DETAIL 3/D-02.
- 4 CONSTRUCT CURB RAMP, SEE ODOT SERIES RD900 STD. DRGS. AND DETAIL 2/D-02.
- 5 CONSTRUCT TRANSITION SIDEWALK PANEL, SEE ODOT STD. DRG. RD722.
- 6 INSTALL YELLOW DETECTABLE WARNING SURFACE, SEE ODOT STD. DRG. RD904.
- 7 RESTORE EXISTING ROADWAY, SEE DETAIL 1/D-02.
- 8 PRESERVE AND PROTECT IN PLACE.
- 9 RESET EXISTING METER BOX TO FINISH GRADE.
- 10 REMOVE, SALVAGE, AND REINSTALL EXISTING SIGN.
- 11 RESTORE EXISTING PARKING LOT, 4" ACP OVER 4" AGG BASE (3/4"-0").
- 12 RESET EXISTING VALVE BOX TO FINISH GRADE.
- 13 REMOVE, SALVAGE, AND REINSTALL EXISTING LARGE SIGN IN NEW LOCATION. COORDINATE LOCATION WITH ENGINEER.
- 14 RESET EXISTING JUNCTION BOX TO FINISH GRADE.
- 15 RESET EXISTING COMM MANHOLE TO FINISH GRADE.



**NOTE:**  
THE RAMP LAMP LAYOUT SHOWN IS BASED ON AERIAL IMAGERY AND GIS LINWORK. HORIZONTAL AND VERTICAL INFORMATION AVAILABLE TO THE CONTRACTOR IS NOT SURVEY GRADE. CONTRACTOR SHALL PLAN TO VERIFY LAYOUT IN FIELD WITH ENGINEER.

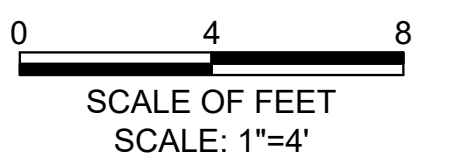
**RAMP PLAN - SW CORNER  
MAIN ST AND DOUGLAS AVE**  
1" = 4'



**RAMP PLAN - SE CORNER  
MAIN ST AND DOUGLAS AVE**  
1" = 4'

**LEGEND:**

- LIMITS OF CONCRETE CURB RAMP WORK
- LIMITS OF PAVEMENT REGADING FOR RAMP INSTALLATION
- LIMITS OF 20" PAVEMENT REPAIR, SEE SHEET C-01
- CURB RAMP LANDING NO GRADE BREAKS 1.5% MAX DESIGN SLOPE (2.0% MAX CONSTRUCTED)
- TRUNCATED DOME DETECTABLE WARNING SURFACE
- SAWCUT
- RAMP RUNNING SLOPE 7.5% MAX DESIGN (8.3% MAX CONSTRUCTED)
- CROSS SLOPE 1.5% MAX DESIGN (2.0% MAX CONSTRUCTED)
- FLARE SLOPE (10% MAX CONSTRUCTED)

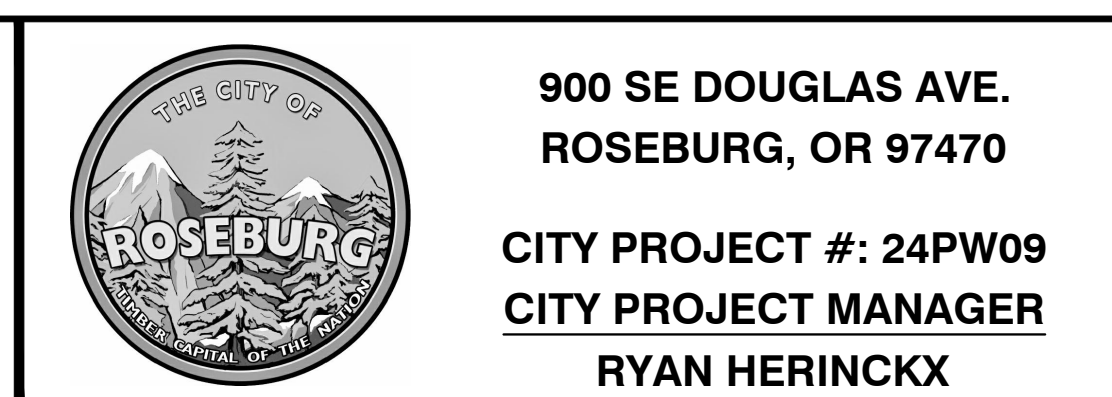
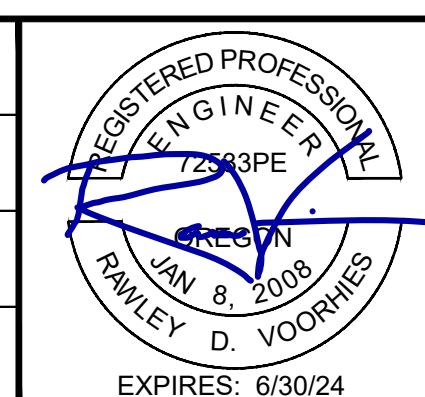


C:\Users\15093\OneDrive - Fischer Project Solutions\Projects\Roseburg\2024-Douglas Ave Pavement Repair\CAD - WORKING\02-Douglas Ave Ramp Plans.dwg 6/18/2024 7:45 AM Anthony Fischer

NO.	DATE	BY	REVISION

SCALE	
PLAN	1" = 4'
HORIZ.	
VERT.	
ONE INCH (REF)	

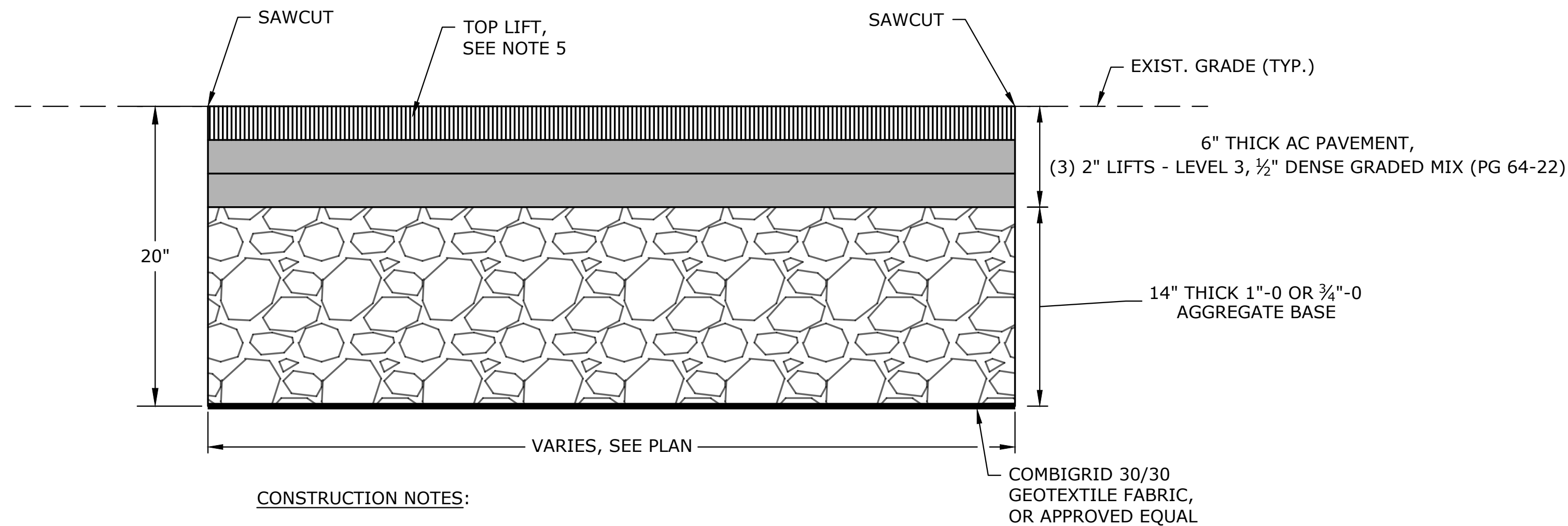
DESIGNED:  
R. VOORHIES  
DRAWN:  
A. FISCHER  
CHECKED:  
R. VOORHIES  
CWE PROJECT NO.  
40193.OXX.01



**RAMP PLANS  
SE MAIN ST & SE DOUGLAS AVE  
(BID SCHEDULE C)**

**2024 SE DOUGLAS AVENUE PAVEMENT REPAIRS  
JUNE 2024**

SHEET NO.  
**C-04**  
**7 OF 10**

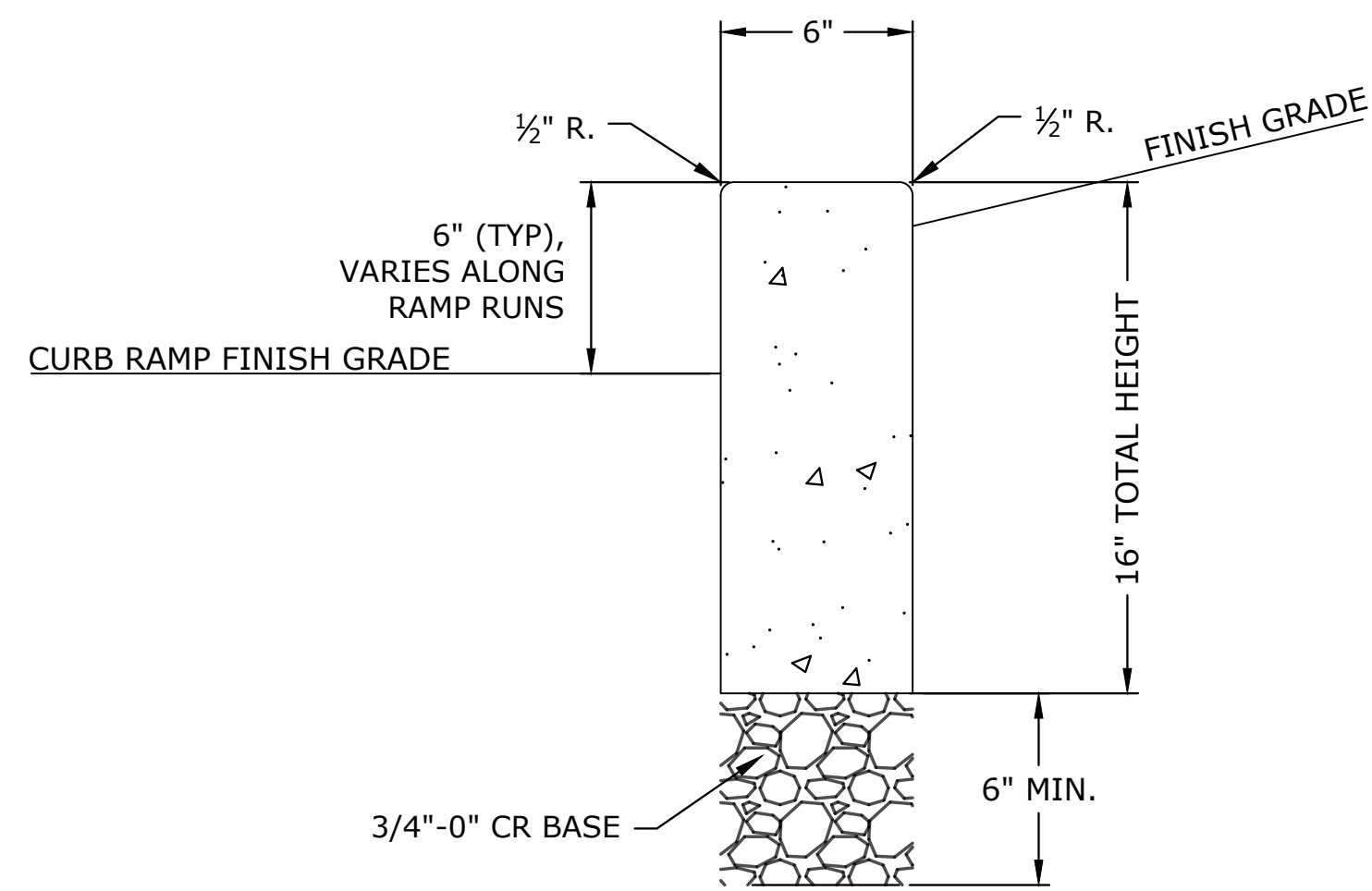


**CONSTRUCTION NOTES:**

1. LOCATIONS AS SHOWN PER PLAN, OR AS LOCATED BY ENGINEER.
2. SAWCUT EDGE OF REPAIR LIMITS TO PROVIDE A CLEAN VERTICAL SURFACE (TYP).
3. REMOVE EXISTING PAVEMENT AND AGGREGATE TO A DEPTH OF 20" BELOW EXISTING GRADE. INSTALL GEOTEXTILE FABRIC UPON COMPACTED SUBGRADE.
4. INSTALL 14" OF COMPACTED AGGREGATE BASE AND 6" OF AC PAVEMENT. TACK COAT ALL ACP SURFACES TO RECEIVE NEW ACP.
5. TOP LIFT PAVING TO OCCUR IN A SINGLE SHIFT.

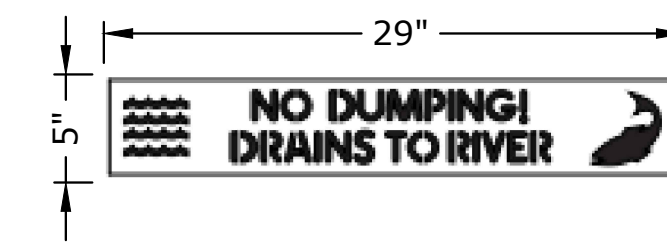
**20" ASPHALT CONCRETE PAVEMENT REPAIR**  
SCALE: NTS

1  
D-01



**PEDESTRIAN CURB**  
SCALE: NTS

3  
D-01

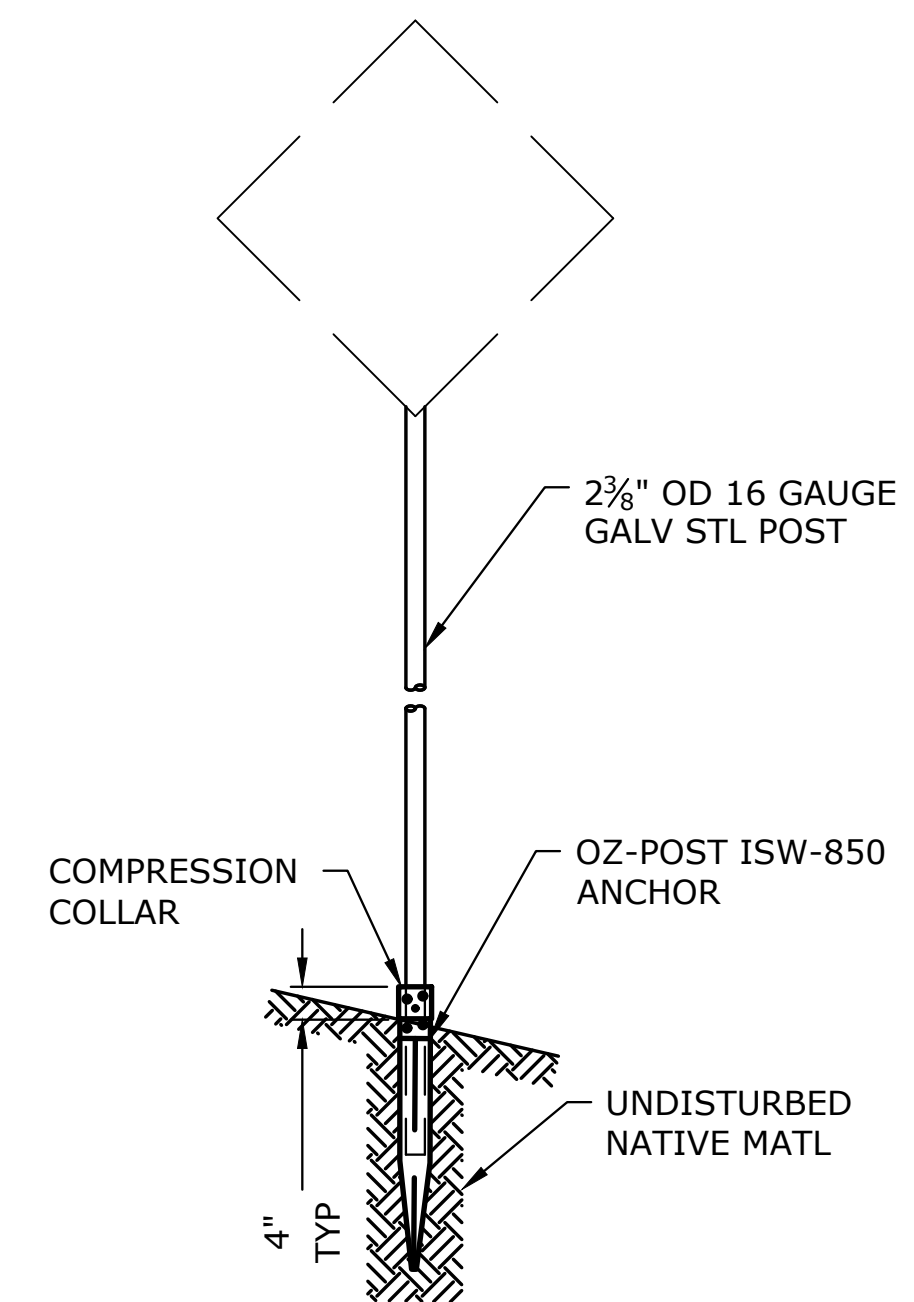


NOTE:  
PLACE INLET STENCIL ON THE TOP OF THE CURB OR CONCRETE INLET AS DIRECTED. PREPARE AND CLEAN SURFACE PRIOR TO PLACEMENT IN ACCORDANCE WITH SECTION 00850.43 OF THE STANDARD SPECIFICATIONS.

**STORM DRAIN MARKING STENCIL**  
(BLUE/WHITE)

**STORM DRAIN MARKING STENCIL**  
SCALE: NTS

2  
D-01



**NOTES:**

1. INSTALL ANCHOR AND POST PER MANUFACTURER'S RECOMMENDATION.
2. FOR HORIZONTAL AND VERTICAL CLEARANCES OF PERMANENT SIGNS, REFER TO ODOT STANDARD DRAWING TM200. COORDINATE FINAL LOCATION WITH ENGINEER IN FIELD.
3. ATTACH SIGNS PER ODOT STANDARD DRAWING TM677.

**SIGN SUPPORT**  
SCALE: NTS

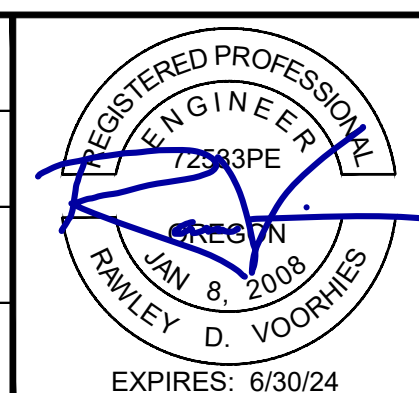
4  
D-01

C:\Users\15093\OneDrive - Fischer Project Solutions\Projects\Roseburg\2024\Douglas Ave Pavement Repair\CAD\WORKING\D-01 to D-03.dwg, 6/18/2024, 7:35 AM, Anthony Fischer

NO.	DATE	BY	REVISION

SCALE	
PLAN	HORIZ.
PROFILE	VERT.
ONE INCH (REF)	

DESIGNED:  
R. VOORHIES  
DRAWN:  
A. FISCHER  
CHECKED:  
R. VOORHIES  
CWE PROJECT NO.  
40193.0XX.01



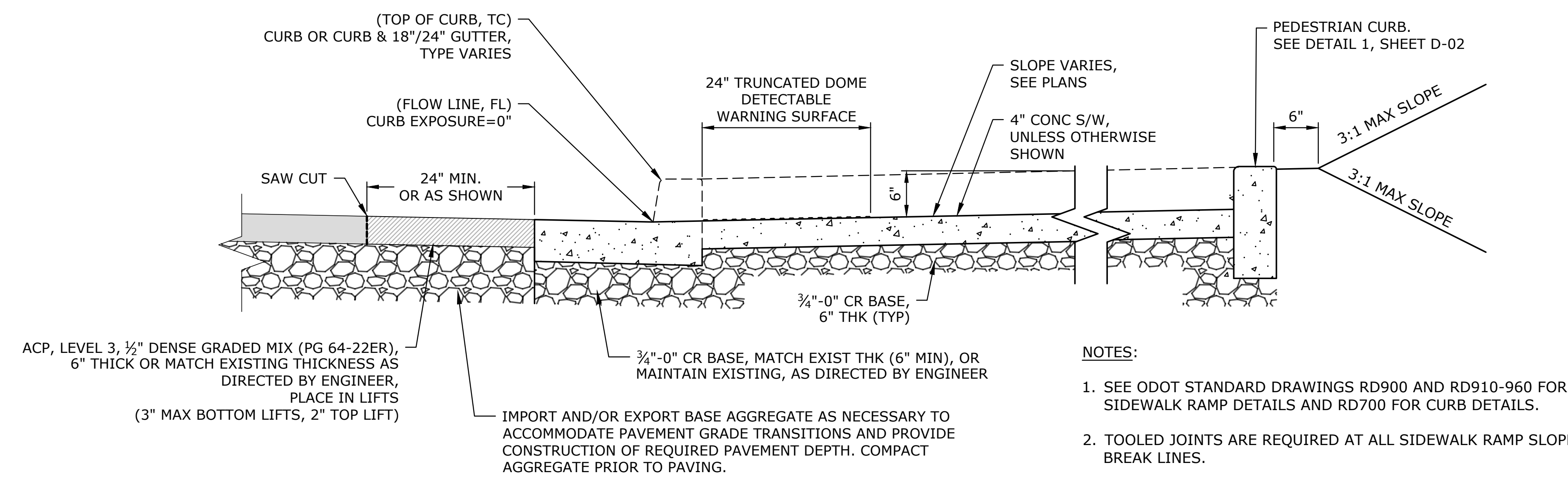
**CENTURY WEST ENGINEERING**  
5500 MEADOWS RD. #250 LAKE OSWEGO, OR 97035  
WWW.CENTURYWEST.COM 503.419.2130

**THE CITY OF ROSEBURG**  
900 SE DOUGLAS AVE. ROSEBURG, OR 97470  
CITY PROJECT #: 24PW09  
CITY PROJECT MANAGER RYAN HERINCKX

**DETAILS**  
2024 SE DOUGLAS AVENUE PAVEMENT REPAIRS  
JUNE 2024

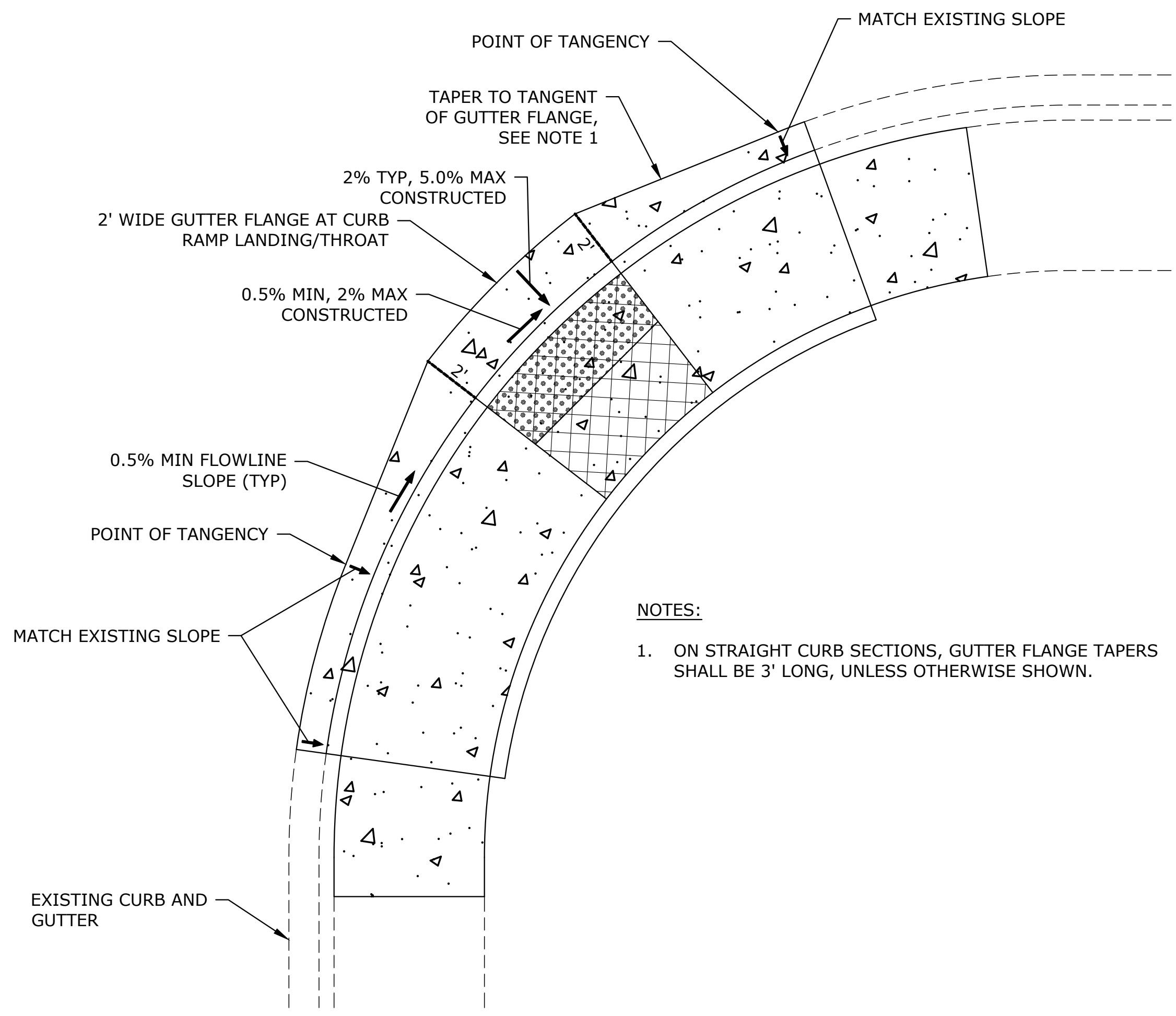
SHEET NO.  
**D-01**  
8 OF 10





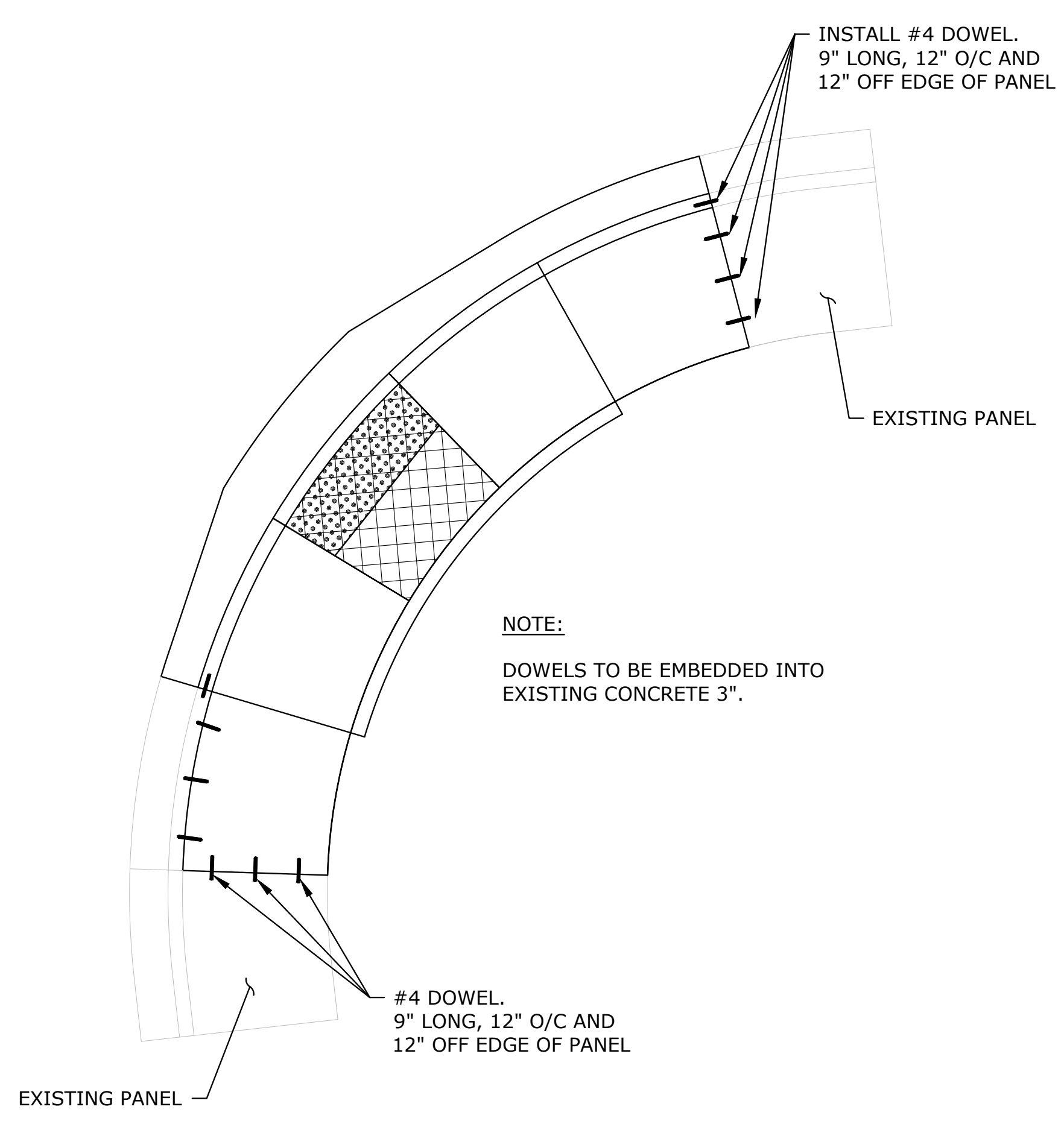
- NOTES:**
- SEE ODOT STANDARD DRAWINGS RD900 AND RD910-960 FOR SIDEWALK RAMP DETAILS AND RD700 FOR CURB DETAILS.
  - TOOLED JOINTS ARE REQUIRED AT ALL SIDEWALK RAMP SLOPE BREAK LINES.

**TYPICAL SIDEWALK RAMP REPLACEMENT SECTION**  
SCALE: NTS 1  
D-02



- NOTES:**
- ON STRAIGHT CURB SECTIONS, GUTTER FLANGE TAPERS SHALL BE 3' LONG, UNLESS OTHERWISE SHOWN.

**GUTTER AT CURB RAMP LANDING/THROAT**  
SCALE: NTS 2  
D-02



- NOTE:**
- DOWELS TO BE EMBEDDED INTO EXISTING CONCRETE 3".

**DOWELING DETAIL**  
SCALE: NTS 3  
D-02

NO.	DATE	BY	REVISION

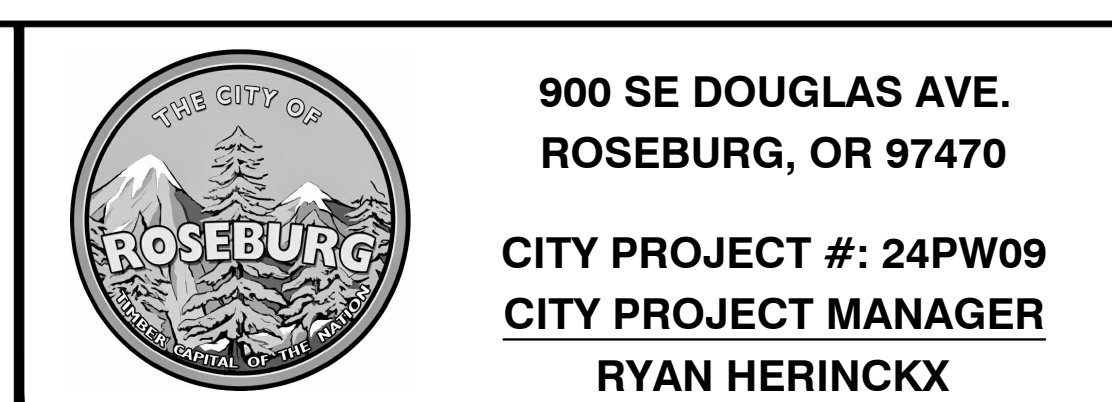
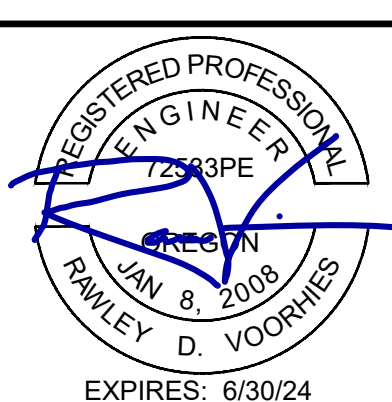
SCALE	
PLAN	HORIZ.
PROFILE	VERT.
ONE INCH (REF)	

DESIGNED:  
R. VOORHIES

DRAWN:  
A. FISCHER

CHECKED:  
R. VOORHIES

CWE PROJECT NO.  
40193.0XX.01



**DETAILS**

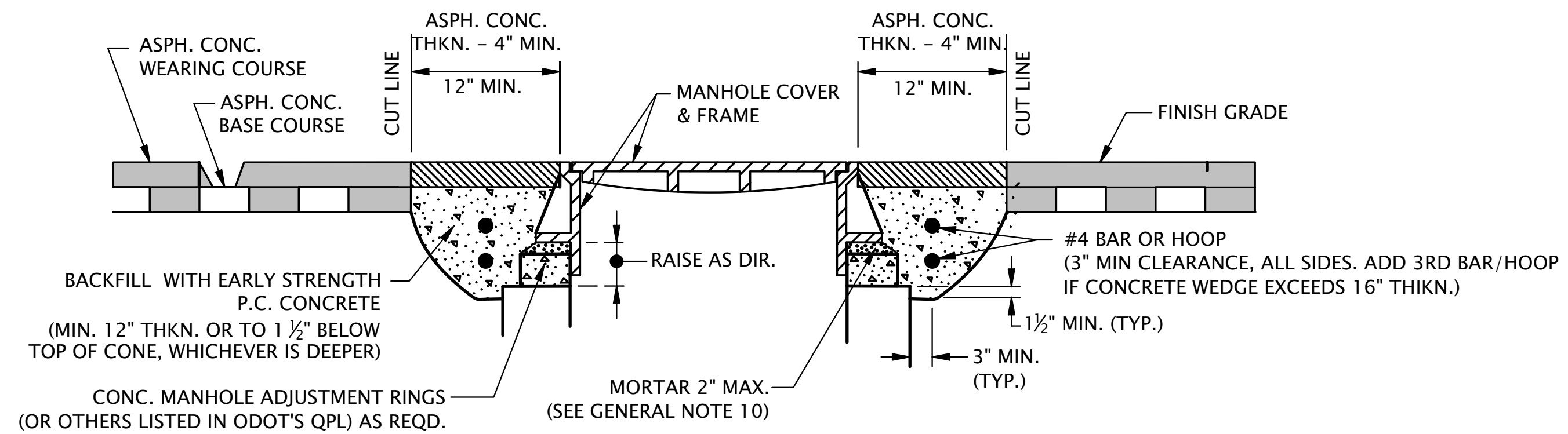
**2024 SE DOUGLAS AVENUE PAVEMENT REPAIRS**

**JUNE 2024**

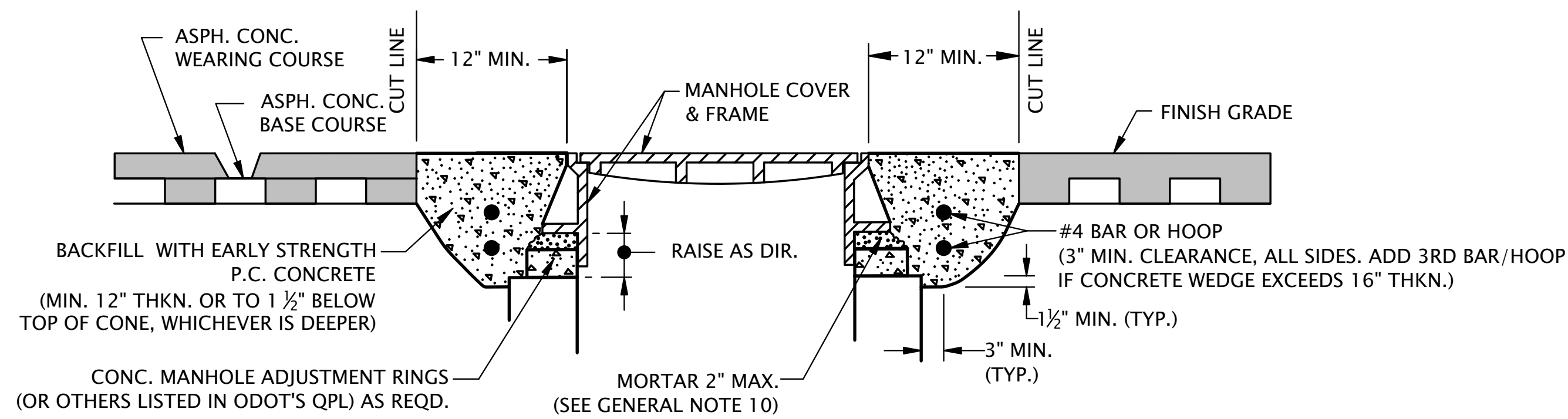
SHEET NO.  
**D-02**

**9 OF 10**

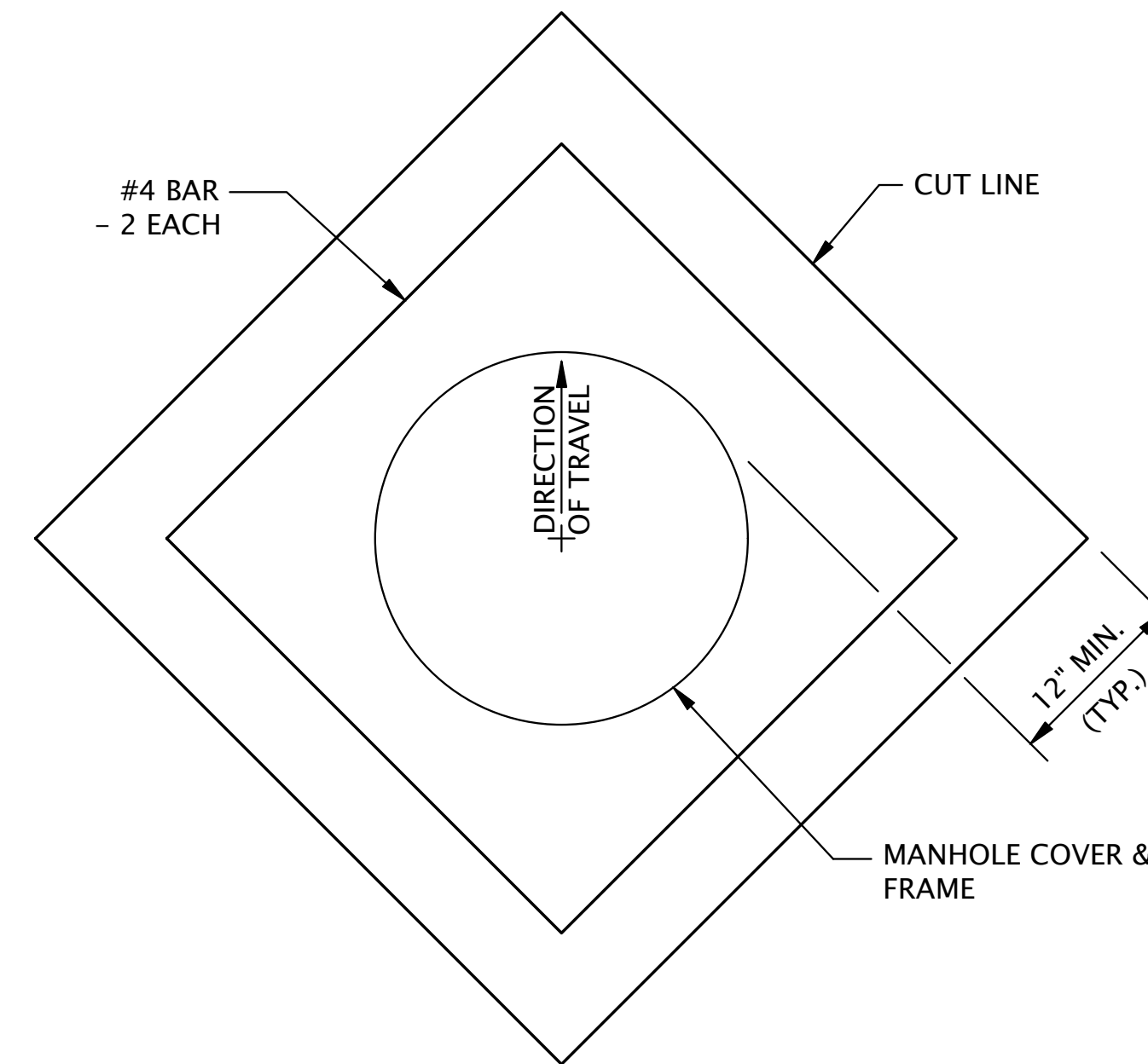
C:\Users\15093\OneDrive - Fischer Project Solutions\Projects\Roseburg\2024\Douglas Ave Pavement Repair\CAD\_WORKING\D-01 to D-03.dwg 6/18/2024 7:38 AM Anthony Fischer



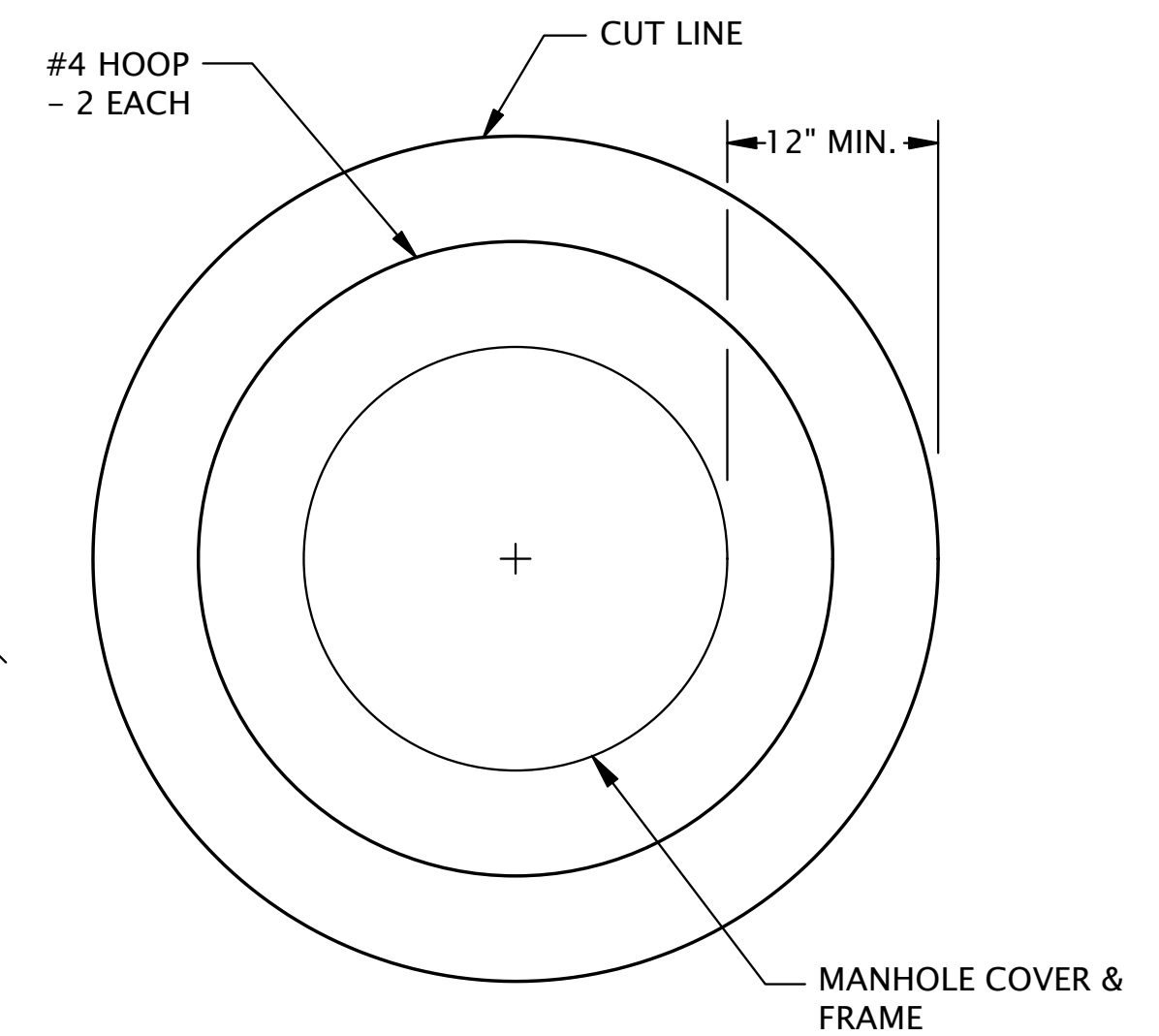
METHOD "A" - SQUARE OR CIRCULAR CUT



METHOD "B" - CIRCULAR CUT ONLY



PLAN SQUARE CUT



PLAN CIRCULAR CUT

MANHOLE FRAME ADJUSTMENT NOTES:

- COVER MANHOLE WITH BUILDING PAPER AND CONSTRUCT ASPHALT CONCRETE BASE COURSE AND WEARING COURSES.
- SAW CUT SQUARE OR CIRCULAR EXCAVATION AROUND MANHOLE 12" MIN. FROM MANHOLE FRAME.
- RAISE MANHOLE COVER AND FRAME TO FINISH GRADE BY INSTALLING CONCRETE MANHOLE ADJUSTMENT RINGS AND LEVELING MORTAR, AS SHOWN.
- BACKFILL WITH 5,000 PSI EARLY STRENGTH PORTLAND CEMENT CONCRETE. ALL CONCRETE SHALL BE COMMERCIAL GRADE CONCRETE.
- PROTECT FROM TRAFFIC LOADING UNTIL CONC. HAS CURED TO 3000 PSI.
- APPLY TACK COAT TO EDGES OF EXISTING PAVEMENT BEFORE INSTALLING PATCH.
- FINISH JOINT WITH ASPHALT SEAL AND SAND.
- SEE STD. DWG. RD336 FOR MANHOLE STEPS DETAILS.
- SEE APPROPRIATE MANHOLE STANDARD DRAWINGS FOR DETAILS NOT SHOWN.
- USE EPOXY FOR SYNTHETIC GRADE RINGS.
- SEE STD. DWG. RD336 FOR TRACER WIRE DETAILS.
- SEE STD. DWG. RD356 FOR MANHOLE COVERS AND FRAMES.

MANHOLE FRAME ADJUSTMENT  
SCALE: NTS

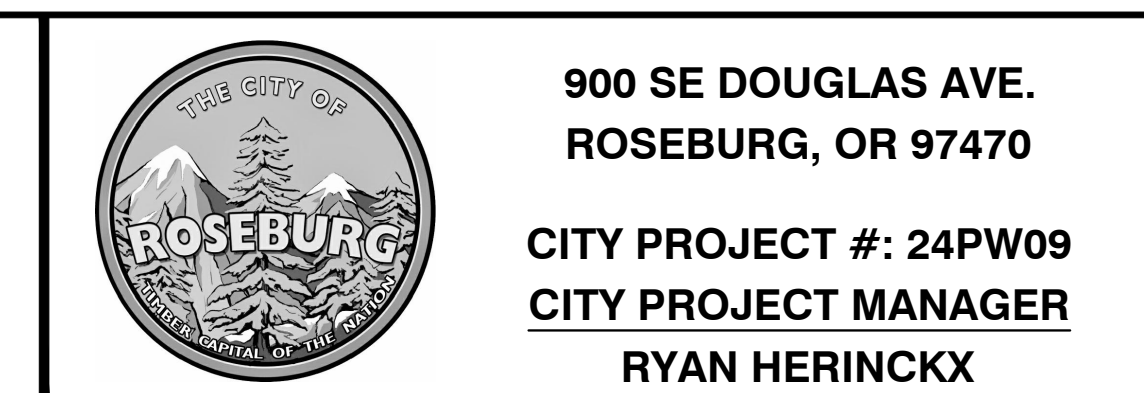
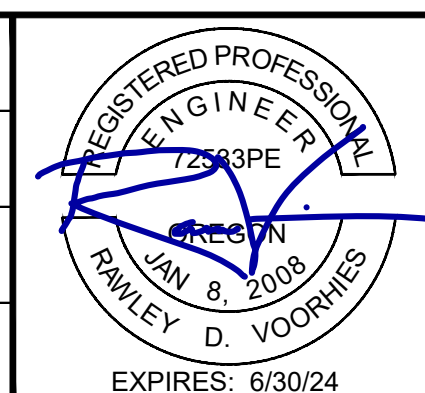
1  
D-03

C:\Users\15093\OneDrive - Fischer Project Solutions\Projects\Roseburg\2024\Douglas Ave Pavement Repair\CAD\WORKING\D-03.dwg, 6/18/2024 7:38 AM, Anthony Fischer

NO.	DATE	BY	REVISION

SCALE	
PLAN	HORIZ.
PROFILE	VERT.
ONE INCH (REF)	

DESIGNED:  
R. VOORHIES  
DRAWN:  
A. FISCHER  
CHECKED:  
R. VOORHIES  
CWE PROJECT NO.  
40193.0XX.01



DETAILS	
2024 SE DOUGLAS AVENUE PAVEMENT REPAIRS JUNE 2024	

SHEET NO.
D-03
10 OF 10